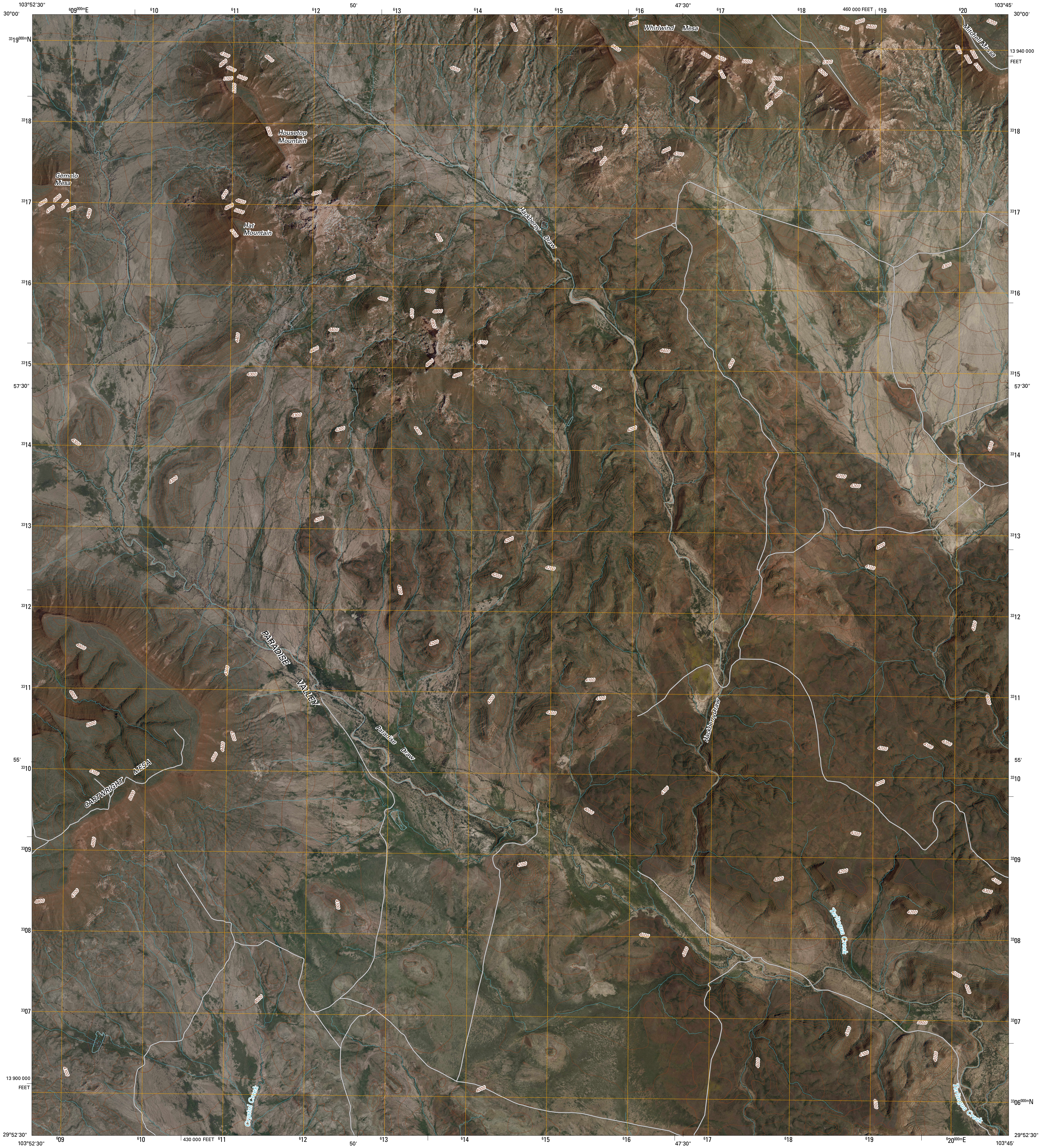




U.S. DEPARTMENT OF THE INTERIOR
U. S. GEOLOGICAL SURVEY

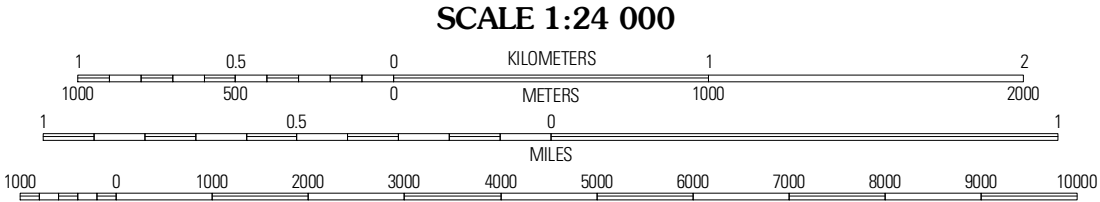
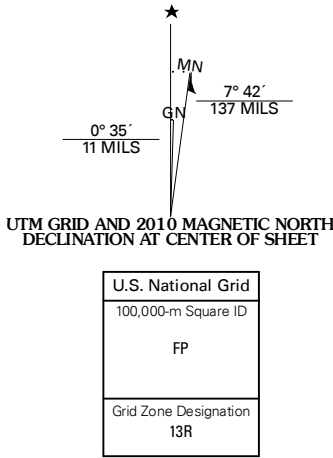


PARADISE DRAW QUADRANGLE
TEXAS
7.5-MINUTE SERIES



Produced by the United States Geological Survey
North American Datum of 1983 (NAD83)
World Geodetic System of 1984 (WGS84). Projection and
1 000-meter grid: Universal Transverse Mercator, Zone 13R
10 000-foot ticks: Texas Coordinate System of 1983
(south central zone)

Imagery.....NAP, September 2008
Roads.....US Census Bureau TIGER data
with limited USGS updates, 2006 - 2008
Names.....GNIS, 2008
Hydrography.....National Hydrography Dataset, 1995
Contours.....National Elevation Dataset, 2006



CONTOUR INTERVAL 20 FEET

This map was produced to conform with version 0.5.10 of the
draft USGS Standards for 7.5-Minute Quadrangle Maps.
A metadata file associated with this product is also draft version 0.5.10



QUADRANGLE LOCATION		
Devils Den	Cactus Flat	Goat Mountain
Jordan Gap	Paradise Draw	Duff Springs
Puerto Potrillo	McKinney Mountain	Stradling Mountain

ADJOINING 7.5' QUADRANGLES
TX 291 03-334

ROAD CLASSIFICATION	
Interstate Route	State Route
US Route	Local Road
Interstate Route	4WD
US Route	
State Route	

PARADISE DRAW, TX
2010