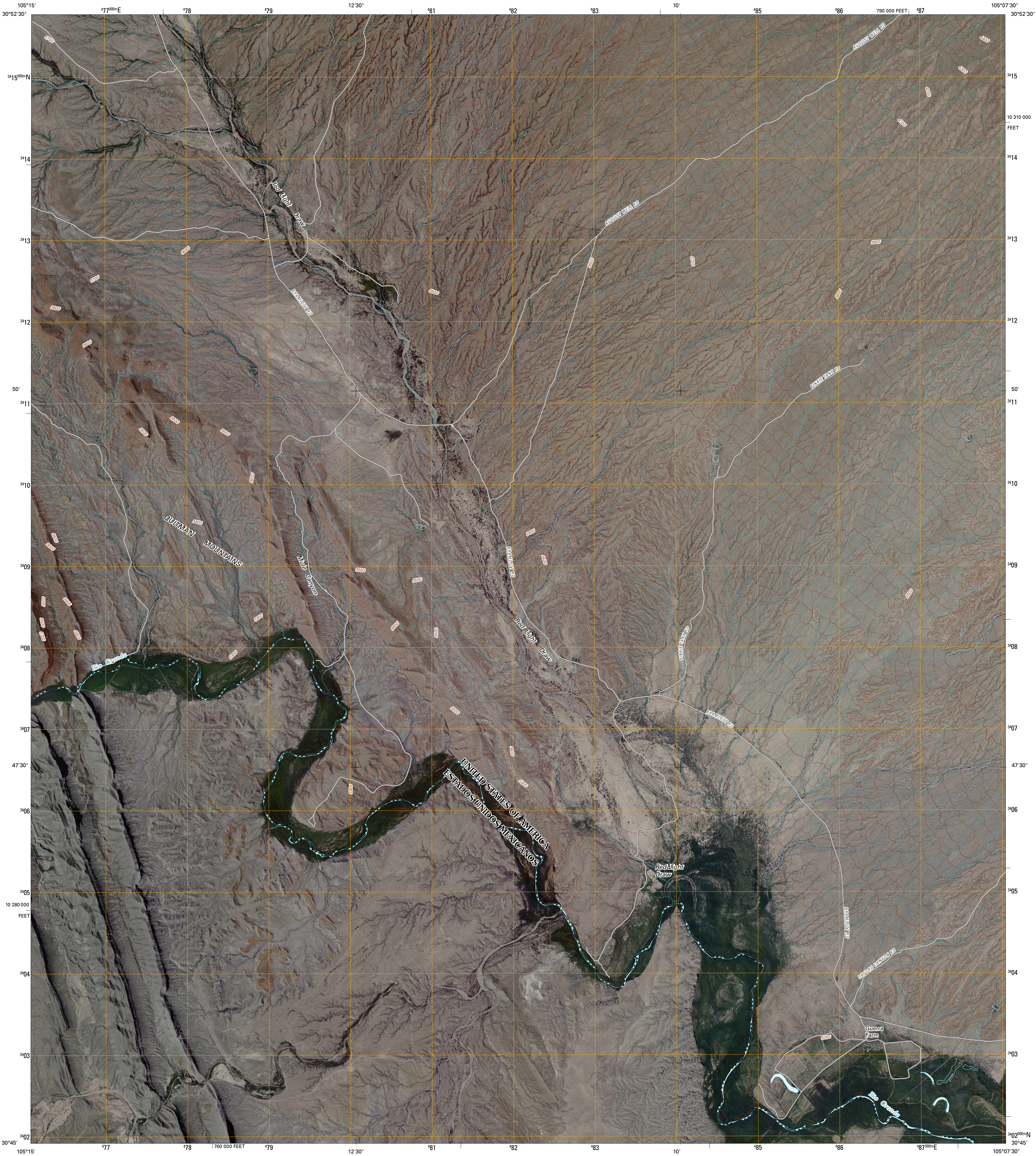




U.S. DEPARTMENT OF THE INTERIOR  
U. S. GEOLOGICAL SURVEY

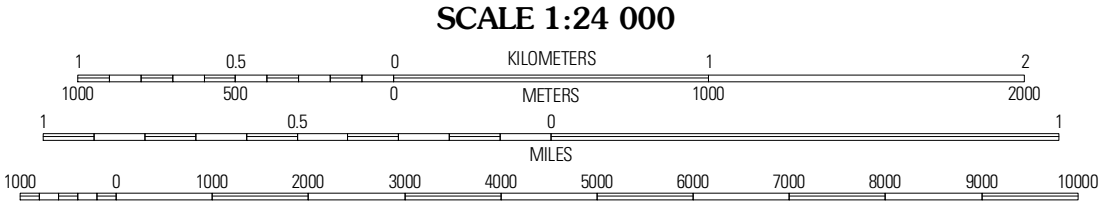
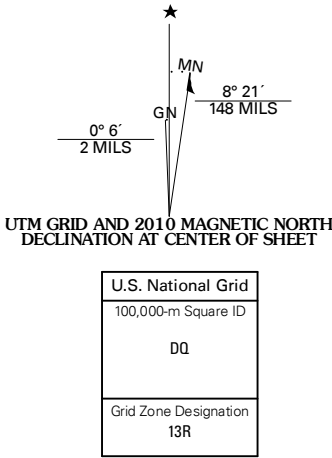


EAGLE MOUNTAINS SW QUADRANGLE  
TEXAS-CHIHUAHUA  
7.5-MINUTE SERIES



Produced by the United States Geological Survey  
North American Datum of 1983 (NAD83)  
World Geodetic System of 1984 (WGS84), Projection and  
1 000-meter grid; Universal Transverse Mercator, Zone 13R  
10 000-foot ticks; Texas Coordinate System of 1983  
(central zone)

Imagery.....NAIP, September 2008  
Roads.....US Census Bureau TIGER data  
with limited USGS updates, 2008  
Names.....GNIS, 2008  
Hydrography.....National Hydrography Dataset, 1995  
Contours.....National Elevation Dataset, 2005



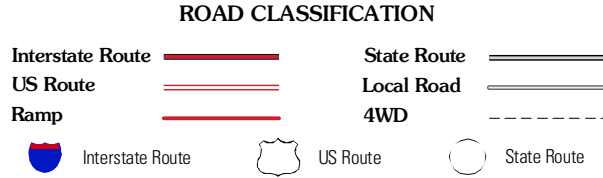
CONTOUR INTERVAL 20 FEET

This map was produced to conform with version 0.5.10 of the  
draft USGS Standards for 7.5-Minute Quadrangle Maps.  
A metadata file associated with this product is also draft version 0.5.10



QUADRANGLE LOCATION			
Cedar Arroyo	Eagle Mountains SW	Eagle Mountains NE	
Indian Hot Springs	Eagle Mountains SW	Eagle Mountains SE	
	Eagle Mountains SW	Brinkett Ranch	

ADJOINING 7.5' QUADRANGLES  
TX 30105-442



EAGLE MOUNTAINS SW, TX-CHH  
2010