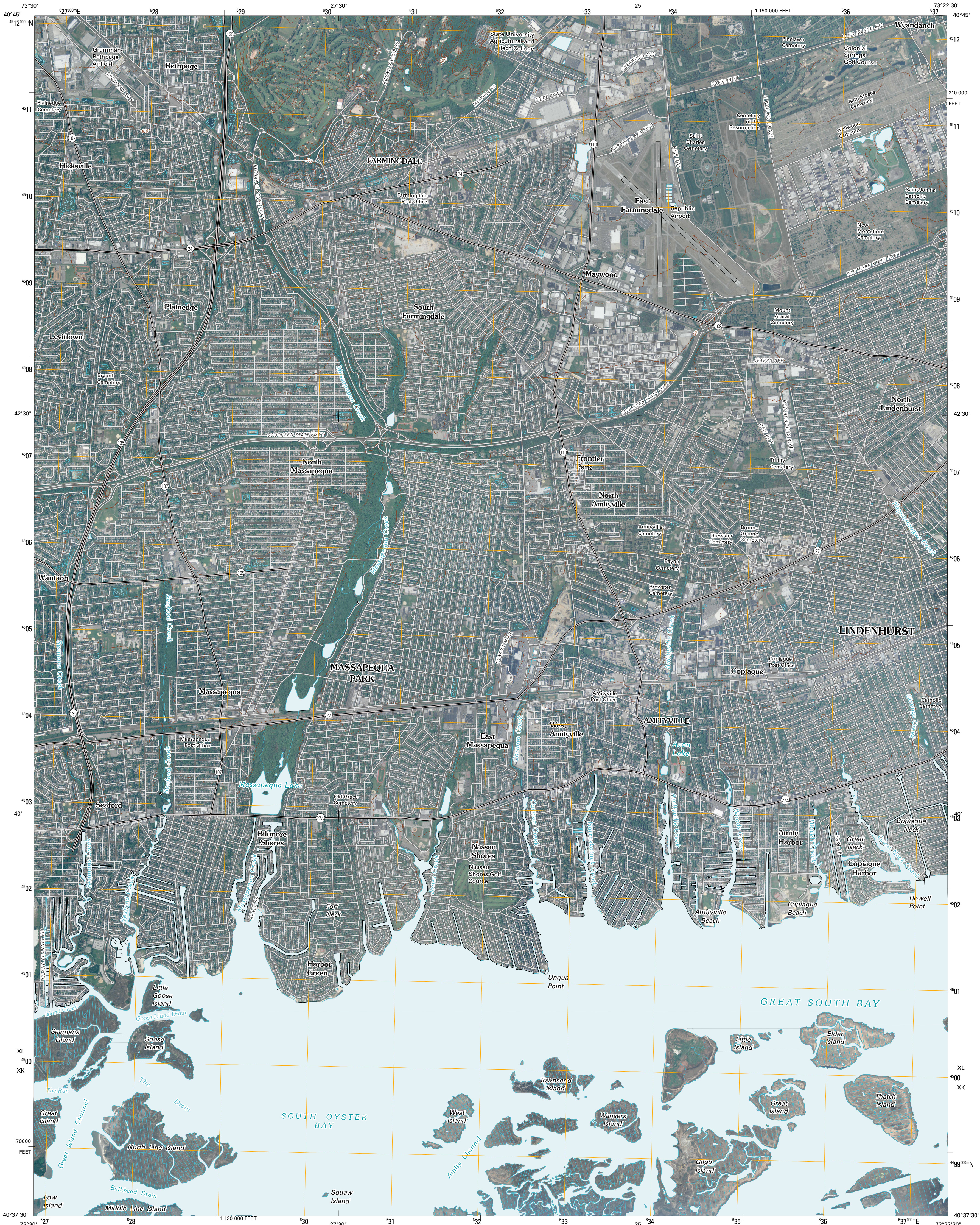




U.S. DEPARTMENT OF THE INTERIOR
U. S. GEOLOGICAL SURVEY



AMITYVILLE QUADRANGLE
NEW YORK
7.5-MINUTE SERIES



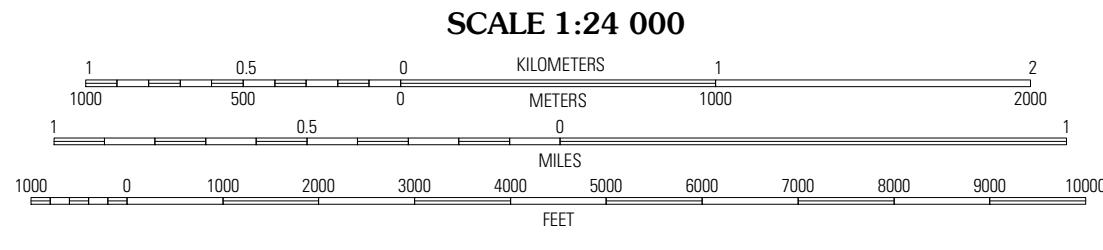
Produced by the United States Geological Survey
North American Datum of 1983 (NAD83)
World Geodetic System of 1984 (WGS84). Projection and
1 000-meter grid: Universal Transverse Mercator, Zone 18T
10 000-foot ticks: New York Coordinate System of 1983
(Long Island zone)

Imagery:.....NAP, May 2008
Roads:.....US Census Bureau TIGER data
with limited USGS updates, 2004
Names:.....GNIS, 2008
Hydrography:.....National Hydrography Dataset, 2008
Contours:.....National Elevation Dataset, 1998

UTM GRID AND 2010 MAGNETIC NORTH
DECLINATION AT CENTER OF SHEET

13° 21' 23" N
18 MILLS

U.S. National Grid
100,000-m Square ID
XL 08
XX 08
Grid Zone Designation
18T



SCALE 1:24 000

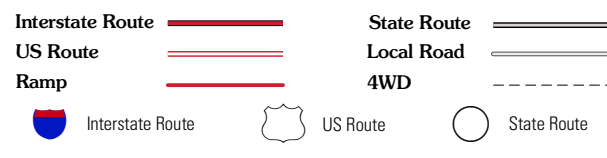
CONTOUR INTERVAL 10 FEET

This map was produced to conform with version 0.5.10 of the
draft USGS Standards for 7.5-Minute Quadrangle Maps.
A metadata file associated with this product is also draft version 0.5.10



QUADRANGLE LOCATION		
Hicksville	Huntington	Greenlawn
Freeport	Amityville	Bay Shore West
Jones Inlet	West Calico Beach	Bay Shore West OE S

ROAD CLASSIFICATION



AMITYVILLE, NY
2010