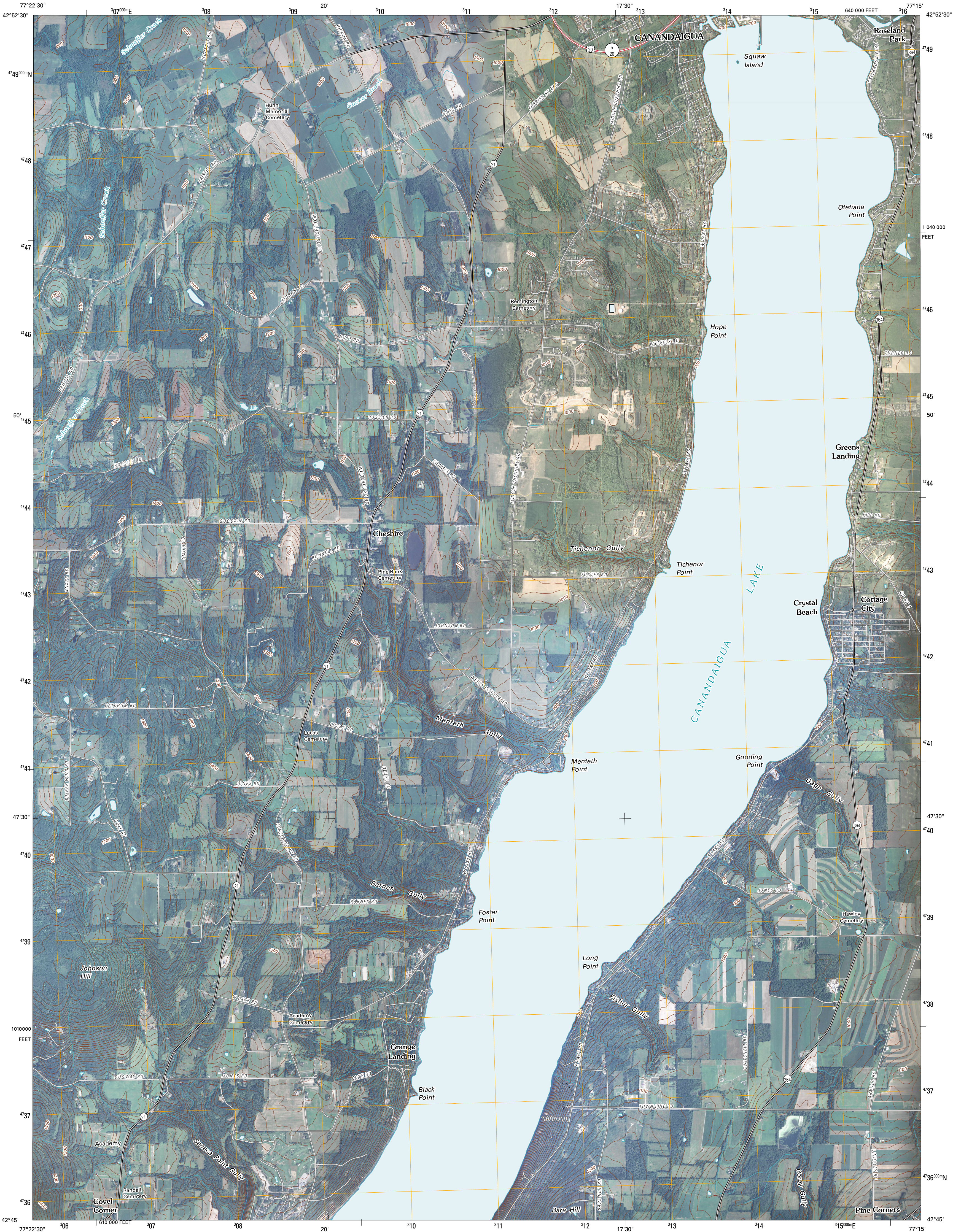




U.S. DEPARTMENT OF THE INTERIOR  
U. S. GEOLOGICAL SURVEY



CANANDAIGUA LAKE QUADRANGLE  
NEW YORK  
7.5-MINUTE SERIES



Produced by the United States Geological Survey  
North American Datum of 1983 (NAD83)  
World Geodetic System of 1984 (WGS84). Projection and  
1 000-meter grid: Universal Transverse Mercator, Zone 18T  
10 000-foot ticks: New York Coordinate System of 1983  
(central zone)

Imagery:.....NAIP, May 2008 - August 2008  
Roads:.....US Census Bureau TIGER data  
with limited USGS updates, 2008  
Names:.....National Hydrography Dataset, 2008  
Hydrography:.....National Hydrography Dataset, 2008  
Contours:.....National Elevation Dataset, 1998

UTM GRID AND 2010 MAGNETIC NORTH  
DECLINATION AT CENTER OF SHEET

U.S. National Grid  
100 000-m Square ID  
UN  
Grid Zone Designation  
18T

SCALE 1:24 000

1 000 0 500 0 500 1000 2000  
KILOMETERS  
1 000 0 500 0 500 1000 2000  
METERS  
1 000 0 1000 2000 3000 4000 5000 6000 7000 8000 9000 10000  
FEET

CONTOUR INTERVAL 20 FEET



QUADRANGLE LOCATION			
Victor	Canandaigua	Clifton Springs	
Bristol Center	Canandaigua Lake	Rushville	
Bristol Springs	Middlesex	Potter	

ROAD CLASSIFICATION

Interstate Route  
US Route  
Ramp

State Route  
Local Road  
4WD

CANANDAIGUA LAKE, NY  
2010