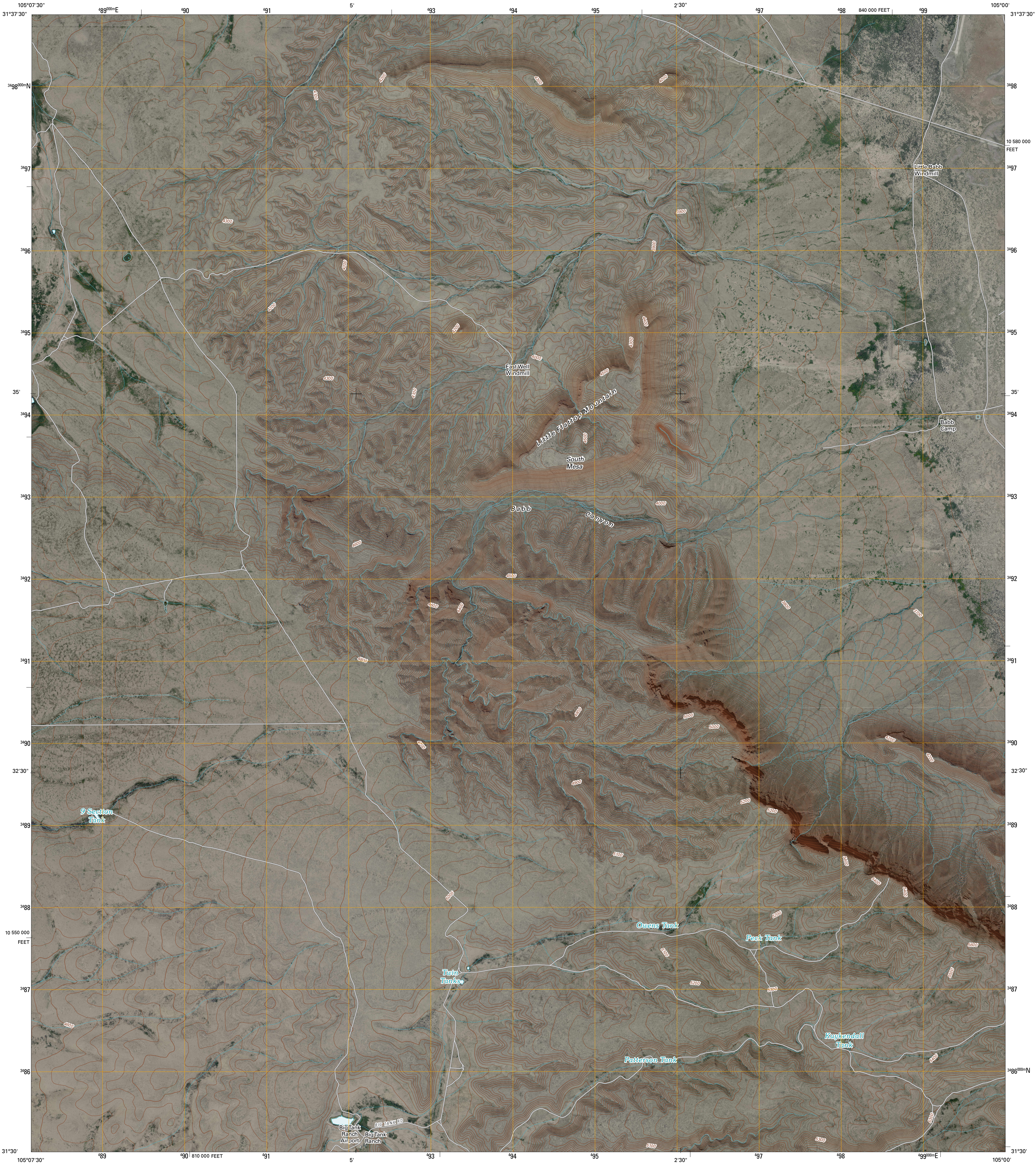




U.S. DEPARTMENT OF THE INTERIOR  
U. S. GEOLOGICAL SURVEY

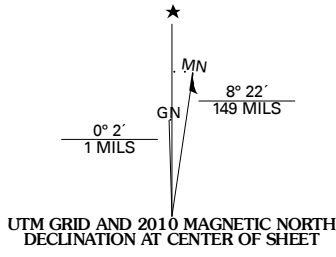


BABB CANYON QUADRANGLE  
TEXAS  
7.5-MINUTE SERIES

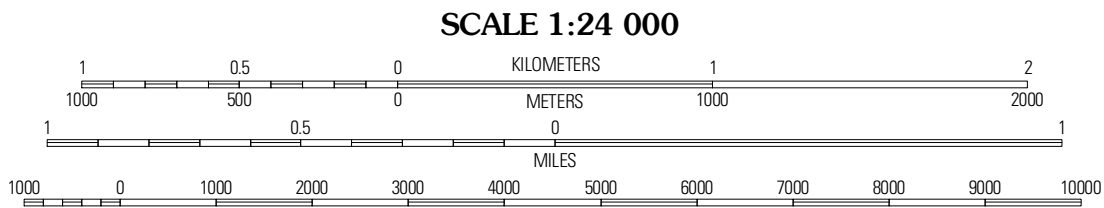


Produced by the United States Geological Survey  
North American Datum of 1983 (NAD83)  
World Geodetic System of 1984 (WGS84). Projection and  
1 000-meter grid: Universal Transverse Mercator, Zone 13R  
10 000-foot ticks: Texas Coordinate System of 1983  
(central zone)

Imagery.....NAIP, September 2008  
Roads.....US Census Bureau TIGER data  
with limited USGS updates, 2008  
Names.....GNIS, 2008  
Hydrography.....National Hydrography Dataset, 1995  
Contours.....National Elevation Dataset, 2005



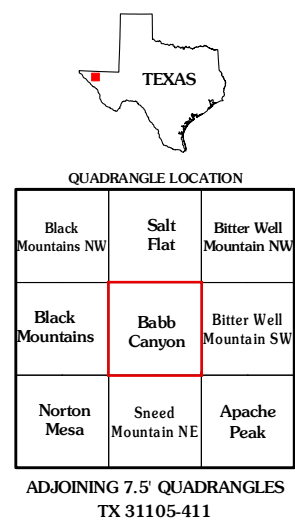
U.S. National Grid
100,000-m Square ID
DQ
Grid Zone Designation
13R



SCALE 1:24 000

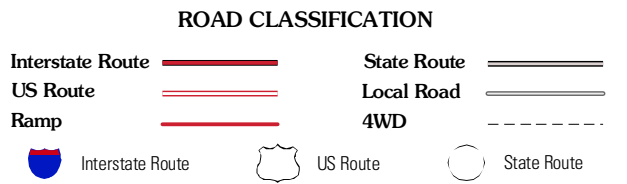
CONTOUR INTERVAL 20 FEET

This map was produced to conform with version 0.5.10 of the  
draft USGS Standards for 7.5-Minute Quadrangle Maps.  
A metadata file associated with this product is also draft version 0.5.10



QUADRANGLE LOCATION		
Black Mountain NW	Salt Flat	Bitter Well Mountain NW
Black Mountains	Babb Canyon	Bitter Well Mountain SW
Norton Mesa	Sneed Mountain NE	Apache Peak

ADJOINING 7.5 QUADRANGLES  
TX 31105-411



BABB CANYON, TX  
2010