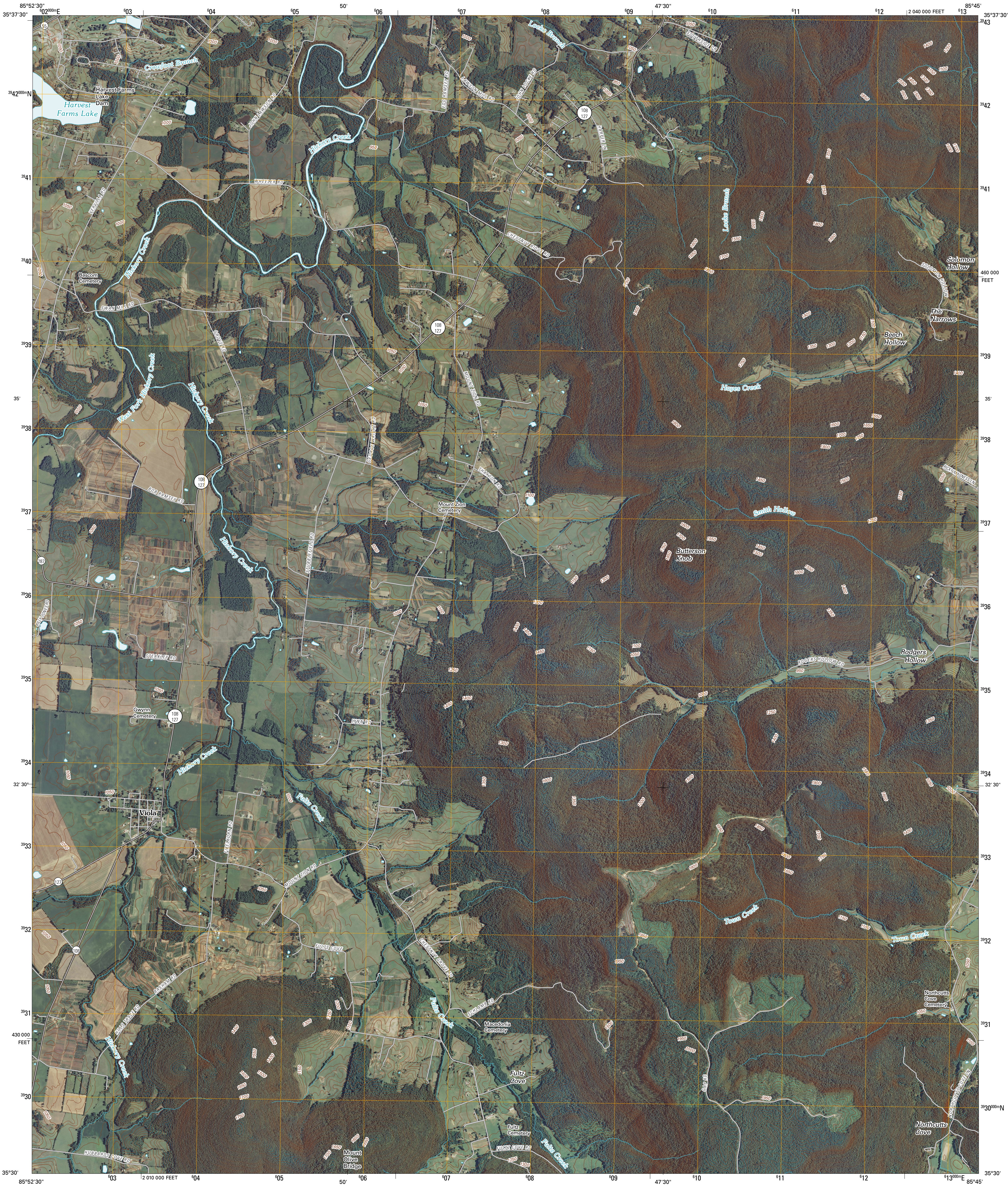




U.S. DEPARTMENT OF THE INTERIOR
U. S. GEOLOGICAL SURVEY

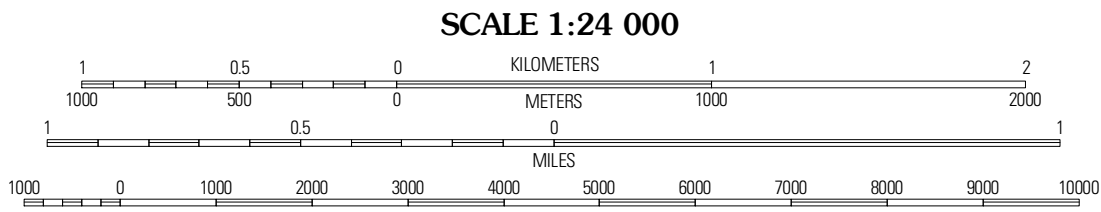
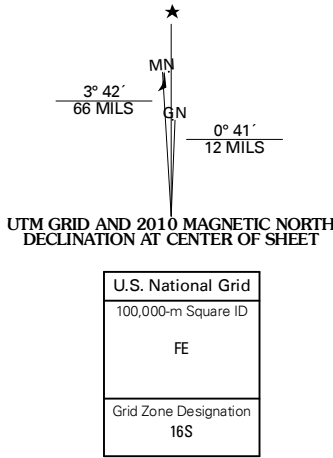


VIOLA QUADRANGLE
TENNESSEE
7.5-MINUTE SERIES



Produced by the United States Geological Survey
North American Datum of 1983 (NAD83)
World Geodetic System of 1984 (WGS84), Projection and
1 000-meter grid: Universal Transverse Mercator, Zone 16S
10 000-foot ticks: Tennessee Coordinate System of 1983

Imagery.....NAIP, July 2008
Roads.....US Census Bureau TIGER data
with limited USGS updates, 2008
Names.....GNIS, 2008
Hydrography.....National Hydrography Dataset, 2008
Contours.....National Elevation Dataset, 2001



CONTOUR INTERVAL 10 FEET

This map was produced to conform with version 0.5.10 of the
draft USGS Standards for 7.5-Minute Quadrangle Maps.
A metadata file associated with this product is also draft version 0.5.10



QUADRANGLE LOCATION		
Centertown	McMinnville	Cardwell Mountain
Morrison	Viola	Living College
Hillsboro	Cane Hollow	Altamont

ADJOINING 7.5' QUADRANGLES

ROAD CLASSIFICATION		
Interstate Route	State Route	Local Road
US Route	4WD	
Ramp		

VIOLA, TN
2010