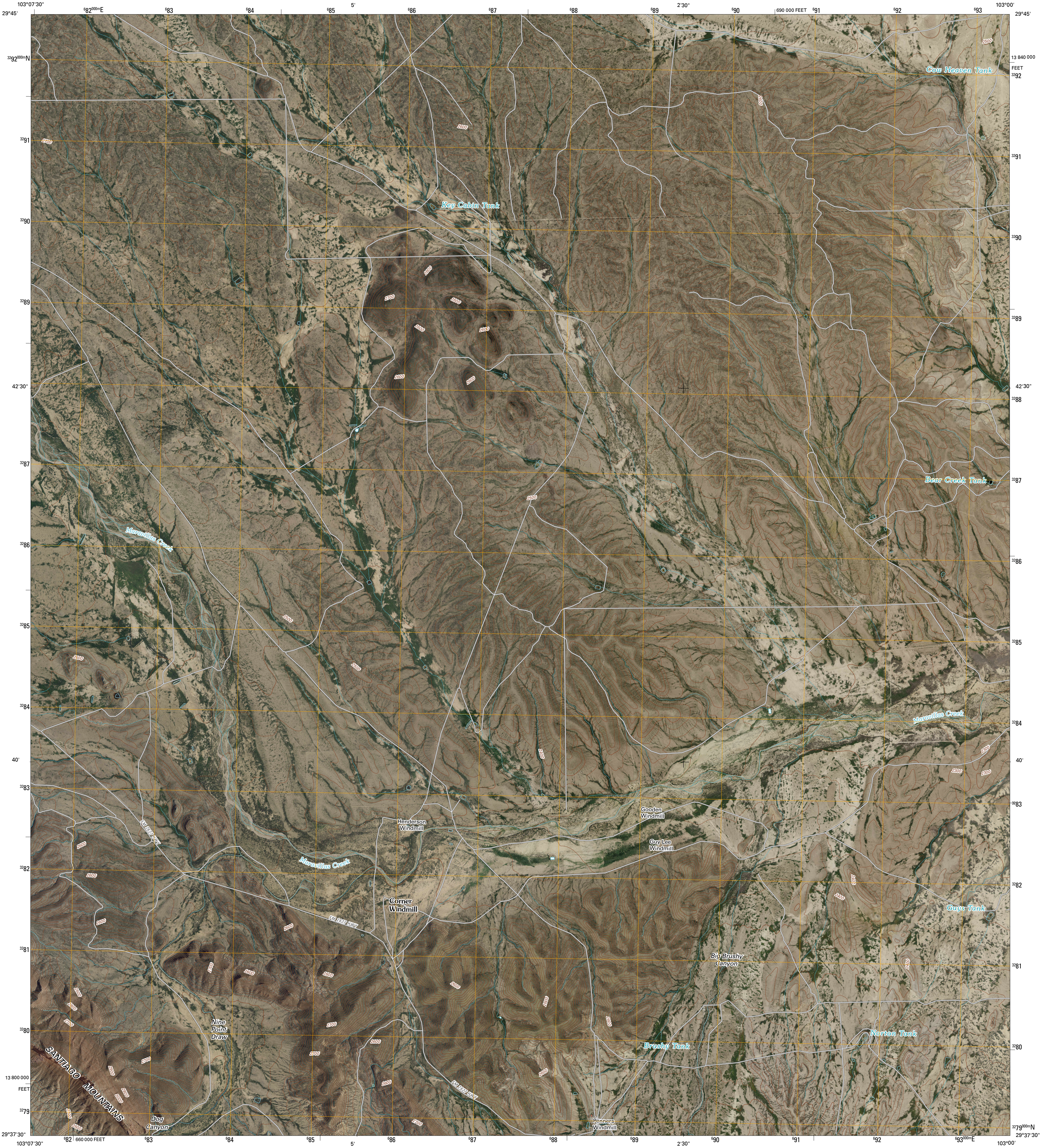




U.S. DEPARTMENT OF THE INTERIOR
U. S. GEOLOGICAL SURVEY

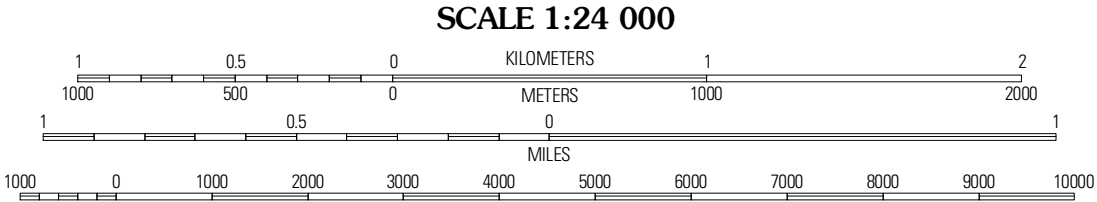
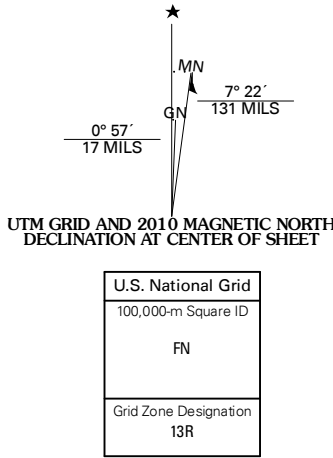


BONE SPRING NE QUADRANGLE
TEXAS
7.5-MINUTE SERIES



Produced by the United States Geological Survey
North American Datum of 1983 (NAD83)
World Geodetic System of 1984 (WGS84). Projection and
1 000-meter grid: Universal Transverse Mercator, Zone 13R
10 000-foot ticks: Texas Coordinate System of 1983
(south central zone)

Imagery.....NAP, September 2008
Roads.....US Census Bureau TIGER data
with limited USGS updates, 2006
Names.....GNIS, 2008
Hydrography.....National Hydrography Dataset, 1995
Contours.....National Elevation Dataset, 2006



CONTOUR INTERVAL 20 FEET

This map was produced to conform with version 0.5.10 of the
draft USGS Standards for 7.5-Minute Quadrangle Maps.
A metadata file associated with this product is also draft version 0.5.10



QUADRANGLE LOCATION			
Sosa Peak	Hood Spring SE	Yellow House Peak	
Permian Gap	Bone Spring NE	Siltwell Mountain	
Bone Spring	Dugger Flat	Black Gap	

ADJOINING 7.5 QUADRANGLES
TX 29103-414

ROAD CLASSIFICATION			
Interstate Route	State Route	Local Road	4WD
US Route			
Ramp			

BONE SPRING NE, TX
2010