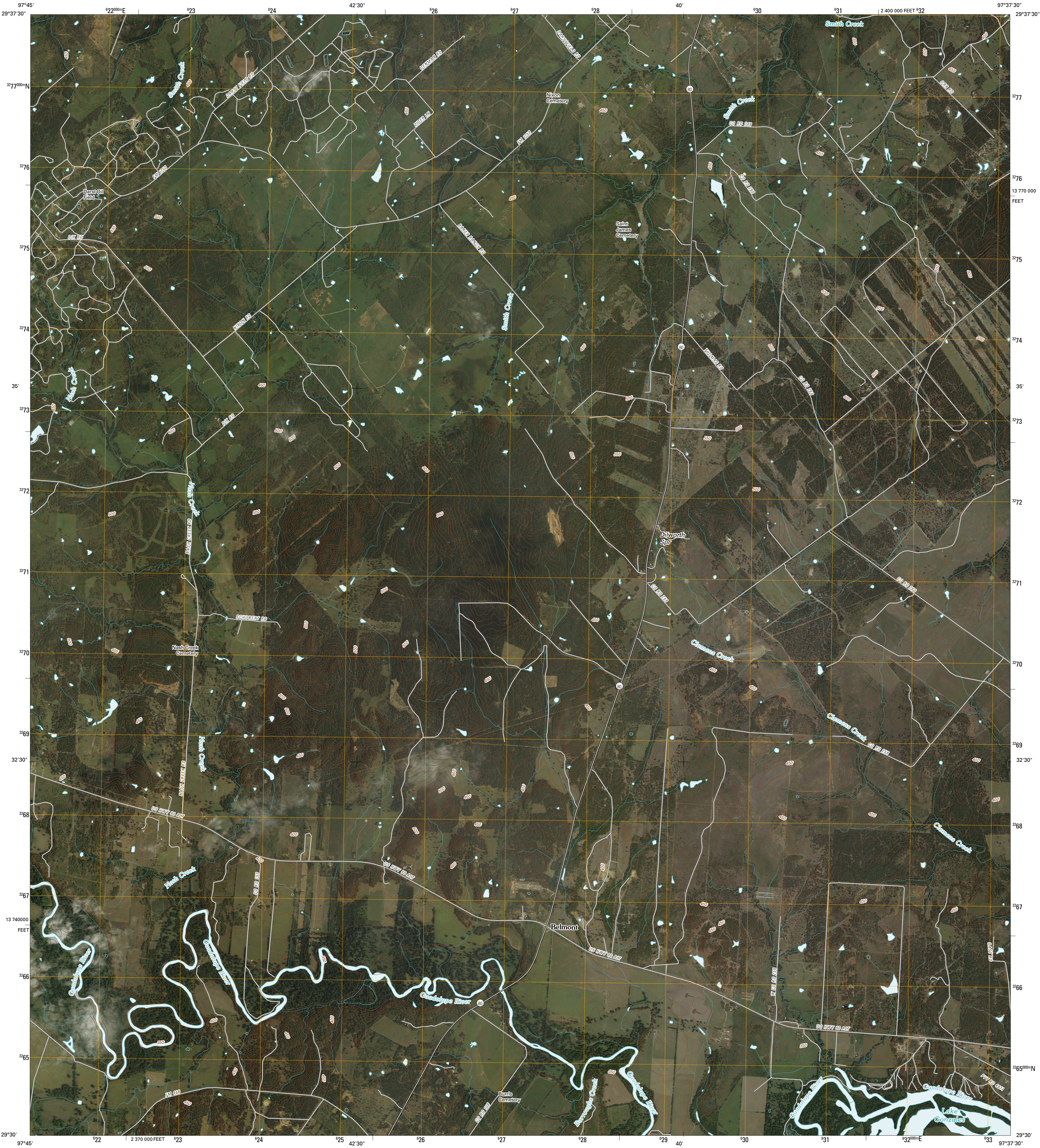




U.S. DEPARTMENT OF THE INTERIOR
U. S. GEOLOGICAL SURVEY

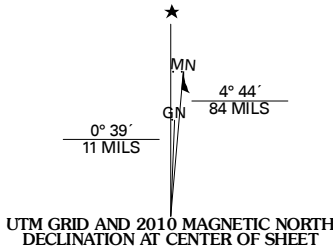


BELMONT QUADRANGLE
TEXAS
7.5-MINUTE SERIES

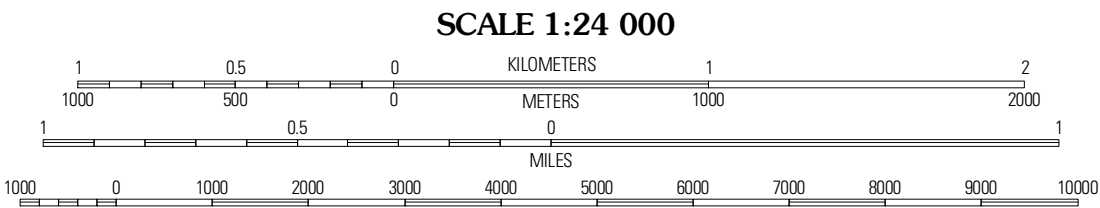


Produced by the United States Geological Survey
North American Datum of 1983 (NAD83)
World Geodetic System of 1984 (WGS84) Projection and
1 000-meter grid; Universal Transverse Mercator, Zone 14R
10 000-foot ticks; Texas Coordinate System of 1983
(south central zone)

Imagery.....NAIP, September 2008
Roads.....US Census Bureau TIGER data
with limited USGS updates, 2004 - 2006
Names.....GNIS, 2008
Hydrography.....National Hydrography Dataset, 1995
Contours.....National Elevation Dataset, 2004



| |
|-----------------------|
| U.S. National Grid |
| 100,000-m Square ID |
| PT |
| Grid Zone Designation |
| 14R |



SCALE 1:24 000

CONTOUR INTERVAL 10 FEET

This map was produced to conform with version 0.5.10 of the
draft USGS Standards for 7.5-Minute Quadrangle Maps.
A metadata file associated with this product is also draft version 0.5.10



| QUADRANGLE LOCATION | | |
|---------------------|-----------|---------|
| Kingsbury | Luling | Harwood |
| Dart Creek | Belmont | Ottine |
| Deleville | Leesville | Cost |

ADJOINING 7.5' QUADRANGLES
TX 2997-312

| ROAD CLASSIFICATION | | | |
|---------------------|-------------|-------------|-----|
| Interstate Route | State Route | Local Road | 4WD |
| US Route | | | |
| Ramp | | | |
| Interstate Route | US Route | State Route | |

BELMONT, TX
2010