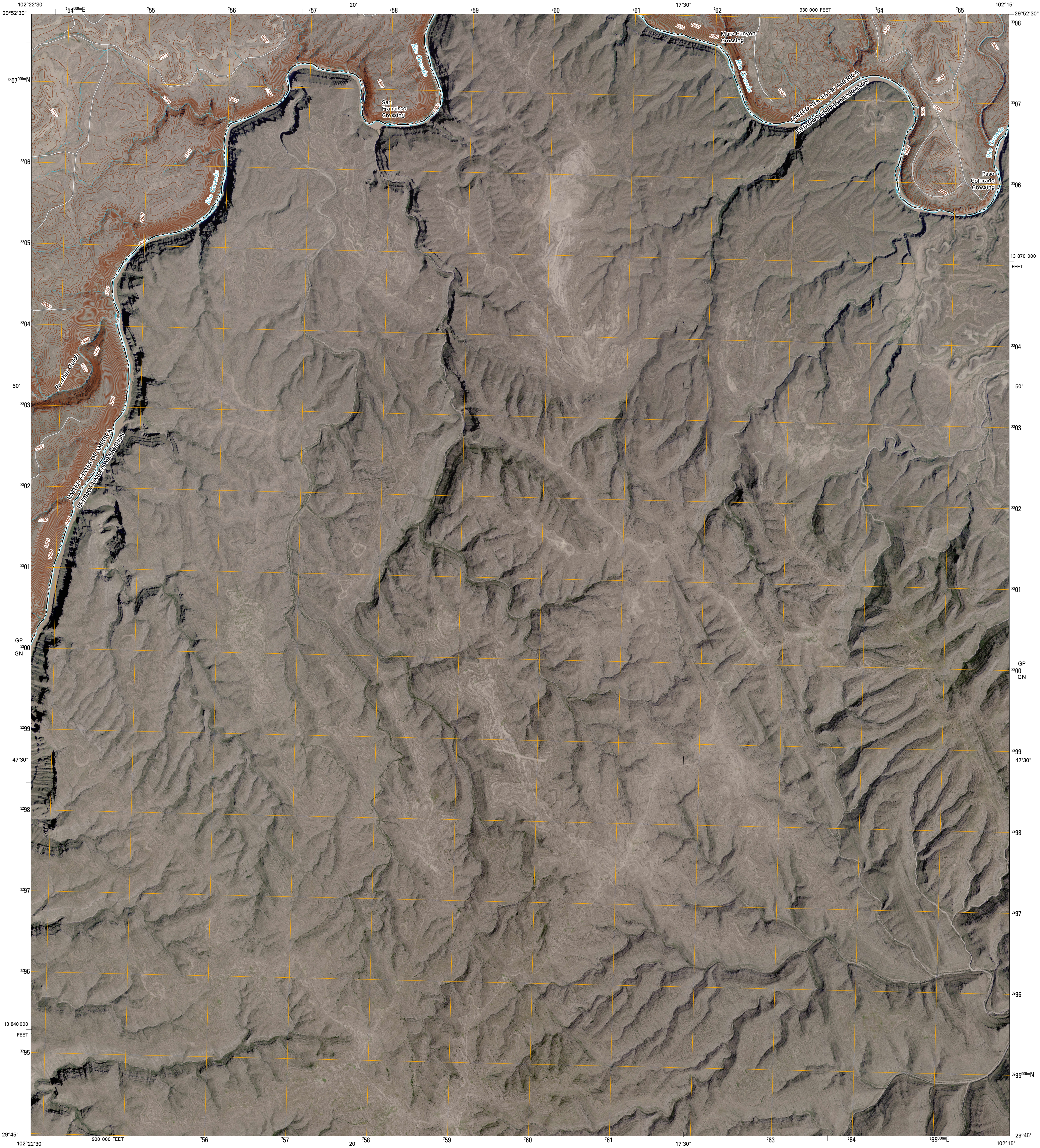




U.S. DEPARTMENT OF THE INTERIOR
U. S. GEOLOGICAL SURVEY

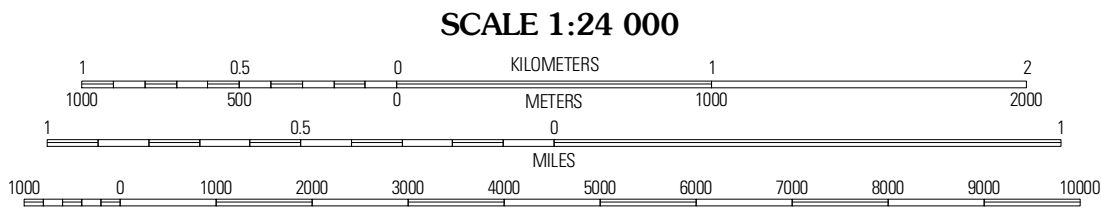
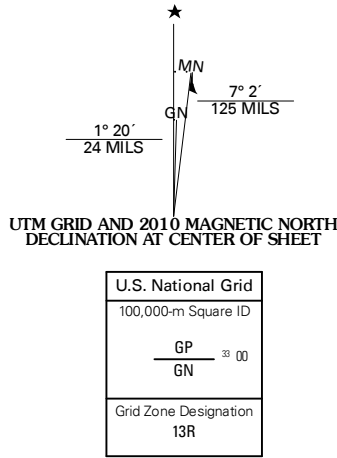


PANTHER GULCH EAST QUADRANGLE
TEXAS-COAHUILA DE ZARAGOZA
7.5-MINUTE SERIES



Produced by the United States Geological Survey
North American Datum of 1983 (NAD83)
World Geodetic System of 1984 (WGS84). Projection and
1 000-meter grid: Universal Transverse Mercator, Zone 13R
10 000-foot ticks: Texas Coordinate System of 1983
(south central zone)

Imagery.....NAP, September 2008
Roads.....with limited USGS updates, 2006 - 2008
Names.....GNIS, 2008
Hydrography.....National Hydrography Dataset, 1995
Contours.....National Elevation Dataset, 2006



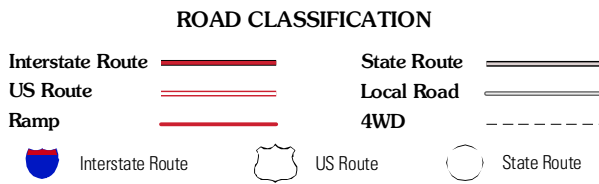
CONTOUR INTERVAL 40 FEET

This map was produced to conform with version 0.5.10 of the
draft USGS Standards for 7.5-Minute Quadrangle Maps.
A metadata file associated with this product is also draft version 0.5.10



QUADRANGLE LOCATION		
Candilla Canyon West	Candilla Canyon East	McClain Canyon
Panther Gulch West	Panther Gulch East	Taylor Canyon

ADJOINING 7.5' QUADRANGLES
TX 29102-431



PANTHER GULCH EAST, TX-COA
2010