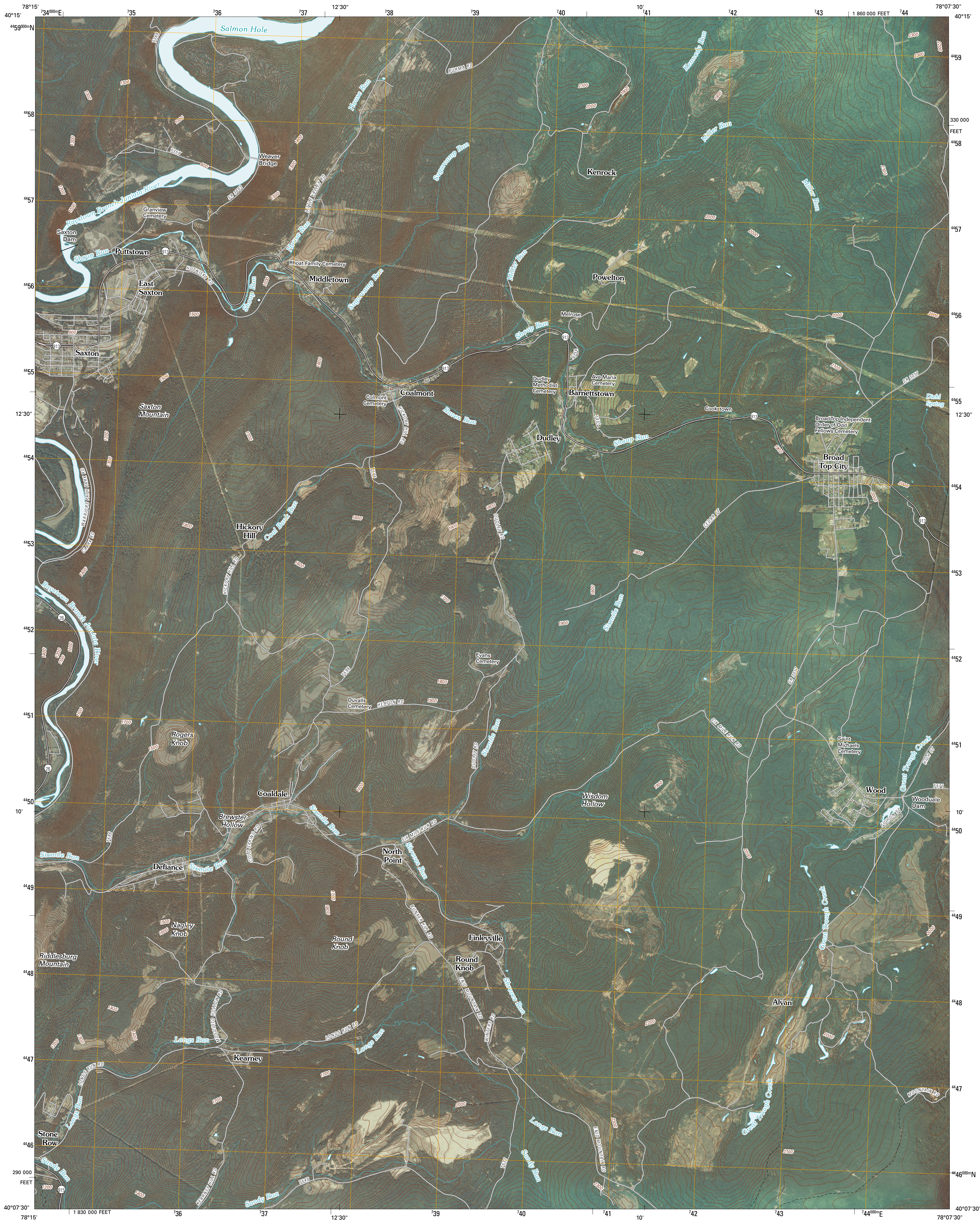




U.S. DEPARTMENT OF THE INTERIOR
U. S. GEOLOGICAL SURVEY

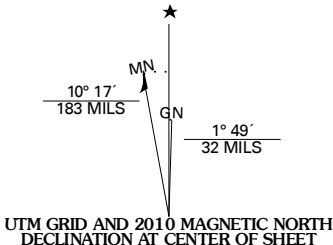


SAXTON QUADRANGLE
PENNSYLVANIA
7.5-MINUTE SERIES

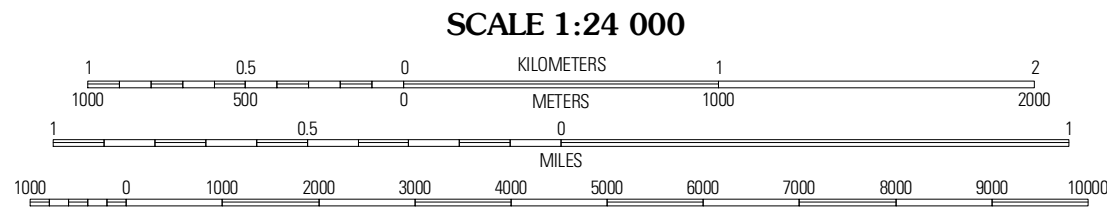


Produced by the United States Geological Survey
North American Datum of 1983 (NAD83)
World Geodetic System of 1984 (WGS84). Projection and
1 000-meter grid: Universal Transverse Mercator, Zone 17T
10 000-foot ticks: Pennsylvania Coordinate System of 1983
(south zone)

Imagery.....NAP, August 2008
Roads.....©2006-2010 Tele Atlas
Names.....GNIS, 2008
Hydrography.....National Hydrography Dataset, 2008
Contours.....National Elevation Dataset, 2000

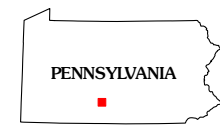


| |
|-----------------------|
| U.S. National Grid |
| 100,000-m Square ID |
| 0E |
| Grid Zone Designation |
| 17T |



CONTOUR INTERVAL 20 FEET
NORTH AMERICAN VERTICAL DATUM OF 1988

This map was produced to conform with version 0.5.10 of the
draft USGS Standards for 7.5-Minute Quadrangle Maps.
A metadata file associated with this product is draft version 0.5.11



| QUADRANGLE LOCATION | | |
|---------------------|---------------|------------|
| Martinsburg | Entriken | Cassville |
| Hopewell | Saxton | Saltillo |
| Everett East | Wells Tannery | Hustontown |

ADJOINING 7.5 QUADRANGLES

| ROAD CLASSIFICATION | |
|---------------------|-------------|
| Interstate Route | State Route |
| US Route | Local Road |
| Ramp | 4WD |

Interstate Route US Route State Route

SAXTON, PA
2010