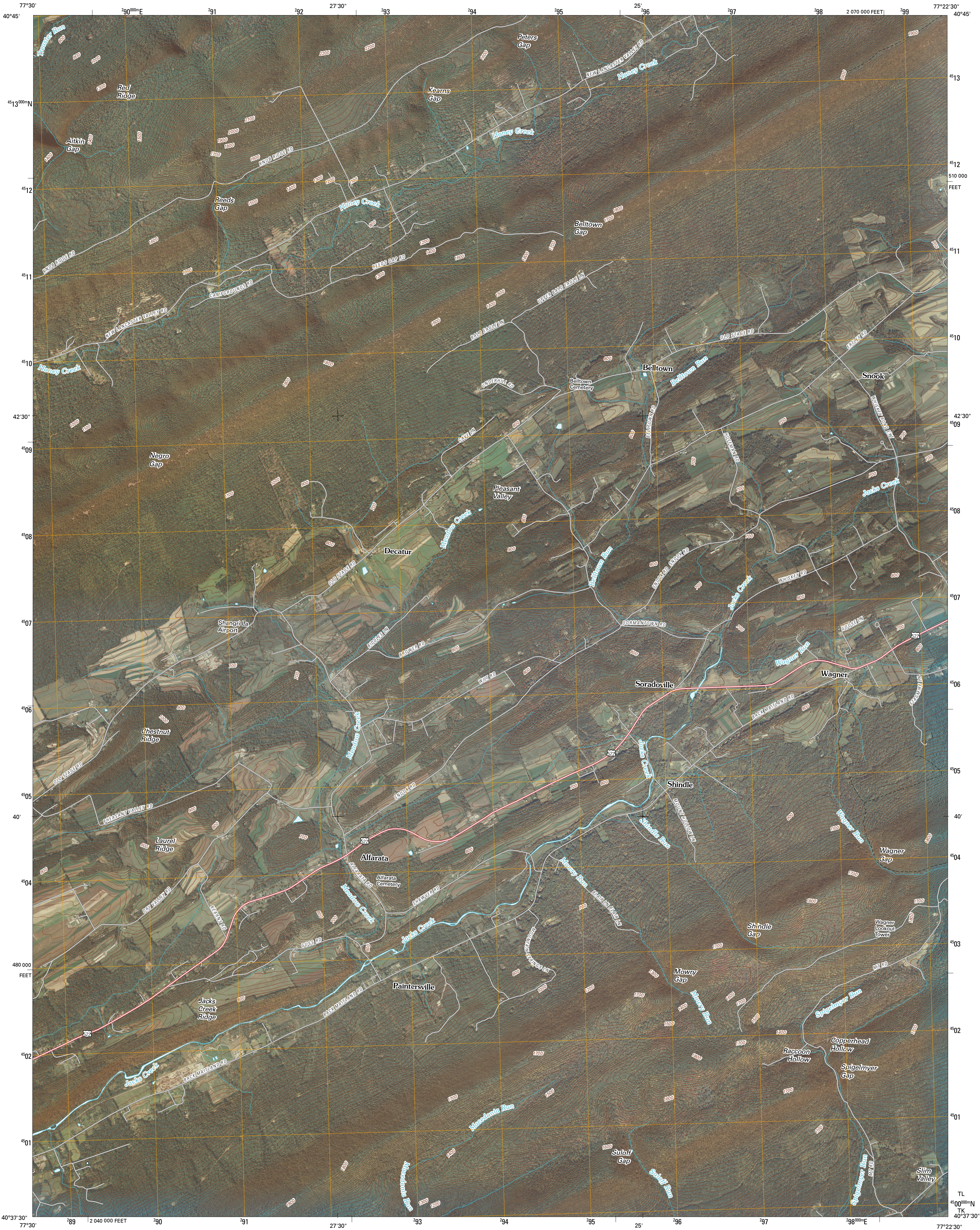




U.S. DEPARTMENT OF THE INTERIOR
U. S. GEOLOGICAL SURVEY



ALFARATA QUADRANGLE
PENNSYLVANIA
7.5-MINUTE SERIES



Produced by the United States Geological Survey
North American Datum of 1983 (NAD83)
World Geodetic System of 1984 (WGS84). Projection and
1 000-meter grid; Universal Transverse Mercator, Zone 18T
10 000-foot ticks; Pennsylvania Coordinate System of 1983
(south zone)

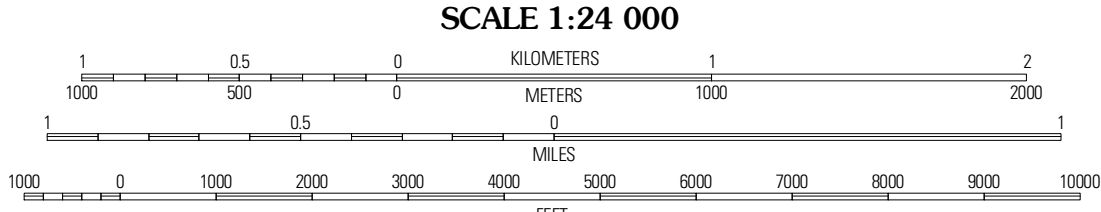
Imagery:.....NAP, October 2008
Roads:.....©2006-2010 Tele Atlas
Names:.....GNS, 2008
Hydrography:.....National Hydrography Dataset, 2008
Contours:.....National Elevation Dataset, 2000

UTM GRID AND 2010 MAGNETIC NORTH
DECLINATION AT CENTER OF SHEET

10° 56' 184 MILS
1° 35' 28 MILS

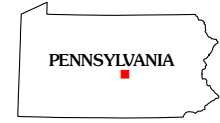
MN
GN

U.S. National Grid
100,000m Square ID
TL
TK
Grid Zone Designation
18T



CONTOUR INTERVAL 20 FEET
NORTH AMERICAN VERTICAL DATUM OF 1988

This map was produced to conform with version 0.5.10 of the
draft USGS Standards for 7.5-Minute Quadrangle Maps.
A metadata file associated with this product is draft version 0.5.11



QUADRANGLE LOCATION		
Spring Mills	Colum	Wellert
Burnham	Alfarata	McClure
Lewistown	Millintown	Mexico

ADJOINING 7.5 QUADRANGLES

ROAD CLASSIFICATION

Interstate Route
US Route
Ramp

State Route
Local Road
4WD

ALFARATA, PA
2010