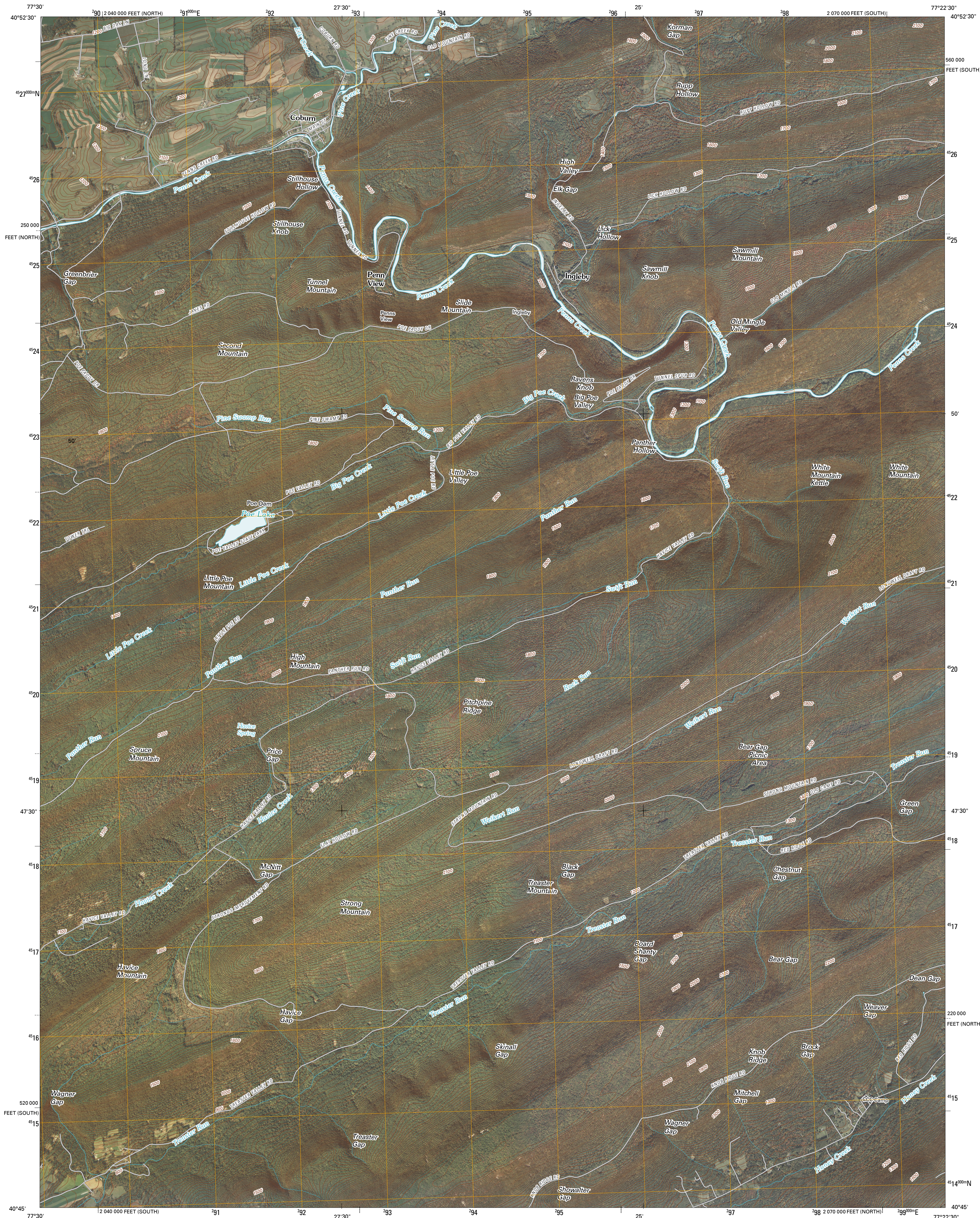




U.S. DEPARTMENT OF THE INTERIOR  
U. S. GEOLOGICAL SURVEY

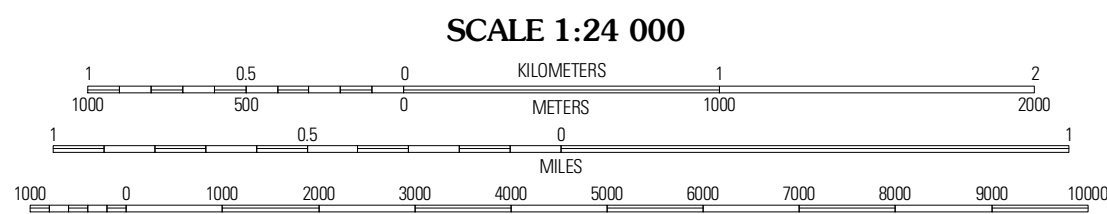
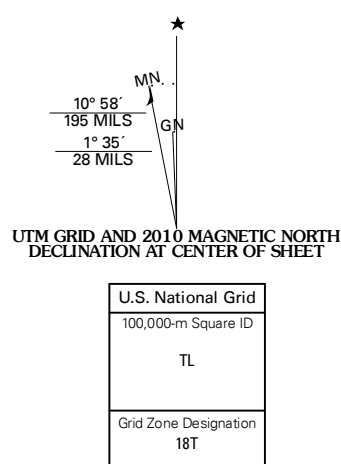


COBURN QUADRANGLE  
PENNSYLVANIA  
7.5-MINUTE SERIES

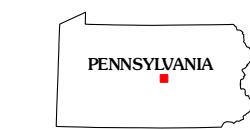


Produced by the United States Geological Survey  
North American Datum of 1983 (NAD83)  
World Geodetic System of 1984 (WGS84) - Projection and  
1 000-meter grid; Universal Transverse Mercator, Zone 18T  
10 000-foot ticks; Pennsylvania Coordinate System of 1983  
(south and north zones)

Imagery.....NAIP, October 2008  
Roads.....©2006-2010 Tele Atlas  
Names.....©2006-2010 GNIS, 2008  
Hydrography.....National Hydrography Dataset, 2008  
Contours.....National Elevation Dataset, 2000

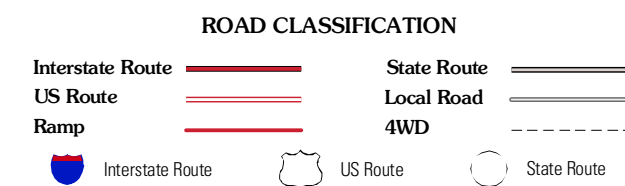


CONTOUR INTERVAL 20 FEET  
NORTH AMERICAN VERTICAL DATUM OF 1988  
This map was produced to conform with version 0.5.10 of the  
draft USGS Standards for 7.5-Minute Quadrangle Maps.  
A metadata file associated with this product is draft version 0.5.11



QUADRANGLE LOCATION		
Madisonburg	Millheim	Woodward
Spring Mills	Coburn	Wellert
Burnham	Alfarata	McClure

ADJOINING 7.5' QUADRANGLES



COBURN, PA  
2010