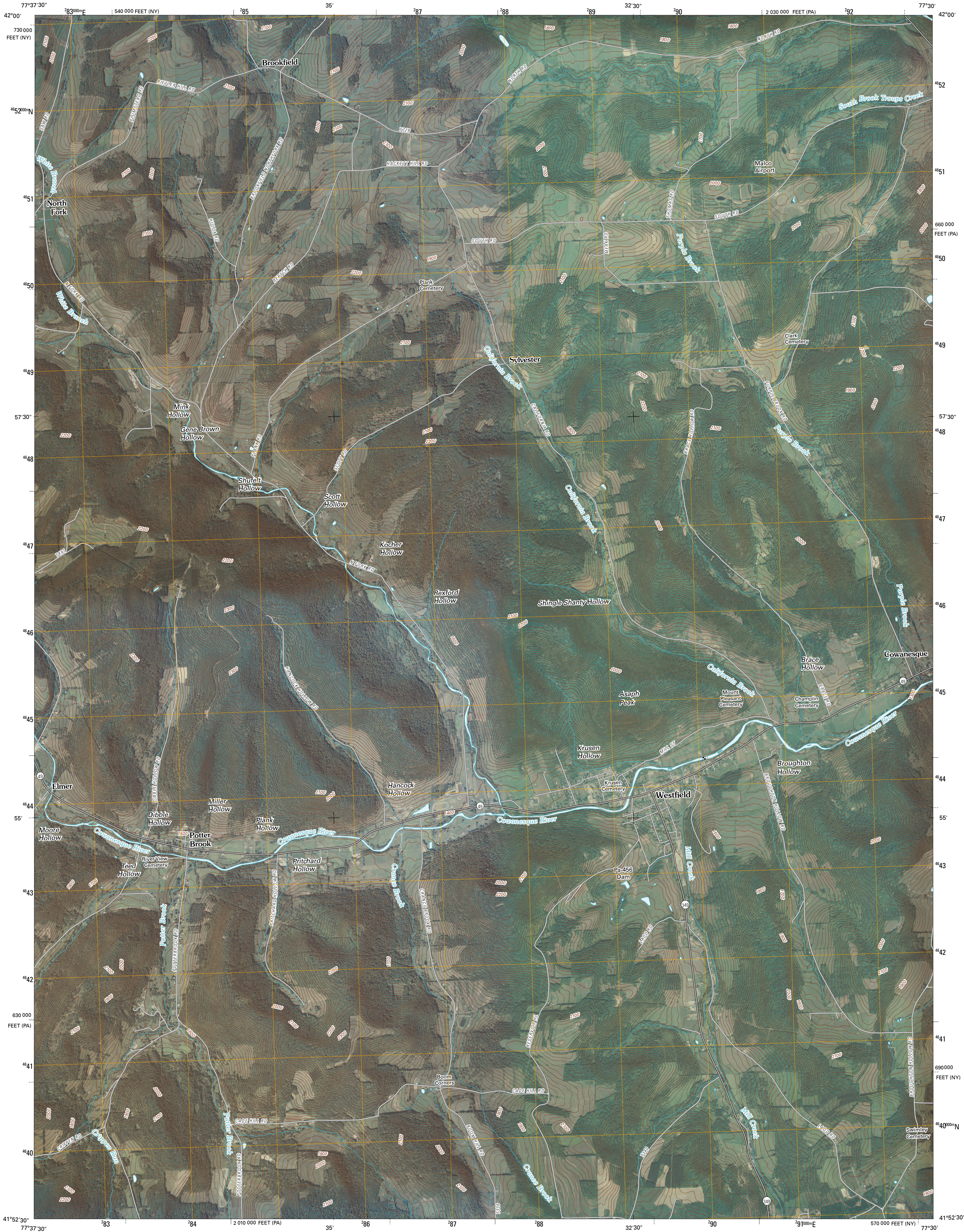




U.S. DEPARTMENT OF THE INTERIOR
U. S. GEOLOGICAL SURVEY

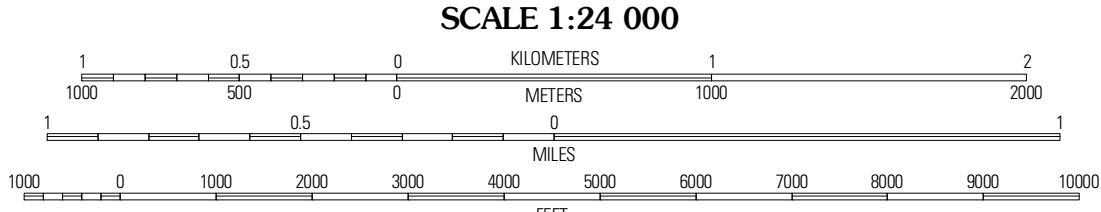
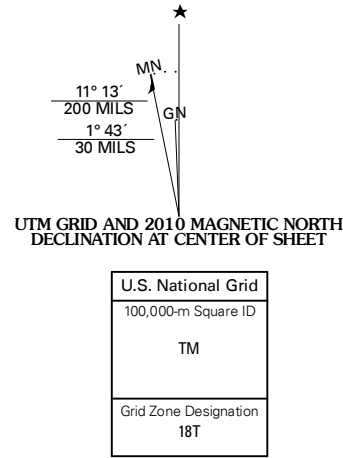


POTTER BROOK QUADRANGLE
PENNSYLVANIA-NEW YORK
7.5-MINUTE SERIES

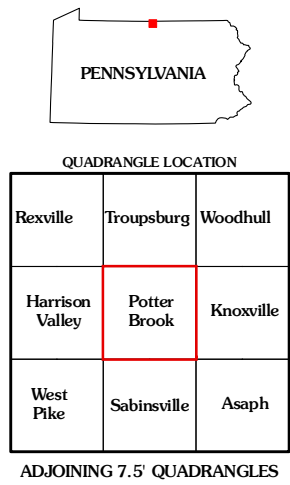


Produced by the United States Geological Survey
North American Datum of 1983 (NAD83)
World Geodetic System of 1984 (WGS84). Projection and
1 000-meter grid: Universal Transverse Mercator, Zone 18T
10 000-foot ticks: Pennsylvania Coordinate System of 1983
(north zone) and New York Coordinate System of 1983
(central zone)

Imagery:.....NAP, September 2008
Roads:.....©2006-2010 Tele Atlas
Names:.....GNS, 2008
Hydrography:.....National Hydrography Dataset, 2008
Contours:.....National Elevation Dataset, 2000



CONTOUR INTERVAL 20 FEET
NORTH AMERICAN VERTICAL DATUM OF 1988
This map was produced to conform with version 0.5.10 of the
draft USGS Standards for 7.5-Minute Quadrangle Maps.
A metadata file associated with this product is draft version 0.5.11



ROAD CLASSIFICATION
Interstate Route US Route Ramp
State Route Local Road 4WD

POTTER BROOK, PA-NY
2010