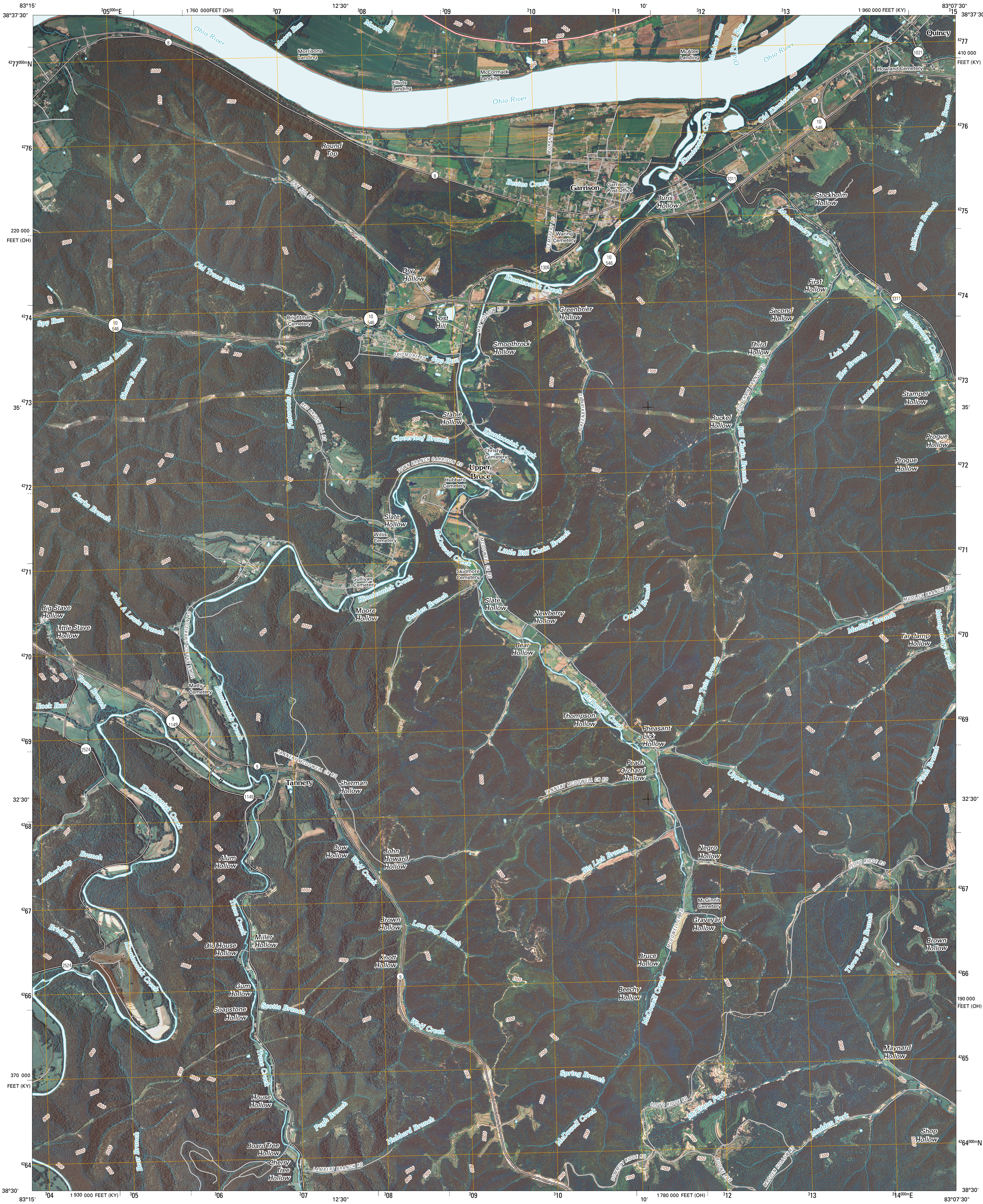




U.S. DEPARTMENT OF THE INTERIOR
U. S. GEOLOGICAL SURVEY

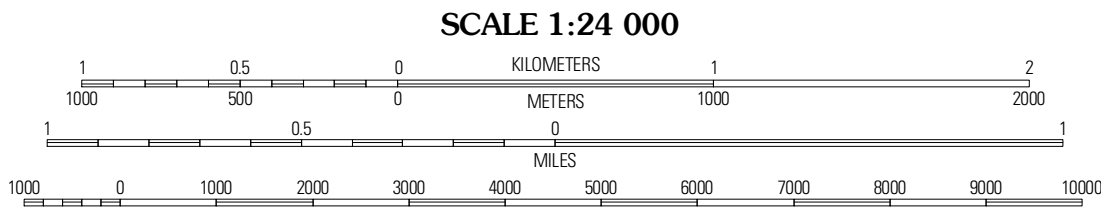
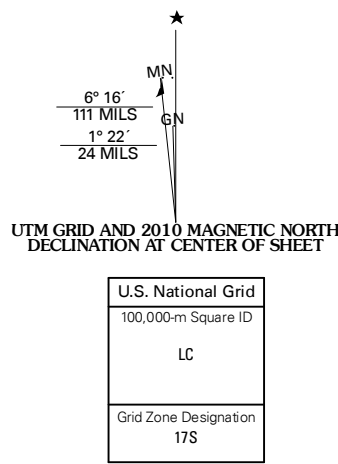


GARRISON QUADRANGLE
KENTUCKY-OHIO
7.5-MINUTE SERIES



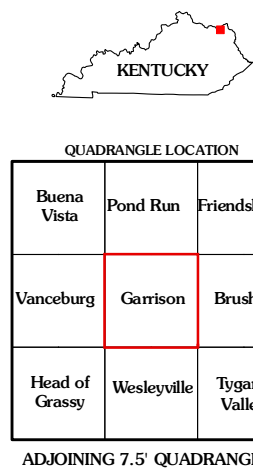
Produced by the United States Geological Survey
North American Datum of 1983 (NAD83)
World Geodetic System of 1984 (WGS84). Projection and
1 000-meter grid: Universal Transverse Mercator, Zone 17S
10 000-foot ticks: Kentucky Coordinate System of 1983
(north zone)
and Ohio Coordinate System of 1983
(south zone)

Imagery.....NAIP, July 2008
Roads.....62006-2010 Tele Atlas
Names.....GNIS, 2008
Hydrography.....National Hydrography Dataset, 2008
Contours.....National Elevation Dataset, 2004



CONTOUR INTERVAL 20 FEET
NORTH AMERICAN VERTICAL DATUM OF 1988

This map was produced to conform with version 0.5.10 of the
draft USGS Standards for 7.5-Minute Quadrangle Maps.
A metadata file associated with this product is draft version 0.5.11



ROAD CLASSIFICATION

Interstate Route
US Route
Ramp

State Route
Local Road
4WD

QUADRANGLE LOCATION

Buena Vista	Pond Run	Friendship
Vanceburg	Garrison	Brushart
Head of Grassy	Wesleyville	Tygart's Valley

ADJOINING 7.5 QUADRANGLES

GARRISON, KY-OH
2010