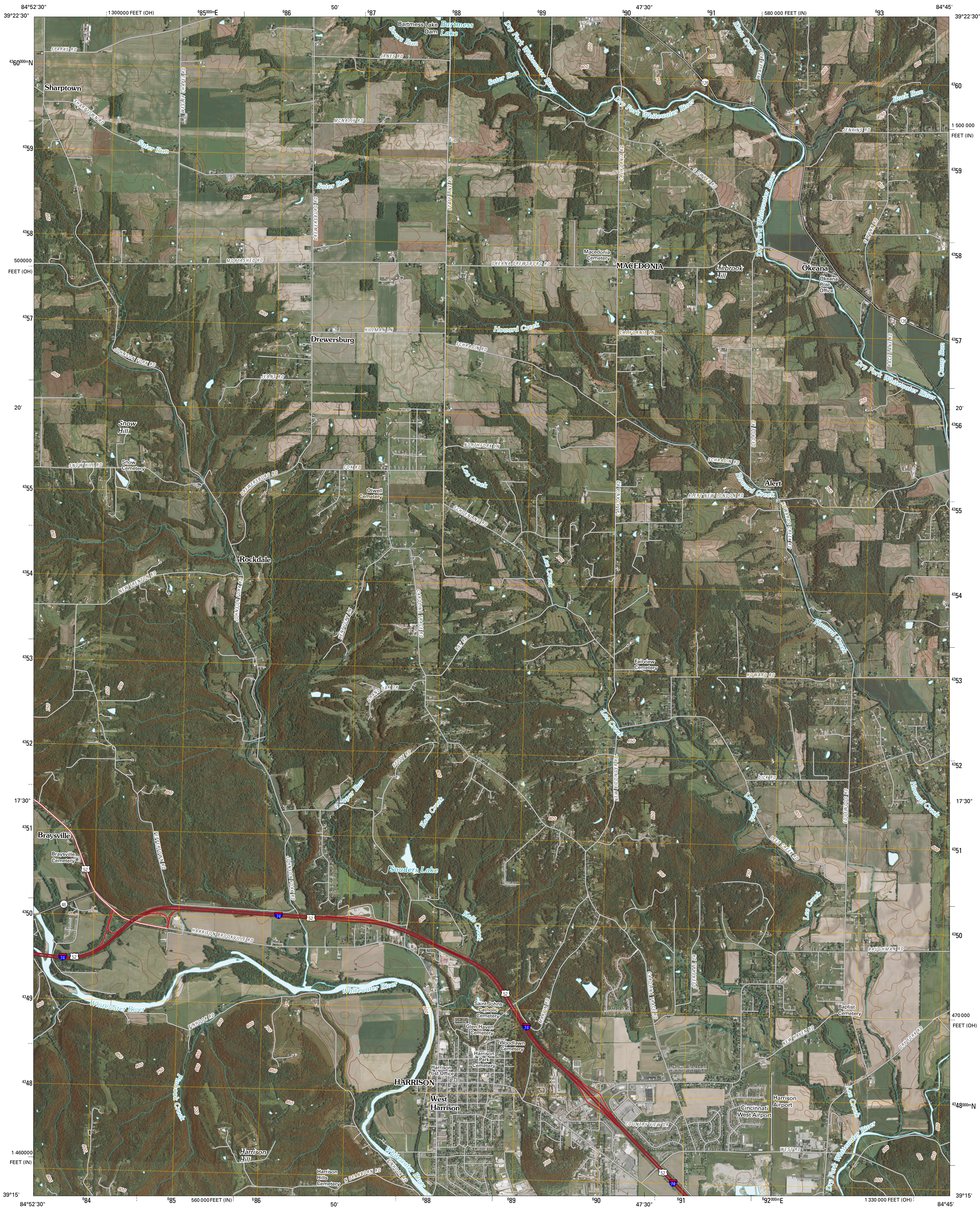




U.S. DEPARTMENT OF THE INTERIOR
U. S. GEOLOGICAL SURVEY

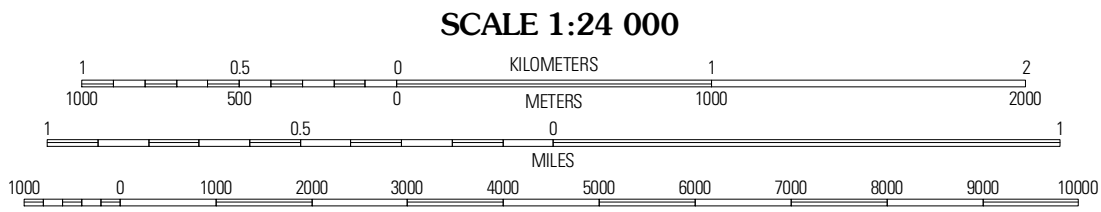
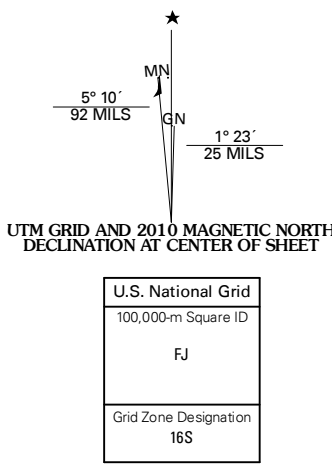


HARRISON QUADRANGLE
OHIO-INDIANA
7.5-MINUTE SERIES

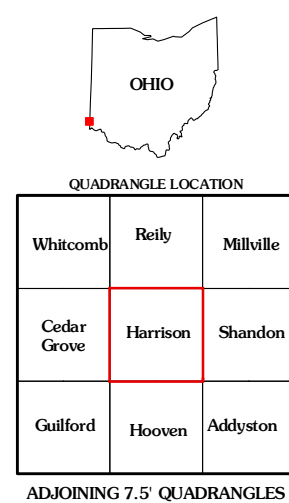


Produced by the United States Geological Survey
North American Datum of 1983 (NAD83)
World Geodetic System of 1984 (WGS84). Projection and
1 000-foot ticks: Ohio Coordinate System of 1983
(south zone) and Indiana Coordinate System of 1983
(east zone)

Imagery:.....NAIP, June 2004 - July 2008
Roads:.....©2006-2010 Tele Atlas
Names:.....GNIS, 2008
Hydrography:.....National Hydrography Dataset, 2004
Contours:.....National Elevation Dataset, 2004



CONTOUR INTERVAL 10 FEET
NORTH AMERICAN VERTICAL DATUM OF 1988
This map was produced to conform with version 0.5.10 of the
draft USGS Standards for 7.5-Minute Quadrangle Maps.
A metadata file associated with this product is draft version 0.5.11



ROAD CLASSIFICATION
Interstate Route
US Route
Ramp
State Route
Local Road
4WD
State Route

HARRISON, OH-IN
2010