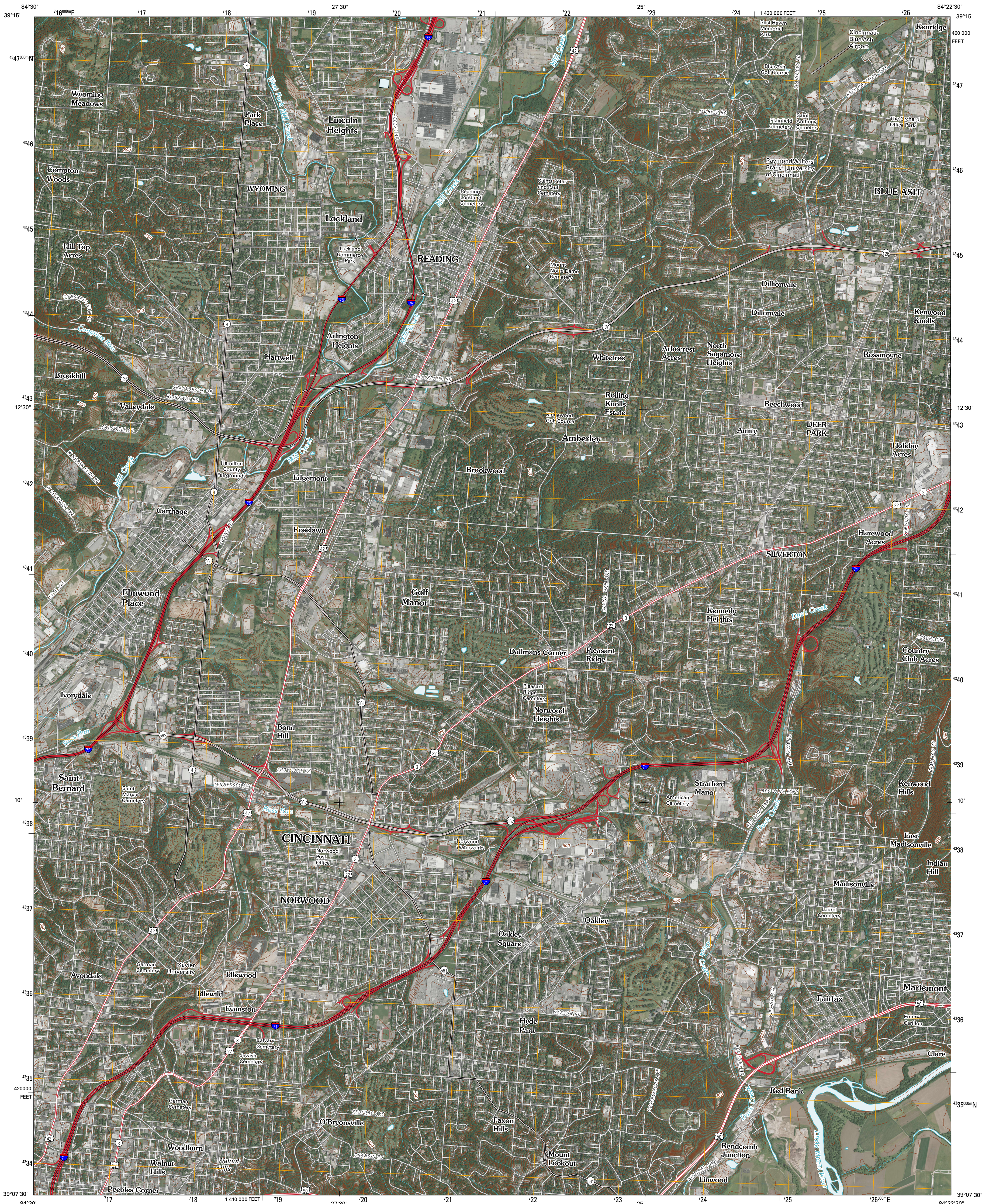




U.S. DEPARTMENT OF THE INTERIOR
U. S. GEOLOGICAL SURVEY

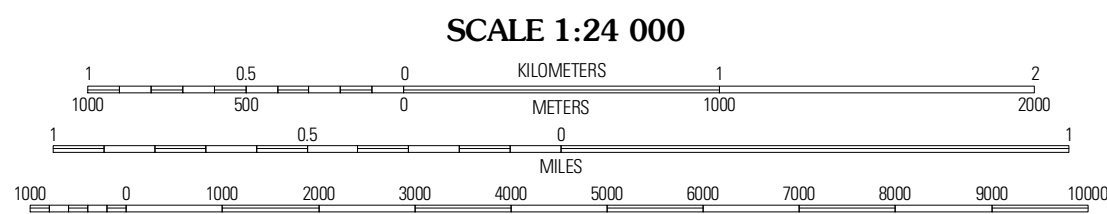
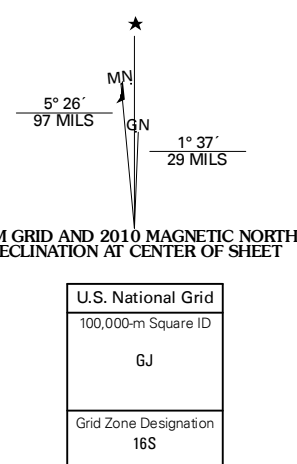


CINCINNATI EAST QUADRANGLE
OHIO
7.5-MINUTE SERIES



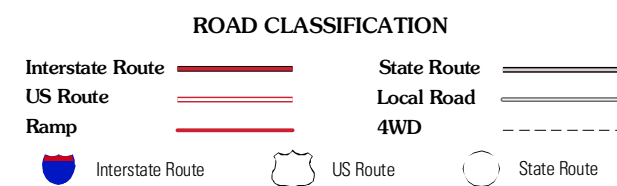
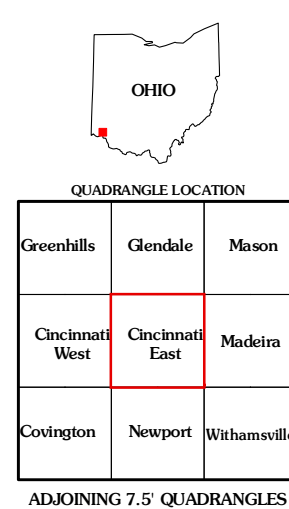
Produced by the United States Geological Survey
North American Datum of 1983 (NAD83)
World Geodetic System of 1984 (WGS84). Projection and
1 000-meter grid: Universal Transverse Mercator, Zone 16S
10 000-foot ticks: Ohio Coordinate System of 1983
(south zone)

Imagery.....©2006-2010 NAIP, June 2004
Roads.....©2006-2010 Tele Atlas
Names.....©2006-2010 GNIS, 2008
Hydrography.....National Hydrography Dataset, 2004
Contours.....National Elevation Dataset, 2004



CONTOUR INTERVAL 10 FEET
NORTH AMERICAN VERTICAL DATUM OF 1988

This map was produced to conform with version 0.5.10 of the
draft USGS Standards for 7.5-Minute Quadrangle Maps.
A metadata file associated with this product is draft version 0.5.11



CINCINNATI EAST, OH
2010