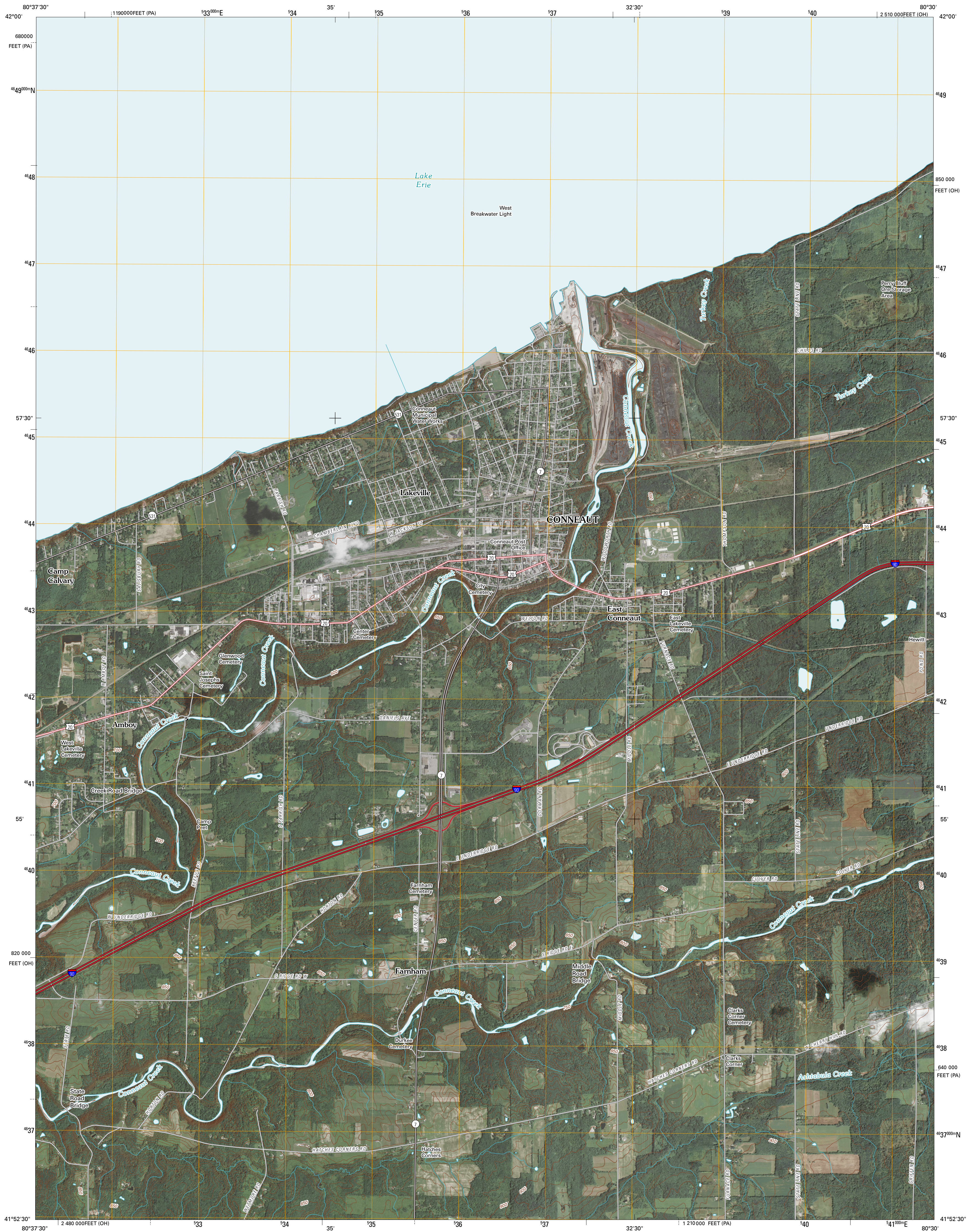




U.S. DEPARTMENT OF THE INTERIOR  
U. S. GEOLOGICAL SURVEY

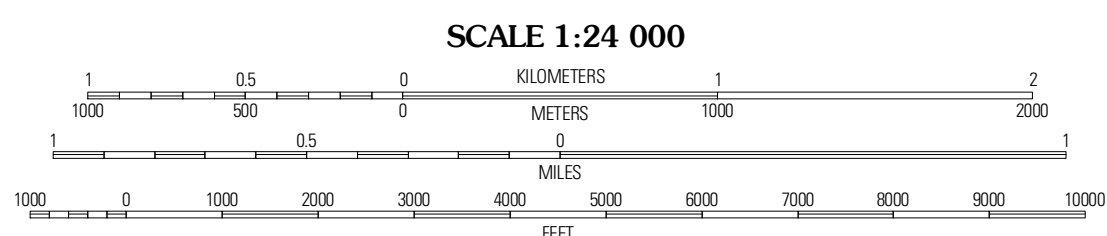
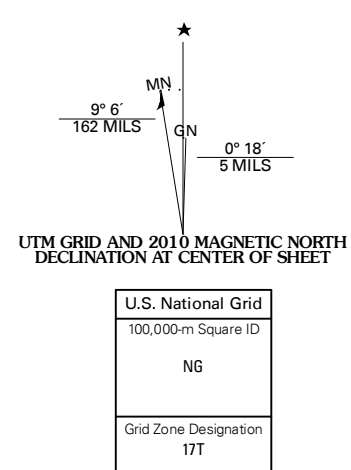


CONNEAUT QUADRANGLE  
OHIO-PENNSYLVANIA  
7.5-MINUTE SERIES

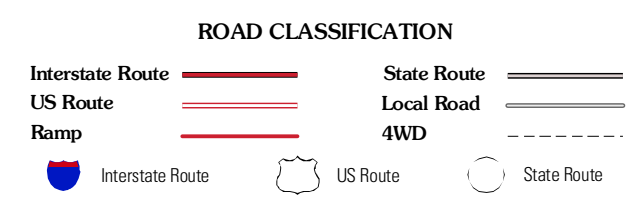
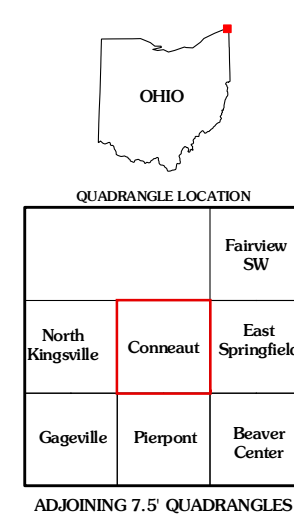


Produced by the United States Geological Survey  
North American Datum of 1983 (NAD83)  
World Geodetic System of 1984 (WGS84). Projection and  
1 000-meter grid: Universal Transverse Mercator, Zone 17T  
10 000-foot ticks: Ohio Coordinate System of 1983  
(north zone)  
and Pennsylvania Coordinate System of 1983  
(north zone)

Imagery:.....NAIP, September 2004 - July 2008  
Roads:.....©2006-2010 Tele Atlas  
Names:.....GNIS, 2008  
Hydrography:.....National Hydrography Dataset, 2004  
Contours:.....National Elevation Dataset, 2000



CONTOUR INTERVAL 10 FEET  
NORTH AMERICAN VERTICAL DATUM OF 1988  
This map was produced to conform with version 0.5.10 of the  
draft USGS Standards for 7.5-Minute Quadrangle Maps.  
A metadata file associated with this product is draft version 0.5.11



CONNEAUT, OH-PA  
2010