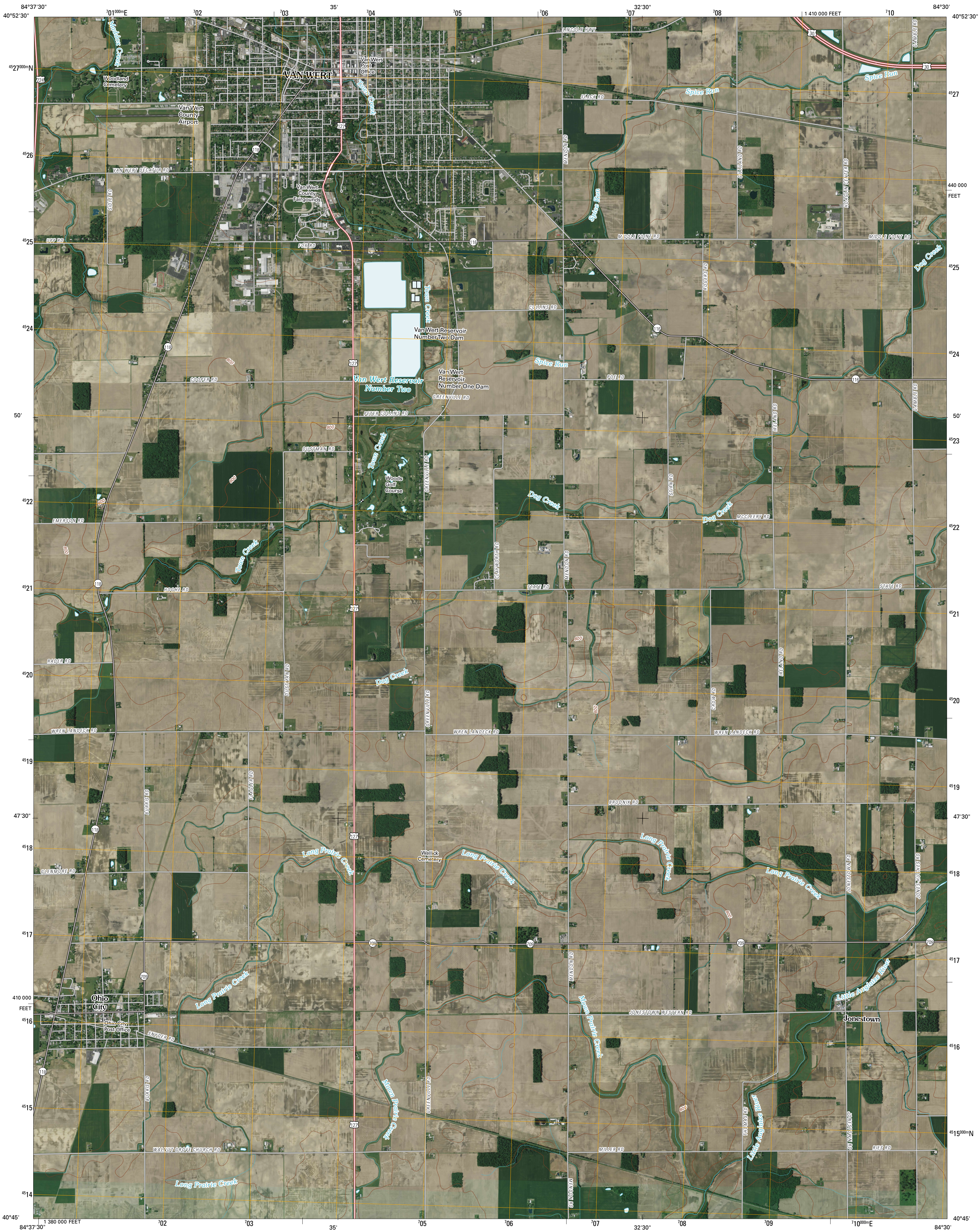




U.S. DEPARTMENT OF THE INTERIOR  
U. S. GEOLOGICAL SURVEY

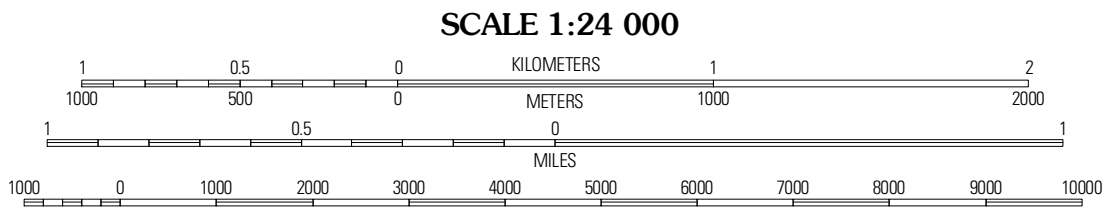
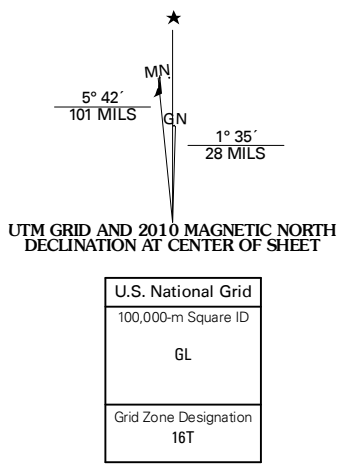


VAN WERT QUADRANGLE  
OHIO  
7.5-MINUTE SERIES

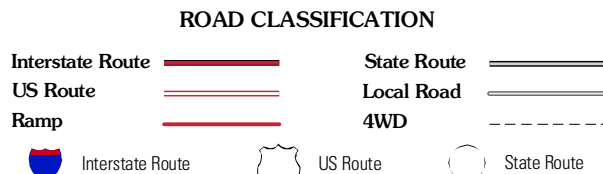
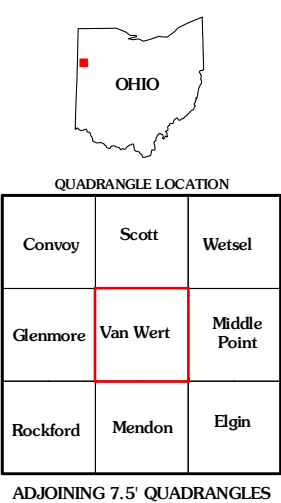


Produced by the United States Geological Survey  
North American Datum of 1983 (NAD83)  
World Geodetic System of 1984 (WGS84) Projection and  
1 000-meter grid; Universal Transverse Mercator, Zone 16T  
10 000-foot ticks: Ohio Coordinate System of 1983  
(north zone)

Imagery.....NAIP, June 2004  
Roads.....©2006-2010 Tele Atlas  
Names.....GNIS, 2008  
Hydrography.....National Hydrography Dataset, 2004  
Contours.....National Elevation Dataset, 2004



CONTOUR INTERVAL 10 FEET  
NORTH AMERICAN VERTICAL DATUM OF 1988  
This map was produced to conform with version 0.5.10 of the  
draft USGS Standards for 7.5-Minute Quadrangle Maps.  
A metadata file associated with this product is draft version 0.5.11



VAN WERT, OH  
2010