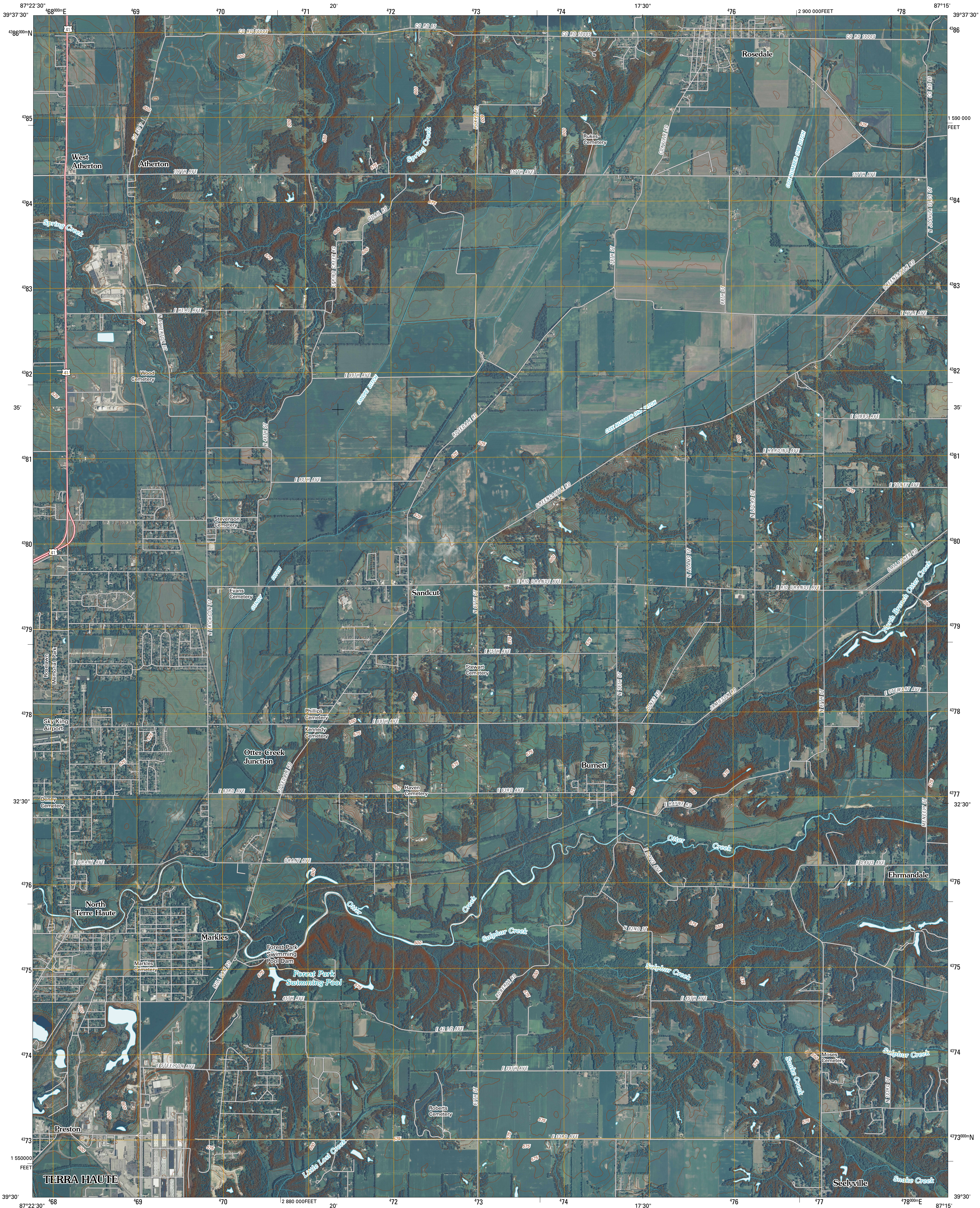




U.S. DEPARTMENT OF THE INTERIOR  
U. S. GEOLOGICAL SURVEY

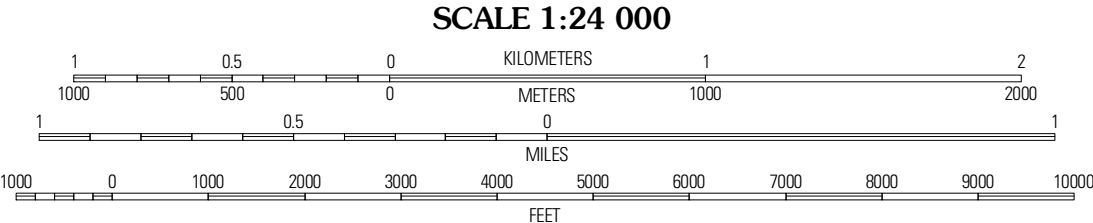
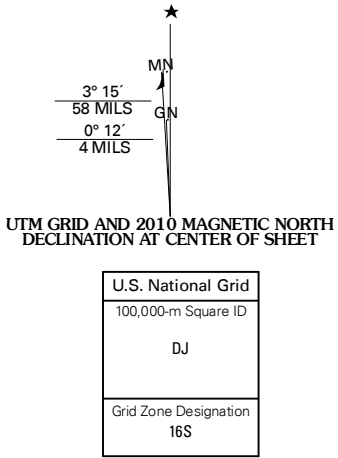


ROSEDALE QUADRANGLE  
INDIANA  
7.5-MINUTE SERIES

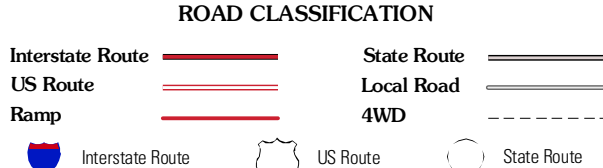
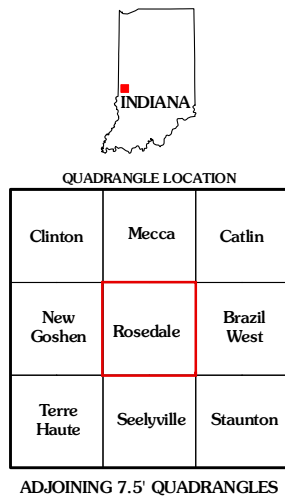


Produced by the United States Geological Survey  
North American Datum of 1983 (NAD83)  
World Geodetic System of 1984 (WGS84) Projection and  
1 000-meter grid; Universal Transverse Mercator, Zone 16S  
10 000-foot ticks: Indiana Coordinate System of 1983  
(west zone)

Imagery.....NAIP, August 2008  
Roads.....US Census Bureau TIGER data  
with limited USGS updates, 2005 - 2008  
Names.....GNIS, 2008  
Hydrography.....National Hydrography Dataset, 2008  
Contours.....National Elevation Dataset, 2007



CONTOUR INTERVAL 10 FEET  
NORTH AMERICAN VERTICAL DATUM OF 1988  
This map was produced to conform with version 0.5.10 of the  
draft USGS Standards for 7.5-Minute Quadrangle Maps.  
A metadata file associated with this product is also draft version 0.5.10



ROSEDALE, IN  
2010