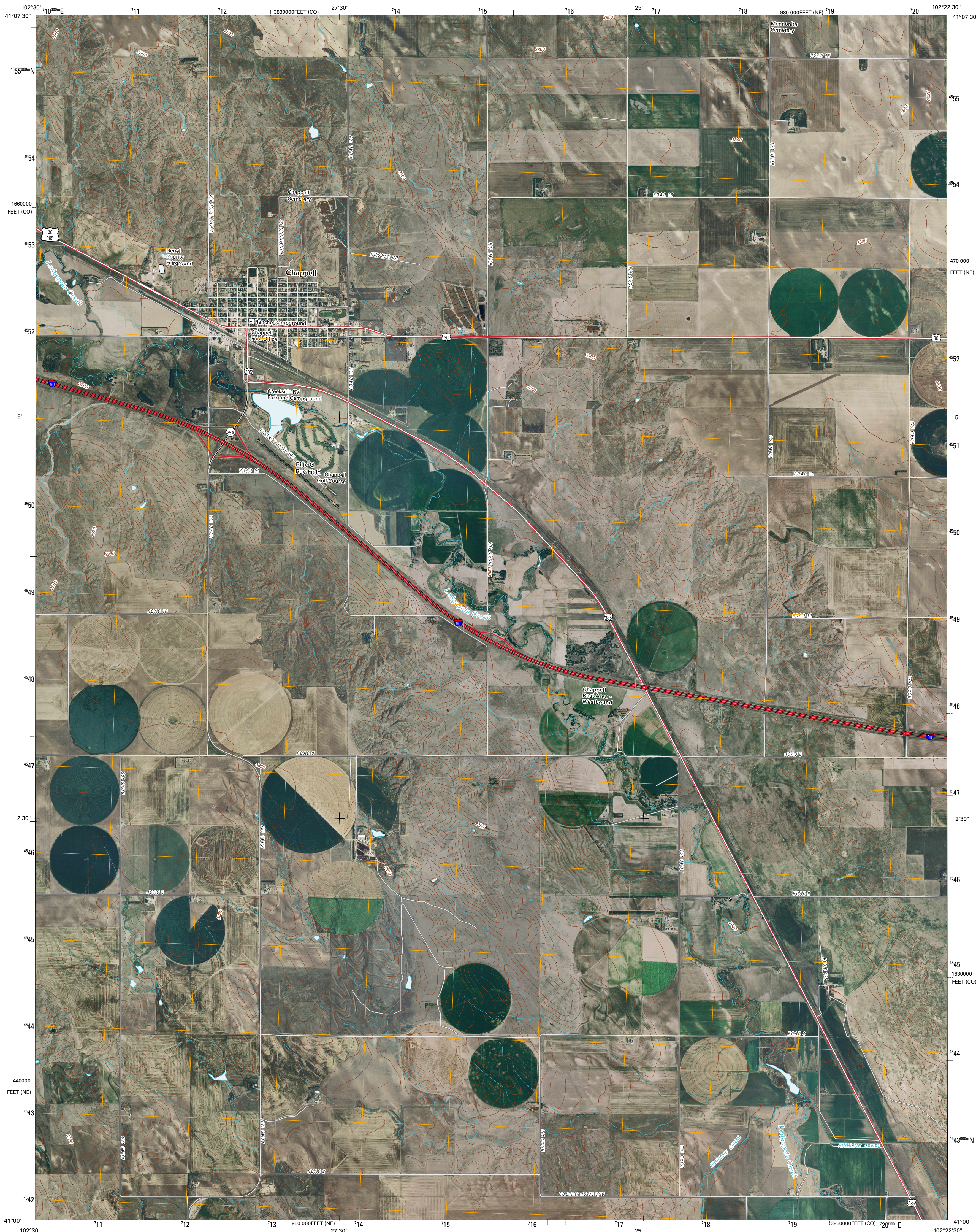




U.S. DEPARTMENT OF THE INTERIOR  
U. S. GEOLOGICAL SURVEY

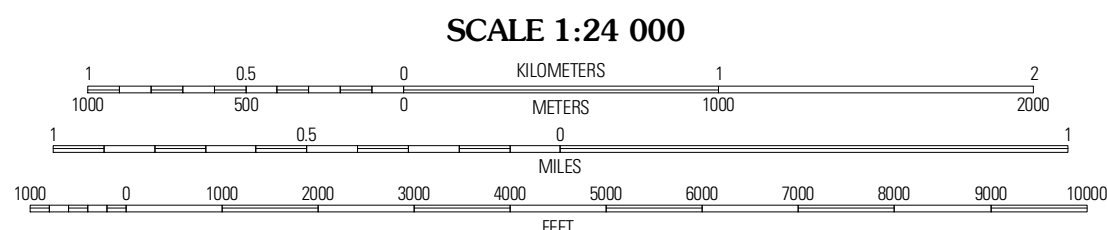
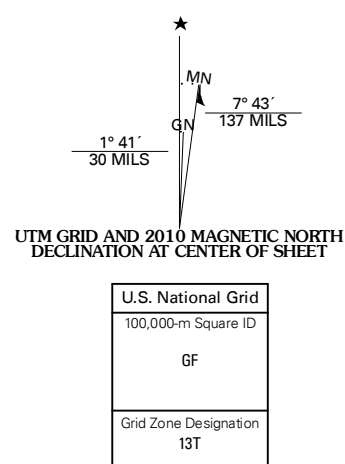


CHAPPELL QUADRANGLE  
NEBRASKA-COLORADO  
7.5-MINUTE SERIES



Produced by the United States Geological Survey  
North American Datum of 1983 (NAD83)  
World Geodetic System of 1984 (WGS84) Projection and  
10 000-foot ticks: Nebraska Coordinate System of 1983  
and Colorado Coordinate System of 1983  
(north zone)

Imagery.....NAIP, July 2006 - June 2009  
Roads.....G2006-2010 Tele Atlas  
Names.....GNIS, 2008  
Hydrography.....National Hydrography Dataset, 2006  
Contours.....National Elevation Dataset, 2002



CONTOUR INTERVAL 10 FEET  
NORTH AMERICAN VERTICAL DATUM OF 1988  
This map was produced to conform with version 0.5.10 of the  
draft USGS Standards for 7.5-Minute Quadrangle Maps.  
A metadata file associated with this product is draft version 0.5.11



QUADRANGLE LOCATION		
Mount Vernon	Chappell NW	Chappell NE
Lodgepole SE	Chappell	Chappell SE
Sedgwick	Ovid	Julesburg

ADJOINING 7.5' QUADRANGLES

ROAD CLASSIFICATION  
Interstate Route  
US Route  
Ramp  
State Route  
Local Road  
4WD  
Interstate Route  
US Route  
State Route

CHAPPELL, NE-CO  
2010