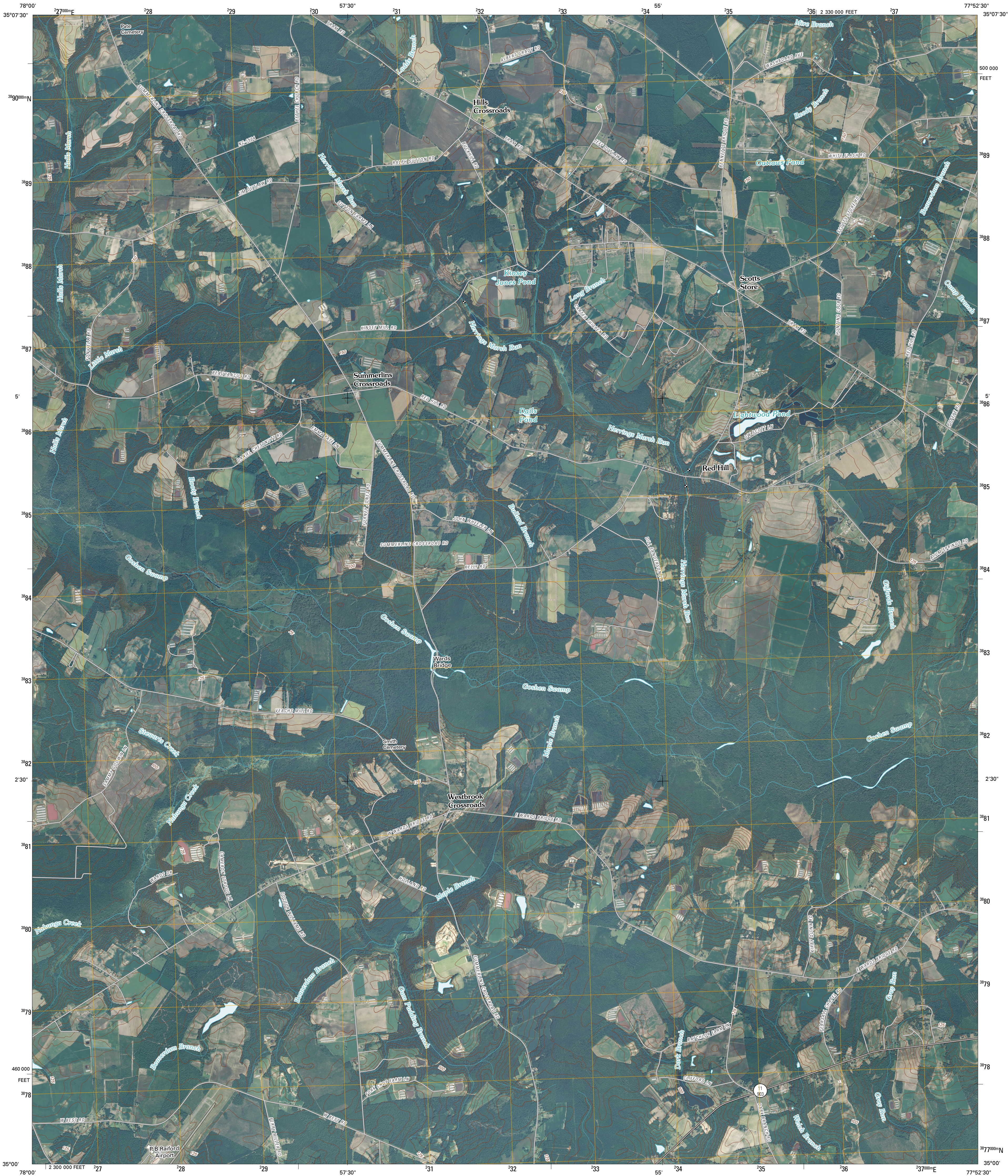




U.S. DEPARTMENT OF THE INTERIOR
U. S. GEOLOGICAL SURVEY



SUMMERLINS CROSSROADS QUADRANGLE
NORTH CAROLINA
7.5-MINUTE SERIES



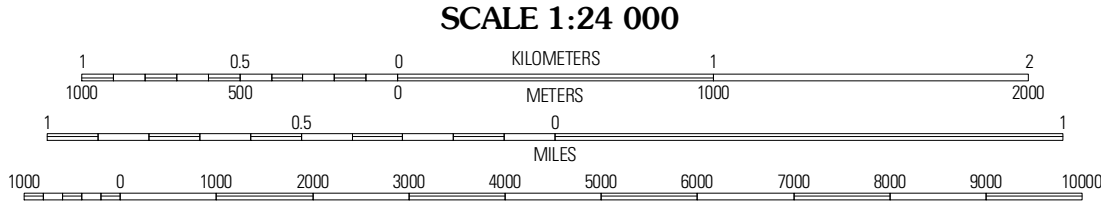
Produced by the United States Geological Survey
North American Datum of 1983 (NAD83)
World Geodetic System of 1984 (WGS84). Projection and
1 000-meter grid: Universal Transverse Mercator, Zone 18S
10 000-foot ticks: North Carolina Coordinate System of 1983

Imagery.....NAIP, September 2008
Roads.....©2006-2010 Tele Atlas
Names.....GNIS, 2008
Hydrography.....National Hydrography Dataset, 2008
Contours.....National Elevation Dataset, 2008

UTM GRID AND 2010 MAGNETIC NORTH
DECLINATION AT CENTER OF SHEET

9° 11' N
163 MILS
1° 41'
30 MILS

U.S. National Grid 100,000-m Square ID
TD
Grid Zone Designation 18S



CONTOUR INTERVAL 5 FEET
NORTH AMERICAN VERTICAL DATUM OF 1988

This map was produced to conform with version 0.5.10 of the
draft USGS Standards for 7.5-Minute Quadrangle Maps.
A metadata file associated with this product is draft version 0.5.11



QUADRANGLE LOCATION		
Mount Olive	Williams	Seven Springs
Warsaw North	Summerlins Crossroads	Albertson
Warsaw South	Kernsawville	Beaulieuville

ADJOINING 7.5' QUADRANGLES

ROAD CLASSIFICATION

Interstate Route
US Route
Ramp

State Route
Local Road
4WD

SUMMERLINS CROSSROADS, NC
2010