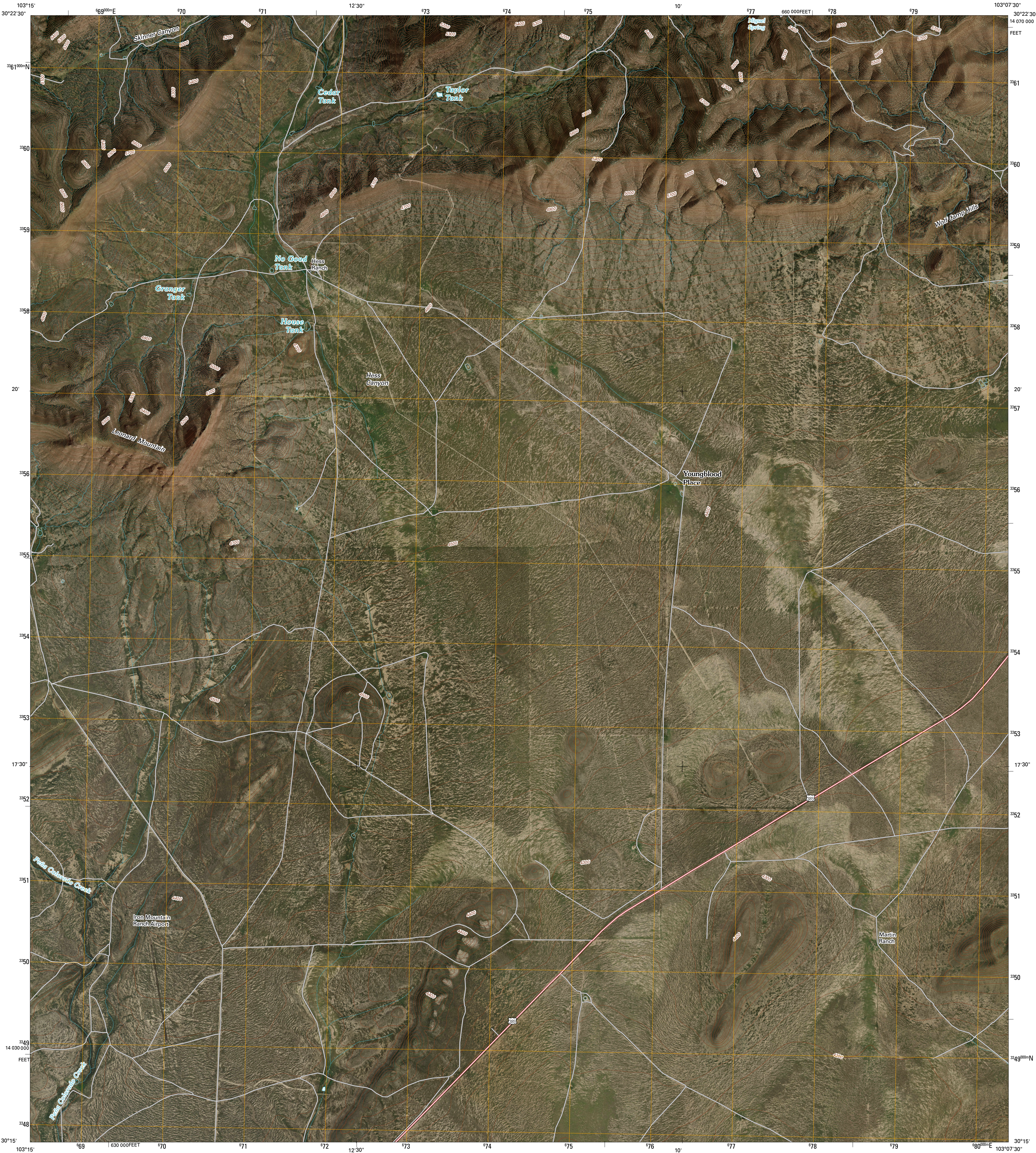




U.S. DEPARTMENT OF THE INTERIOR
U. S. GEOLOGICAL SURVEY

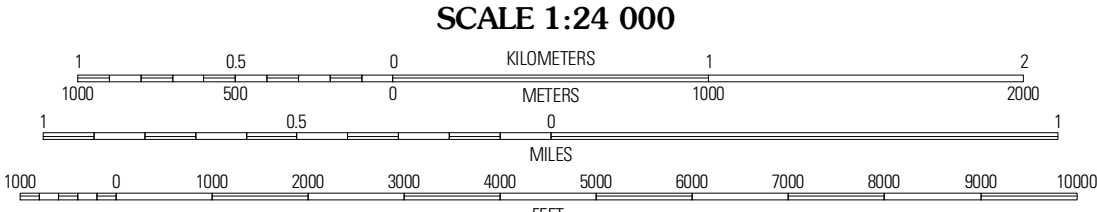
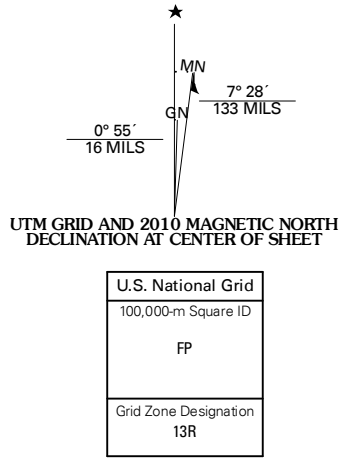


LEONARD MOUNTAIN QUADRANGLE
TEXAS
7.5-MINUTE SERIES



Produced by the United States Geological Survey
North American Datum of 1983 (NAD83)
World Geodetic System of 1984 (WGS84). Projection and
10 000-meter grid: Universal Transverse Mercator, Zone 13R
(south central zone)

Imagery.....NAP, September 2008
Roads.....US Census Bureau TIGER data
with limited USGS updates, 2006
Names.....GNIS, 2008
Hydrography.....National Hydrography Dataset, 1995
Contours.....National Elevation Dataset, 2006



CONTOUR INTERVAL 20 FEET
NORTH AMERICAN VERTICAL DATUM OF 1988
This map was produced to conform with version 0.5.10 of the
draft USGS Standards for 7.5-Minute Quadrangle Maps.
A metadata file associated with this product is also draft version 0.5.10



QUADRANGLE LOCATION			
Old Blue Mountain	Hess Canyon	Glass Mountain Ranch	
Gilliland Peak	Leonard Mountain	Wolf Camp Hills	
Beckwith Hills	Marathon	Lightning Hills	

ADJOINING 7.5 QUADRANGLES
TX 30103-142

ROAD CLASSIFICATION
Interstate Route
US Route
Ramp
State Route
Local Road
4WD

LEONARD MOUNTAIN, TX
2010