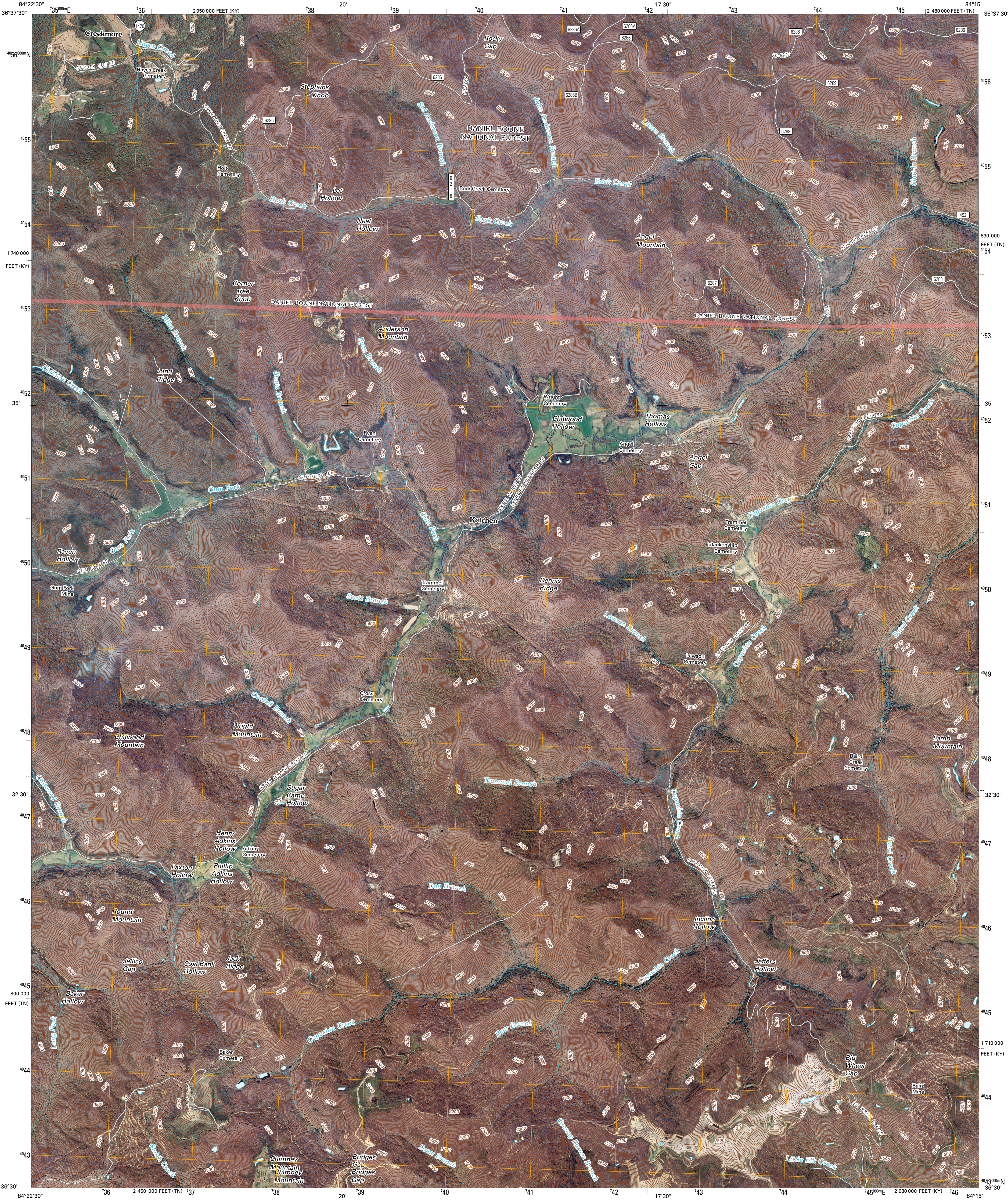




U.S. DEPARTMENT OF THE INTERIOR
U. S. GEOLOGICAL SURVEY

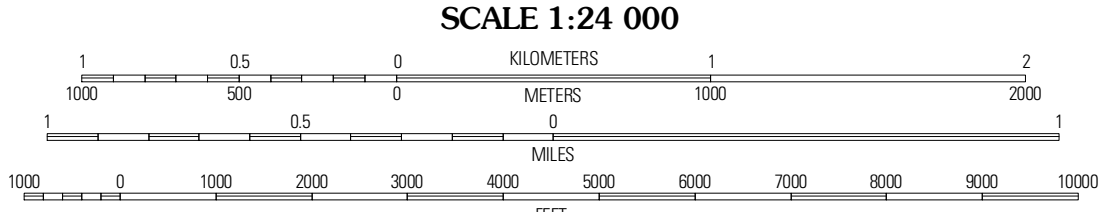
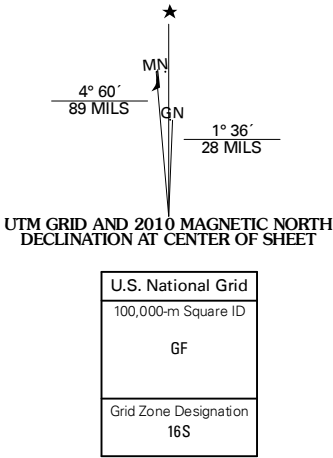


KETCHEN QUADRANGLE
TENNESSEE-KENTUCKY
7.5-MINUTE SERIES

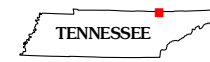


Produced by the United States Geological Survey
North American Datum of 1983 (NAD83)
World Geodetic System of 1984 (WGS84). Projection and
1 000-meter grid: Universal Transverse Mercator, Zone 16S
10 000-foot ticks: Tennessee Coordinate System of 1983
and Kentucky Coordinate System of 1983
(south zone)

Imagery.....NAIP, April 2008
Roads.....US Census Bureau TIGER data
with limited USGS updates, 2004 - 2008
Roads within US Forest Service Lands.....FS Topo Data
with limited Forest Service updates, 2009
Names.....National Hydrography Dataset, 2008
Hydrography.....National Hydrography Dataset, 2008
Contours.....National Elevation Dataset, 2002



CONTOUR INTERVAL 20 FEET
NORTH AMERICAN VERTICAL DATUM OF 1988
This map was produced to conform with version 0.5.10 of the
draft USGS Standards for 7.5-Minute Quadrangle Maps.
A metadata file associated with this product is draft version 0.5.12



Whitley City	Hollyhill	Williamsburg
Winfield	Ketchen	Jalisco West
Huntsville	Pioneer	Ivydell

ROAD CLASSIFICATION
Interstate Route
US Route
Ramp
Interstate Route
US Route
FS Primary Route
State Route
Local Road
4WD
FS Passenger
Route
FS High Clearance
Route
Check with local Forest Service unit for current travel conditions and restrictions.

KETCHEN, TN-KY
2010