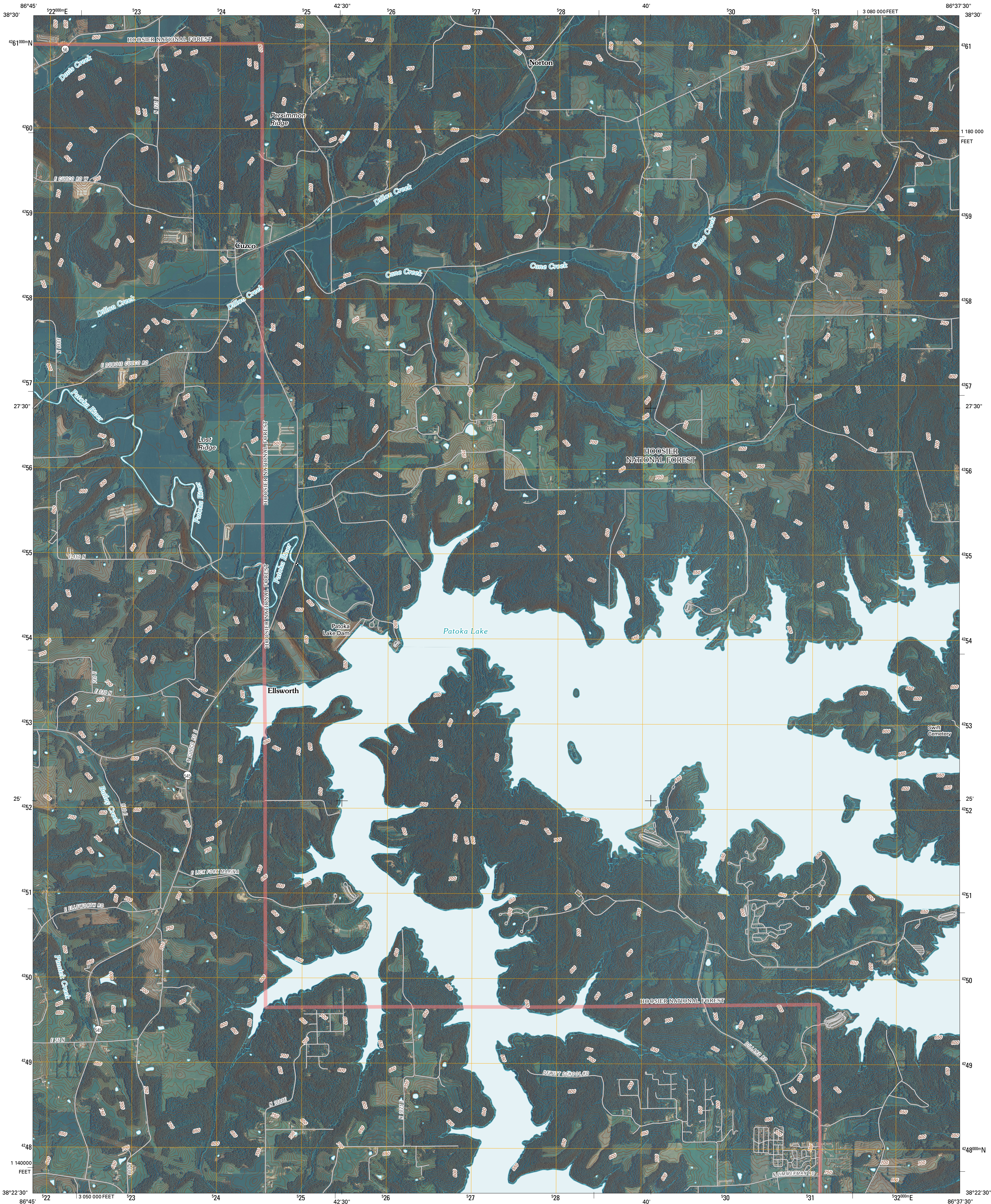




U.S. DEPARTMENT OF THE INTERIOR
U. S. GEOLOGICAL SURVEY

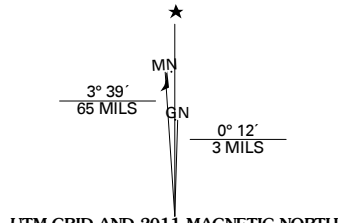


CUZCO QUADRANGLE
INDIANA
7.5-MINUTE SERIES

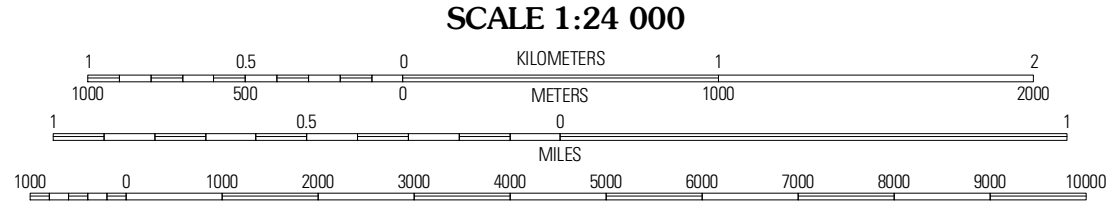


Produced by the United States Geological Survey
North American Datum of 1983 (NAD83)
World Geodetic System of 1984 (WGS84). Projection and
1 000-meter grid: Universal Transverse Mercator, Zone 16S
10 000-foot ticks: Indiana Coordinate System of 1983
(west zone)

Imagery.....NAP, July 2008
Roads.....US Census Bureau TIGER data
with limited USGS updates, 2004 - 2008
Roads within US Forest Service Lands.....FS Topo Data
with limited Forest Service updates, 2009
Names.....GNIS, 2009
Hydrography.....National Hydrography Dataset, 2008
Contours.....National Elevation Dataset, 2004



U.S. National Grid
100,000-m Square ID
EH
Grid Zone Designation
16S



CONTOUR INTERVAL 10 FEET
NORTH AMERICAN VERTICAL DATUM OF 1988
This map was produced to conform with version 0.5.10 of the
draft USGS Standards for 7.5-Minute Quadrangle Maps.
A metadata file associated with this product is draft version 0.5.12

QUADRANGLE LOCATION		
Rusk	Hillham	French Lick
Dubois	Cuzco	Greenbrier
Saint Anthony	Birdseye	Taswell

ADJOINING 7.5' QUADRANGLES

ROAD CLASSIFICATION

Interstate Route	State Route
US Route	Local Road
Ramp	4WD

Legend: Interstate Route (blue shield), US Route (red shield), Ramp (blue shield), US Route (red shield), Local Road (black line), 4WD (dashed line), FS Primary Route (white line), FS Passenger Route (dashed line), FS High Clearance Route (dashed line).

Check with local Forest Service unit for current travel conditions and restrictions.

CUZCO, IN
2011