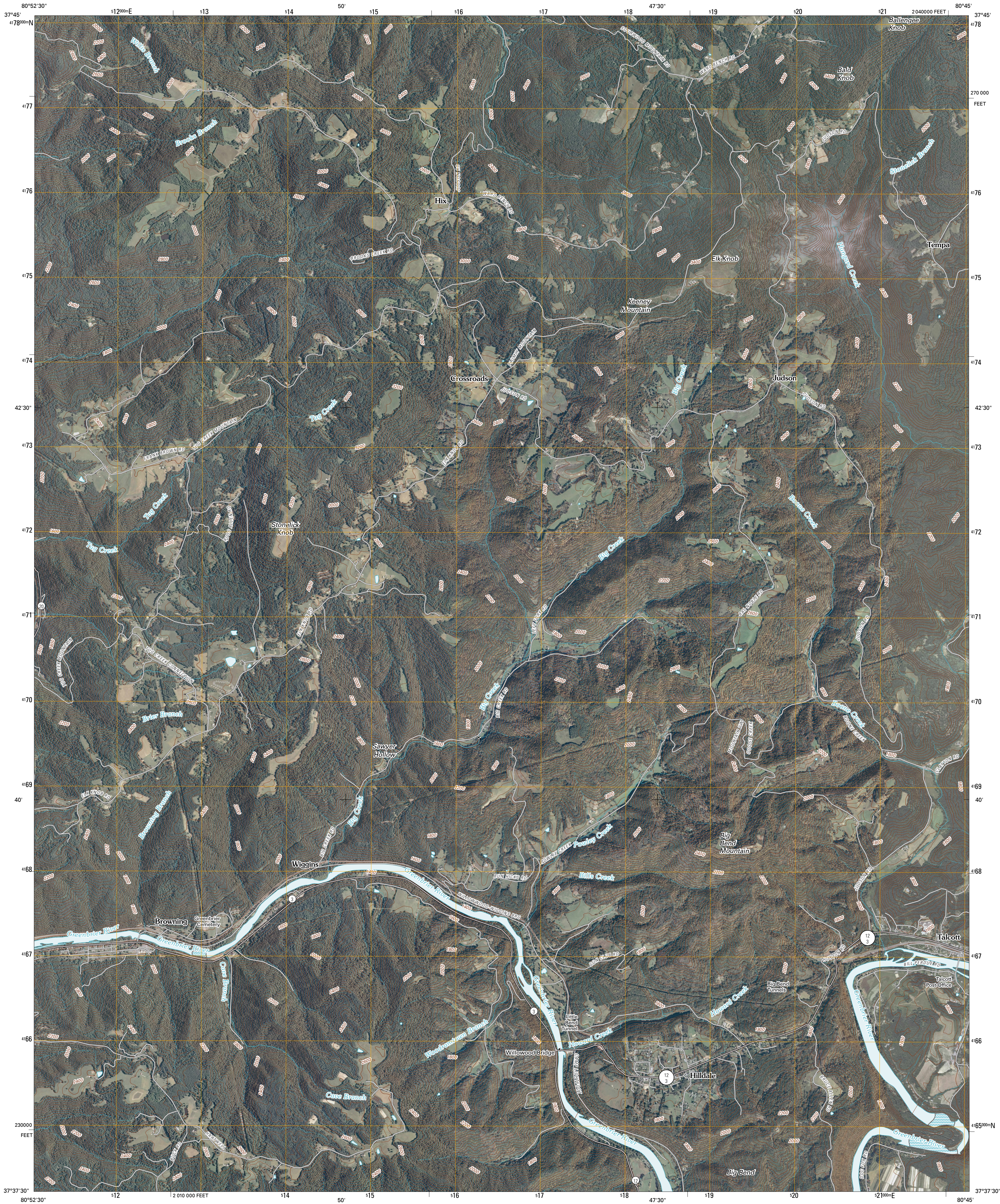




U.S. DEPARTMENT OF THE INTERIOR
U. S. GEOLOGICAL SURVEY



TALCOTT QUADRANGLE
WEST VIRGINIA
7.5-MINUTE SERIES



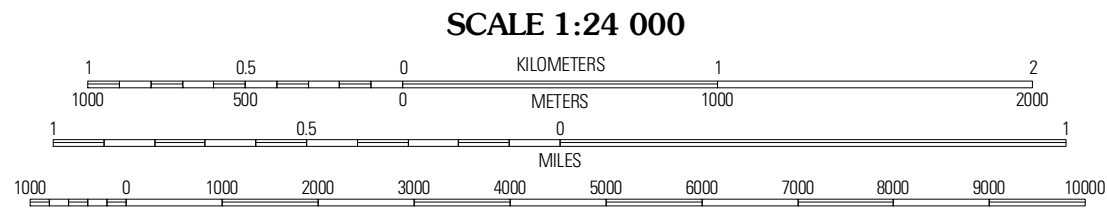
Produced by the United States Geological Survey
North American Datum of 1983 (NAD83)
World Geodetic System of 1984 (WGS84). Projection and
1 000-meter grid: Universal Transverse Mercator, Zone 17S
10 000-foot ticks: West Virginia Coordinate System of 1983
(south zone)

Imagery.....NAIP, June 2009 - October 2009
Roads.....©2006-2010 Tele Atlas
Names.....©GNIS, 2009
Hydrography.....National Hydrography Dataset, 2009
Contours.....National Elevation Dataset, 2005

UTM GRID AND 2011 MAGNETIC NORTH
DECLINATION AT CENTER OF SHEET

7° 56'
141 MILLS
0° 7'
2 MILLS

U.S. National Grid
100,000-m Square ID
NB
Grid Zone Designation
17S



CONTOUR INTERVAL 40 FEET
NORTH AMERICAN VERTICAL DATUM OF 1988

This map was produced to conform with version 0.5.10 of the
draft USGS Standards for 7.5-Minute Quadrangle Maps.
A metadata file associated with this product is draft version 0.5.11



QUADRANGLE LOCATION		
Meadow Creek	Meadow Bridge	Dawson
Hinton	Talcott	Alderson
Pipestem	Forest Hill	Greenville

ADJOINING 7.5' QUADRANGLES

ROAD CLASSIFICATION

Interstate Route
US Route
Ramp

State Route
Local Road
4WD

TALCOTT, WV
2011