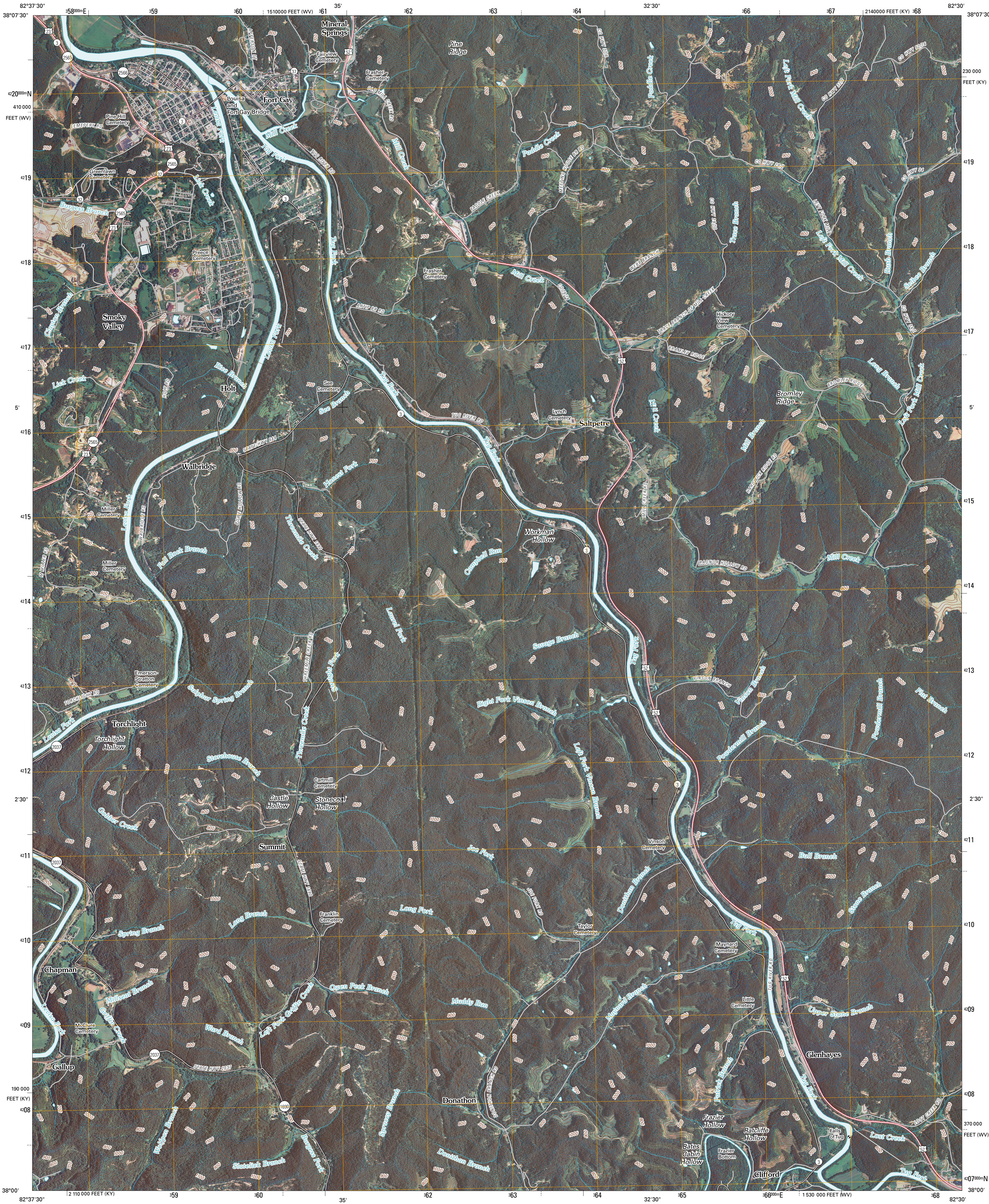




U.S. DEPARTMENT OF THE INTERIOR  
U. S. GEOLOGICAL SURVEY

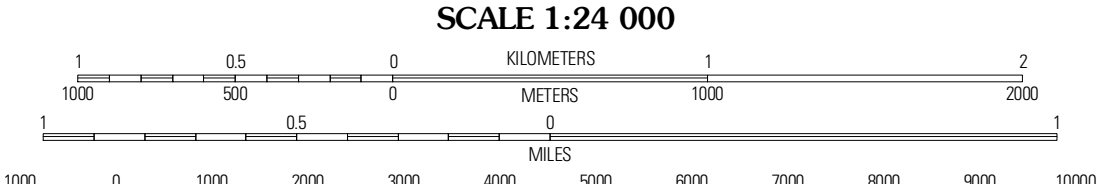
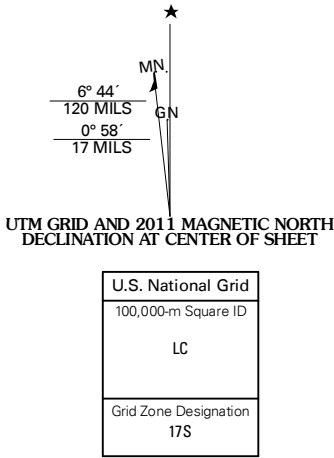


LOUISA QUADRANGLE  
KENTUCKY-WEST VIRGINIA  
7.5-MINUTE SERIES



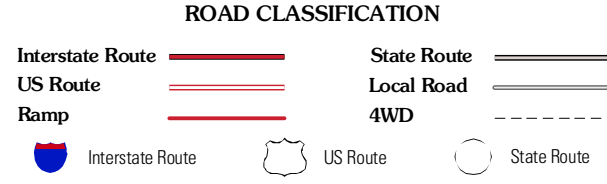
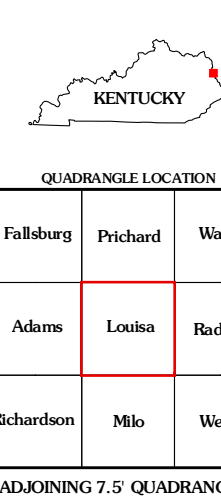
Produced by the United States Geological Survey  
North American Datum of 1983 (NAD83)  
World Geodetic System of 1984 (WGS84). Projection and  
1 000-meter grid. Universal Transverse Mercator, Zone 17S  
10 000-foot ticks: Kentucky Coordinate System of 1983  
(north zone)  
and West Virginia Coordinate System of 1983  
(south zone)

Imagery.....©2006-2010 NAIP, July 2008  
Roads.....©2006-2010 Tele Atlas  
Names.....GNS, 2009  
Hydrography.....National Hydrography Dataset, 2008  
Contours.....National Elevation Dataset, 2006



CONTOUR INTERVAL 20 FEET  
NORTH AMERICAN VERTICAL DATUM OF 1988

This map was produced to conform with version 0.5.10 of the  
draft USGS Standards for 7.5-Minute Quadrangle Maps.  
A metadata file associated with this product is draft version 0.5.11



LOUISA, KY-WV  
2011