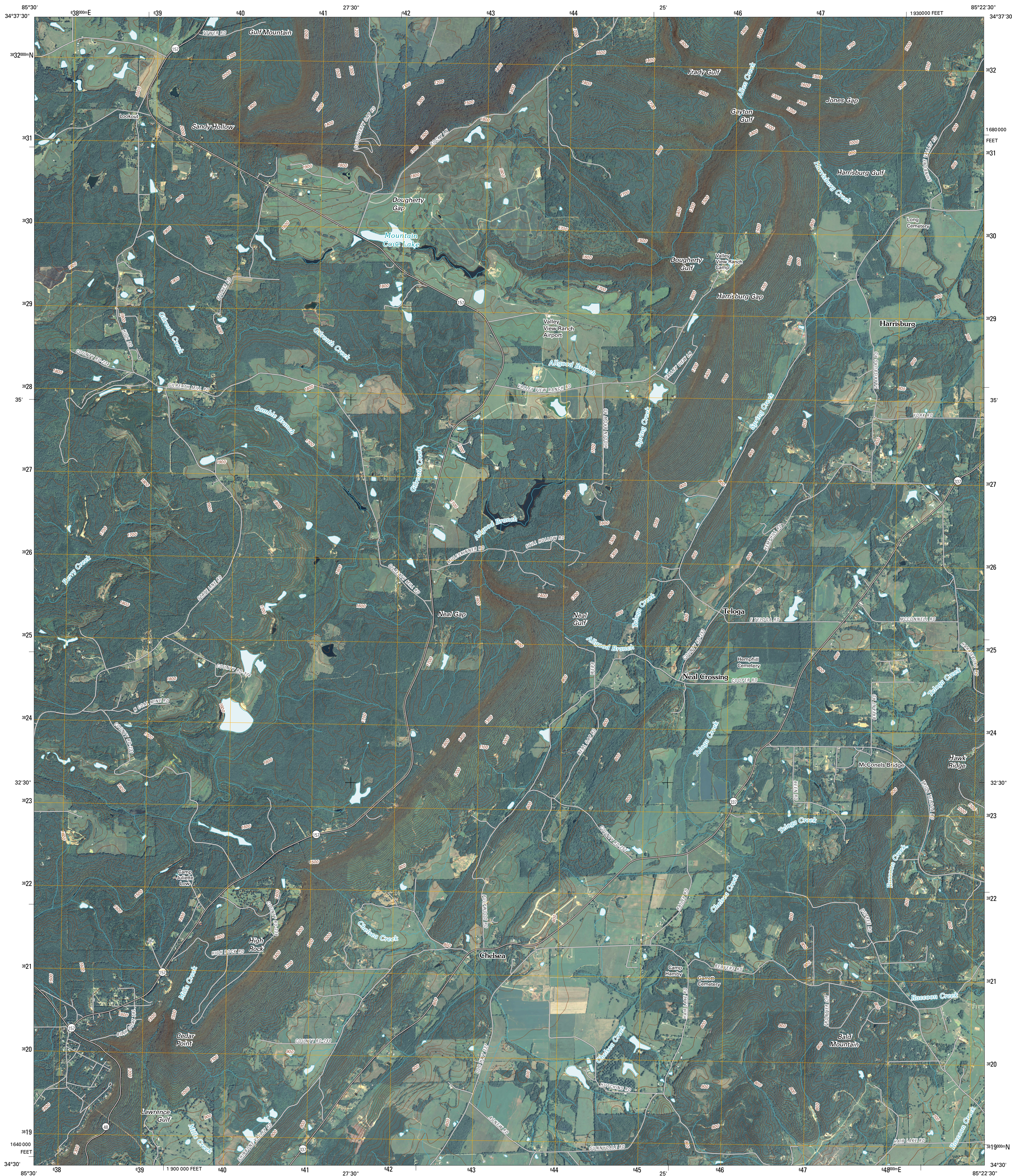




U.S. DEPARTMENT OF THE INTERIOR
U. S. GEOLOGICAL SURVEY



DOUGHERTY GAP QUADRANGLE
GEORGIA
7.5-MINUTE SERIES



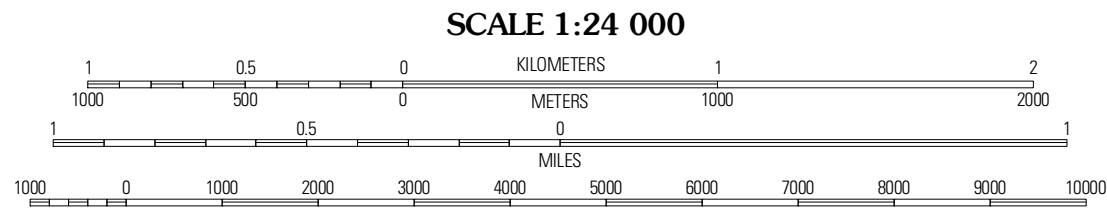
Produced by the United States Geological Survey
North American Datum of 1983 (NAD83)
World Geodetic System of 1984 (WGS84). Projection and
1 000-meter grid: Universal Transverse Mercator, Zone 16S
10 000-foot ticks: Georgia Coordinate System of 1983
(west zone)

Imagery.....NAIP, August 2009 - September 2009
Roads.....©2006-2010 Tele Atlas
Names.....GNIS, 2009
Hydrography.....National Hydrography Dataset, 2009
Contours.....National Elevation Dataset, 2009

UTM GRID AND 2011 MAGNETIC NORTH
DECLINATION AT CENTER OF SHEET

2° 57' N
70 MILS
0° 53' N
16 MILS

U.S. National Grid
100,000m Square ID
FD
Grid Zone Designation
16S



CONTOUR INTERVAL 20 FEET
NORTH AMERICAN VERTICAL DATUM OF 1988

This map was produced to conform with version 0.5.10 of the
draft USGS Standards for 7.5-Minute Quadrangle Maps.
A metadata file associated with this product is draft version 0.5.11



Sulphur Springs	Cedar Grove	Lafayette
Valley Head	Dougherty Gap	Tifton
Jamestown	Lyerly	Summersville

ADJOINING 7.5 QUADRANGLES

ROAD CLASSIFICATION

Interstate Route
US Route
Ramp

State Route
Local Road
4WD

Interstate Route
US Route
State Route

DOUGHERTY GAP, GA
2011