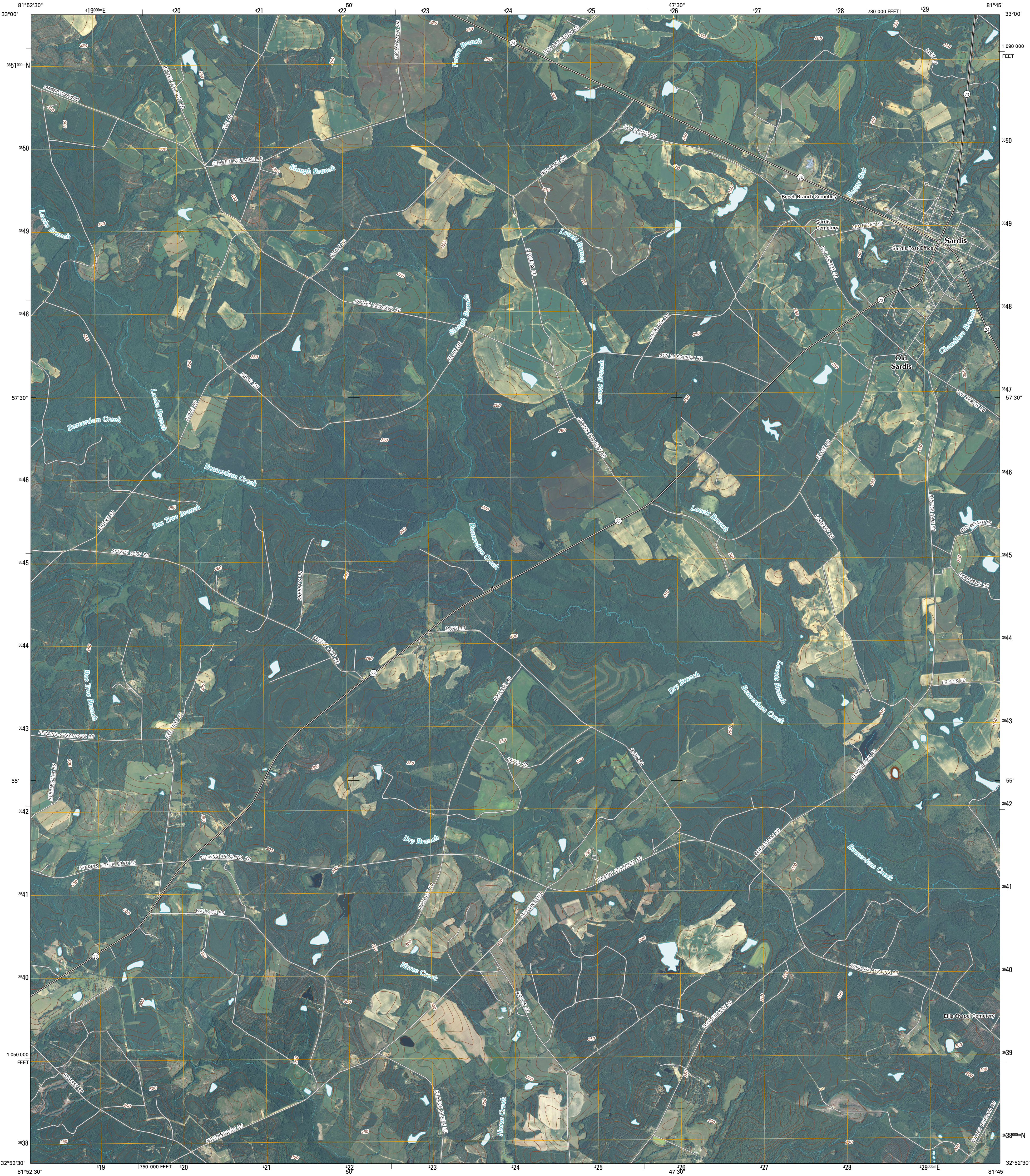




U.S. DEPARTMENT OF THE INTERIOR  
U. S. GEOLOGICAL SURVEY

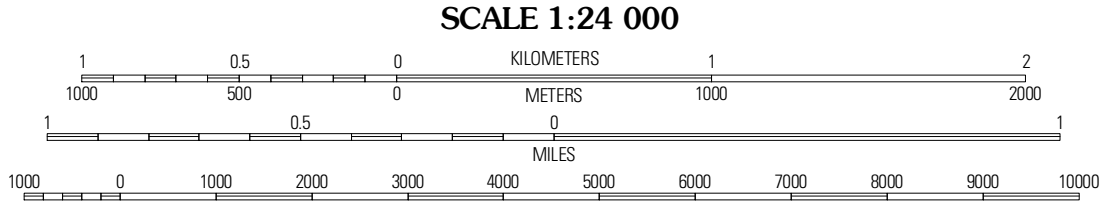
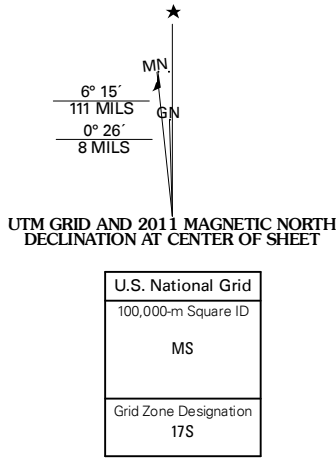


SARDIS QUADRANGLE  
GEORGIA  
7.5-MINUTE SERIES

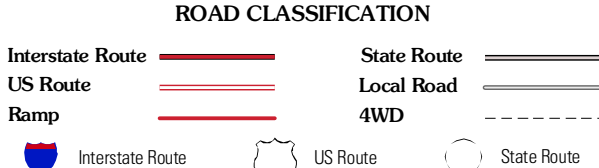
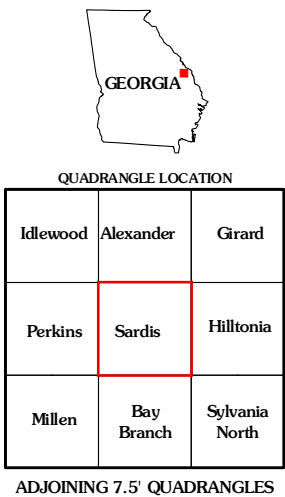


Produced by the United States Geological Survey  
North American Datum of 1983 (NAD83)  
World Geodetic System of 1984 (WGS84). Projection and  
1 000-meter grid: Universal Transverse Mercator, Zone 17S  
10 000-foot ticks: Georgia Coordinate System of 1983  
(east zone)

Imagery.....NAIP, August 2009  
Roads.....©2006-2010 Tele Atlas  
Names.....GNIS, 2009  
Hydrography.....National Hydrography Dataset, 2009  
Contours.....National Elevation Dataset, 2008



CONTOUR INTERVAL 10 FEET  
NORTH AMERICAN VERTICAL DATUM OF 1988  
This map was produced to conform with version 0.5.10 of the  
draft USGS Standards for 7.5-Minute Quadrangle Maps.  
A metadata file associated with this product is draft version 0.5.11



SARDIS, GA  
2011