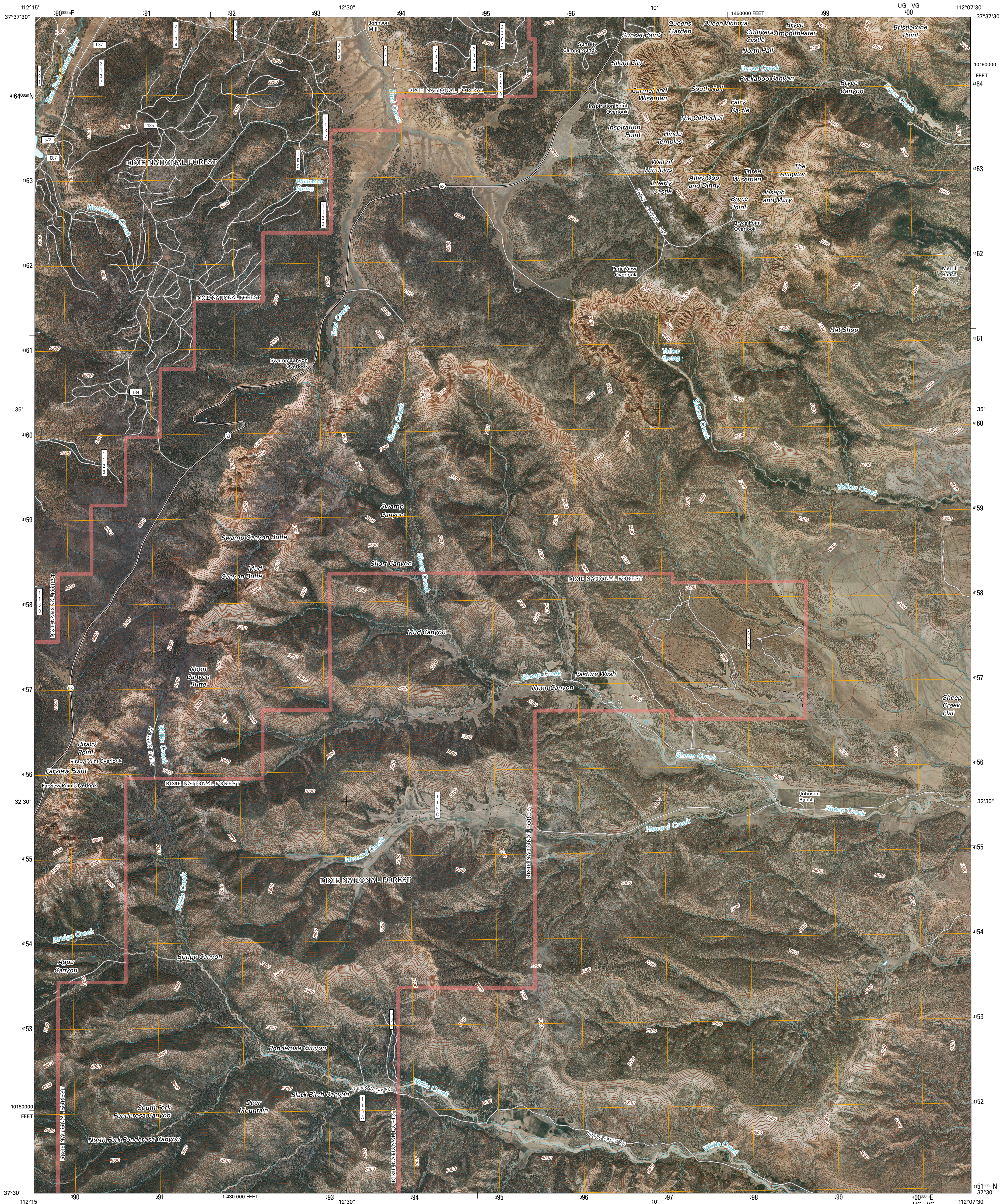




U.S. DEPARTMENT OF THE INTERIOR
U. S. GEOLOGICAL SURVEY

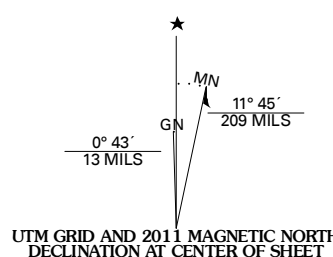


BRYCE POINT QUADRANGLE
UTAH
7.5-MINUTE SERIES

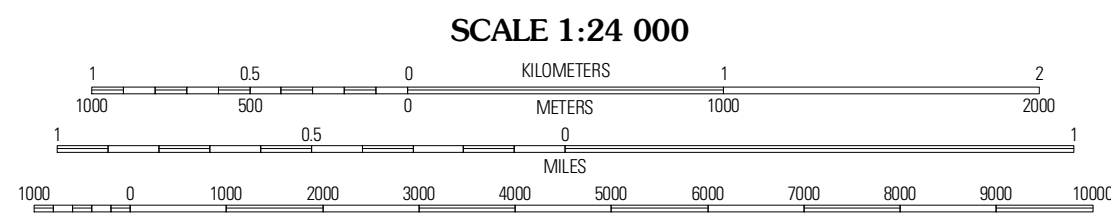


Produced by the United States Geological Survey
North American Datum of 1983 (NAD83)
World Geodetic System of 1984 (WGS84). Projection and
1 000-meter grid: Universal Transverse Mercator, Zone 12S
10 000-foot ticks: Utah Coordinate System of 1983
(south zone)

Imagery.....NAP, August 2009
Roads.....©2006-2010 Tele Atlas
Roads within US Forest Service Lands.....FS Topo Data
with limited Forest Service updates, 2009
Names.....GNIS, 2009
Hydrography.....National Hydrography Dataset, 2009
Contours.....National Elevation Dataset, 1999



U.S. National Grid
100,000m Square ID
UG VG
Grid Zone Designation
12S



CONTOUR INTERVAL 40 FEET
NORTH AMERICAN VERTICAL DATUM OF 1988

This map was produced to conform with version 0.5.10 of the
draft USGS Standards for 7.5-Minute Quadrangle Maps.
A metadata file associated with this product is draft version 0.5.13

QUADRANGLE LOCATION		
Wilson Peak	Bryce Canyon	Tropic Canyon
Tropic Reservoir	Bryce Point	Cannonville
Podunk Creek	Rainbow Point	Bull Valley Gorge

ADJOINING 7.5 QUADRANGLES

ROAD CLASSIFICATION			
Interstate Route	State Route	US Route	Local Road
Ramp	4WD	FS Primary Route	FS Passenger Route
FS Primary Route	FS Passenger Route	FS High Clearance Route	FS High Clearance Route

Check with local Forest Service unit
for current travel conditions and restrictions.

BRYCE POINT, UT
2011