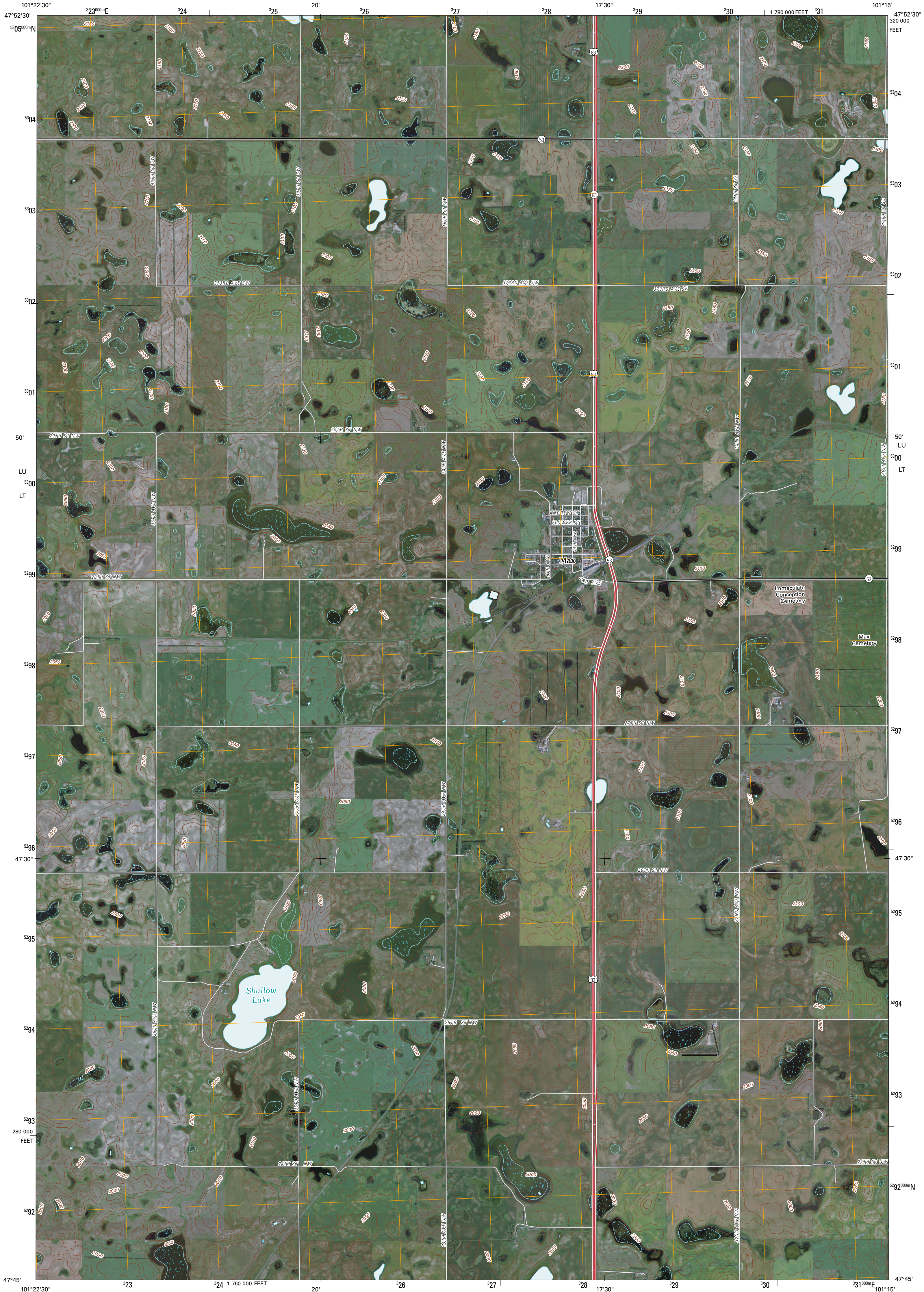




U.S. DEPARTMENT OF THE INTERIOR
U. S. GEOLOGICAL SURVEY



MAX QUADRANGLE
NORTH DAKOTA
7.5-MINUTE SERIES

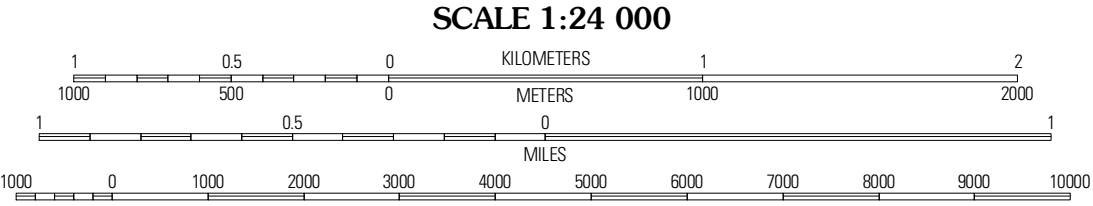


Produced by the United States Geological Survey
North American Datum of 1983 (NAD83)
World Geodetic System of 1984 (WGS84), Projection and
1 000-meter grid; Universal Transverse Mercator, Zone 14T
10 000-foot ticks; North Dakota Coordinate System of 1983
(north zone)

Imagery.....NAIP, August 2009
Roads.....©2006-2010 Tele Atlas
Names.....GNIS, 2009
Hydrography.....National Hydrography Dataset, 2009
Contours.....National Elevation Dataset, 2008

UTM GRID AND 2011 MAGNETIC NORTH
DECLINATION AT CENTER OF SHEET

U.S. National Grid
100,000m Square ID
LU
UT
Grid Zone Designation
MT



CONTOUR INTERVAL 10 FEET
NORTH AMERICAN VERTICAL DATUM OF 1988

This map was produced to conform with version 0.5.10 of the
draft USGS Standards for 7.5-Minute Quadrangle Maps.
A metadata file associated with this product is draft version 0.5.11



Rush Lake	Max NE	Benedict NW
Douglas East	Max	Benedict SW
Garrison	Garrison NE	Coleharbor NW

ADJOINING 7.5' QUADRANGLES

ROAD CLASSIFICATION		
Interstate Route	State Route	Local Road
US Route	US Route	4WD
Ramp		

MAX, ND
2011