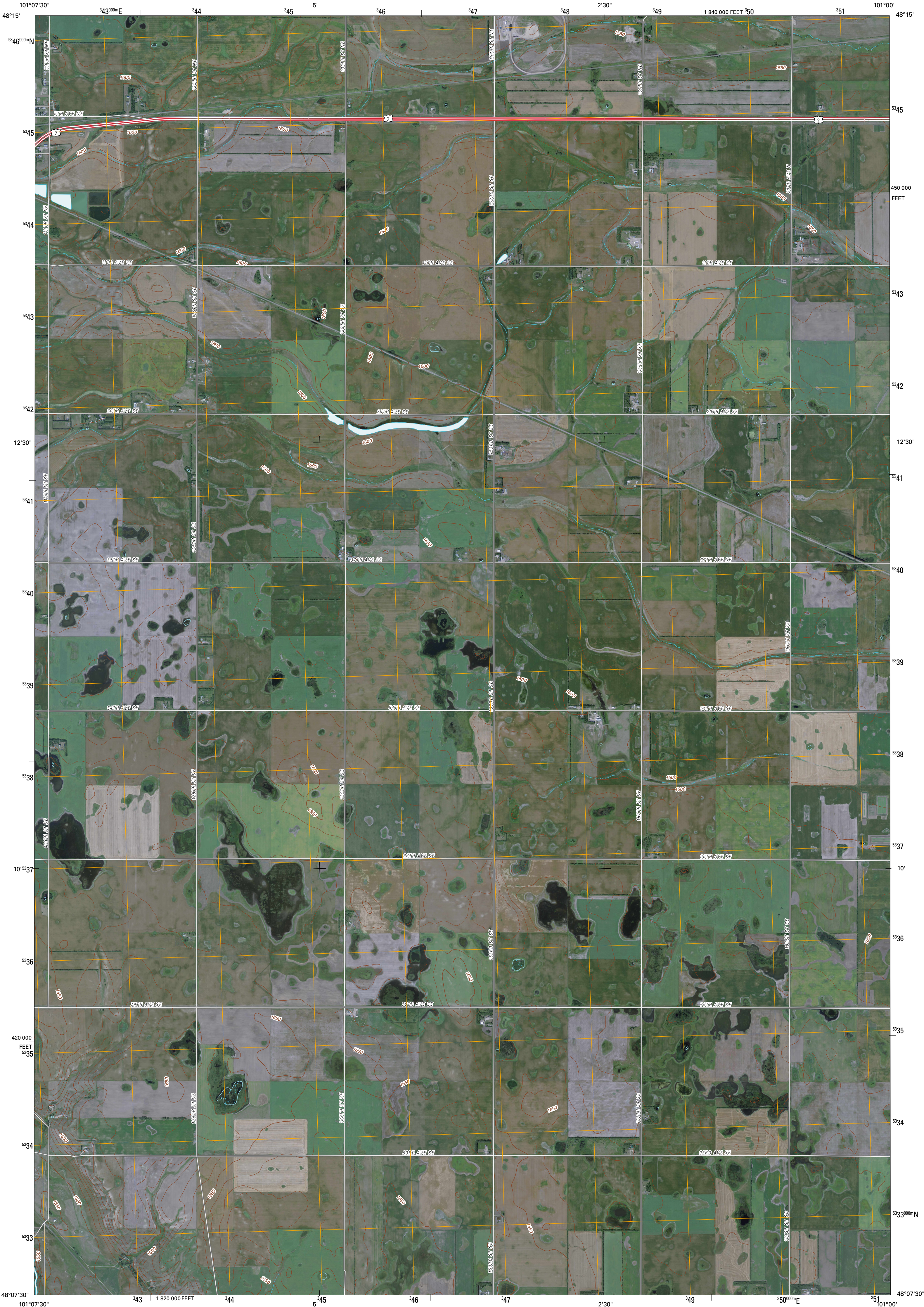




U.S. DEPARTMENT OF THE INTERIOR
U. S. GEOLOGICAL SURVEY

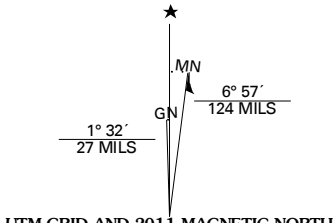


SAWYER NE QUADRANGLE
NORTH DAKOTA
7.5-MINUTE SERIES

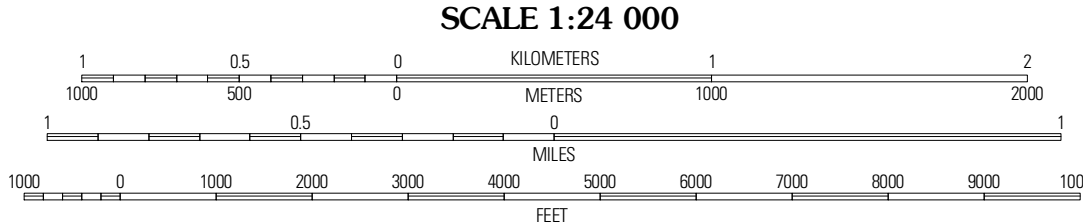


Produced by the United States Geological Survey
North American Datum of 1983 (NAD83)
World Geodetic System of 1984 (WGS84) Projection and
1 000-meter grid: Universal Transverse Mercator, Zone 14U
10 000-foot ticks: North Dakota Coordinate System of 1983
(north zone)

Imagery.....N.A.P., August 2009
Roads.....©2006-2010 Tele Atlas
Names.....GNIS, 2009
Hydrography.....National Hydrography Dataset, 2009
Contours.....National Elevation Dataset, 2008



U.S. National Grid
100,000-m Square ID
1U
Grid Zone Designation
14U



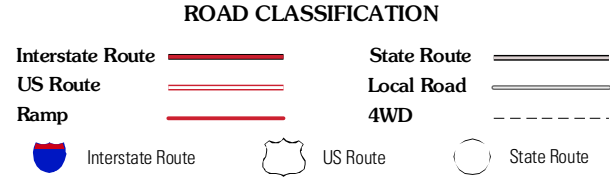
CONTOUR INTERVAL 10 FEET
NORTH AMERICAN VERTICAL DATUM OF 1988

This map was produced to conform with version 0.5.10 of the
draft USGS Standards for 7.5-Minute Quadrangle Maps.
A metadata file associated with this product is draft version 0.5.11



Deering SW	Deering SE	Grandville SW
Surrey	Sawyer NE	Norwich
Sawyer SW	Sawyer	Velva

ADJOINING 7.5' QUADRANGLES



SAWYER NE, ND
2011