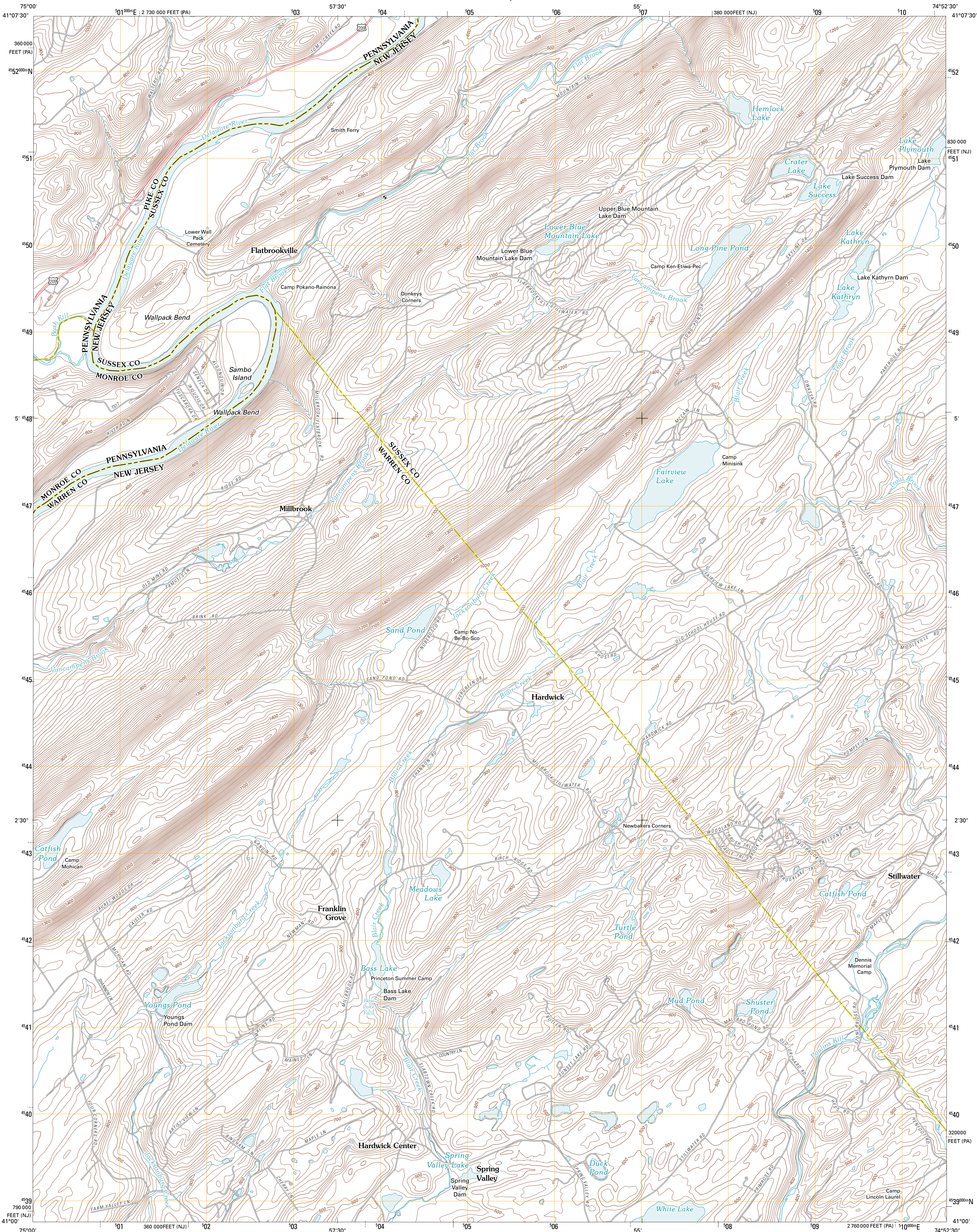




U.S. DEPARTMENT OF THE INTERIOR
U. S. GEOLOGICAL SURVEY

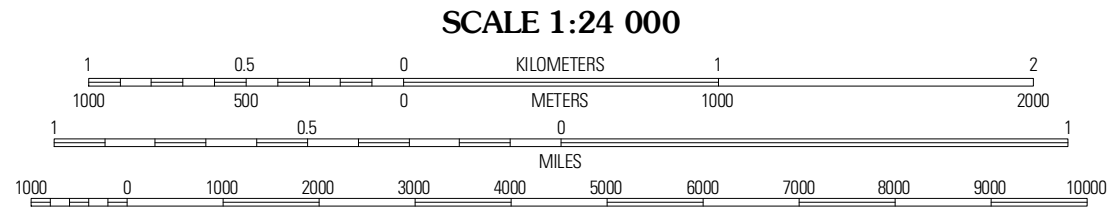
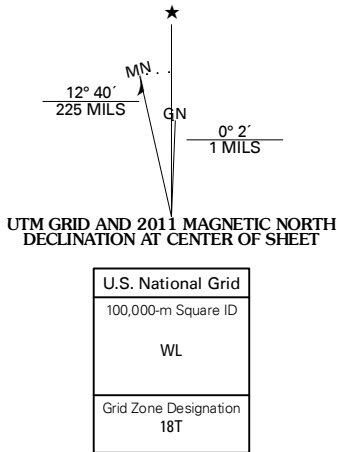


FLATBROOKVILLE QUADRANGLE
NEW JERSEY-PENNSYLVANIA
7.5-MINUTE SERIES

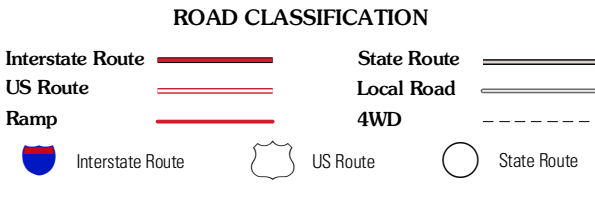
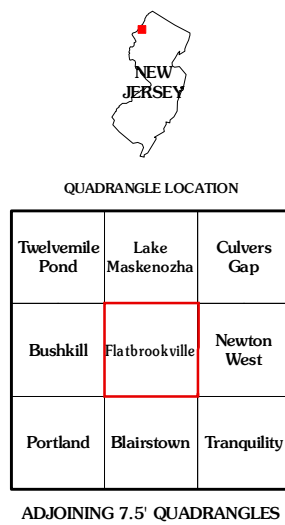


Produced by the United States Geological Survey
North American Datum of 1983 (NAD83)
World Geodetic System of 1984 (WGS84). Projection and
1 000-meter grid: Universal Transverse Mercator, Zone 18T
10 000-foot ticks: New Jersey Coordinate System of 1983,
Pennsylvania Coordinate System of 1983 (north zone)

Imagery...State of New Jersey, January 2007 - January 2008
Other Imagery provided by DE, NY, PA
Roads.....©2006-2010 Tide Atlas
Names.....GNIS, 2010
Hydrography.....National Hydrography Dataset, 2007
Contours.....National Elevation Dataset, 2000
Boundaries.....Census, IBWC, IBC, USGS, 1972 - 2010



CONTOUR INTERVAL 20 FEET
NORTH AMERICAN VERTICAL DATUM OF 1988
This map was produced to conform with version 0.5.10
of the USGS US Topo Product Standard.
A metadata file associated with this product is draft version 0.5.15.NJ



FLATBROOKVILLE, NJ-PA
2011