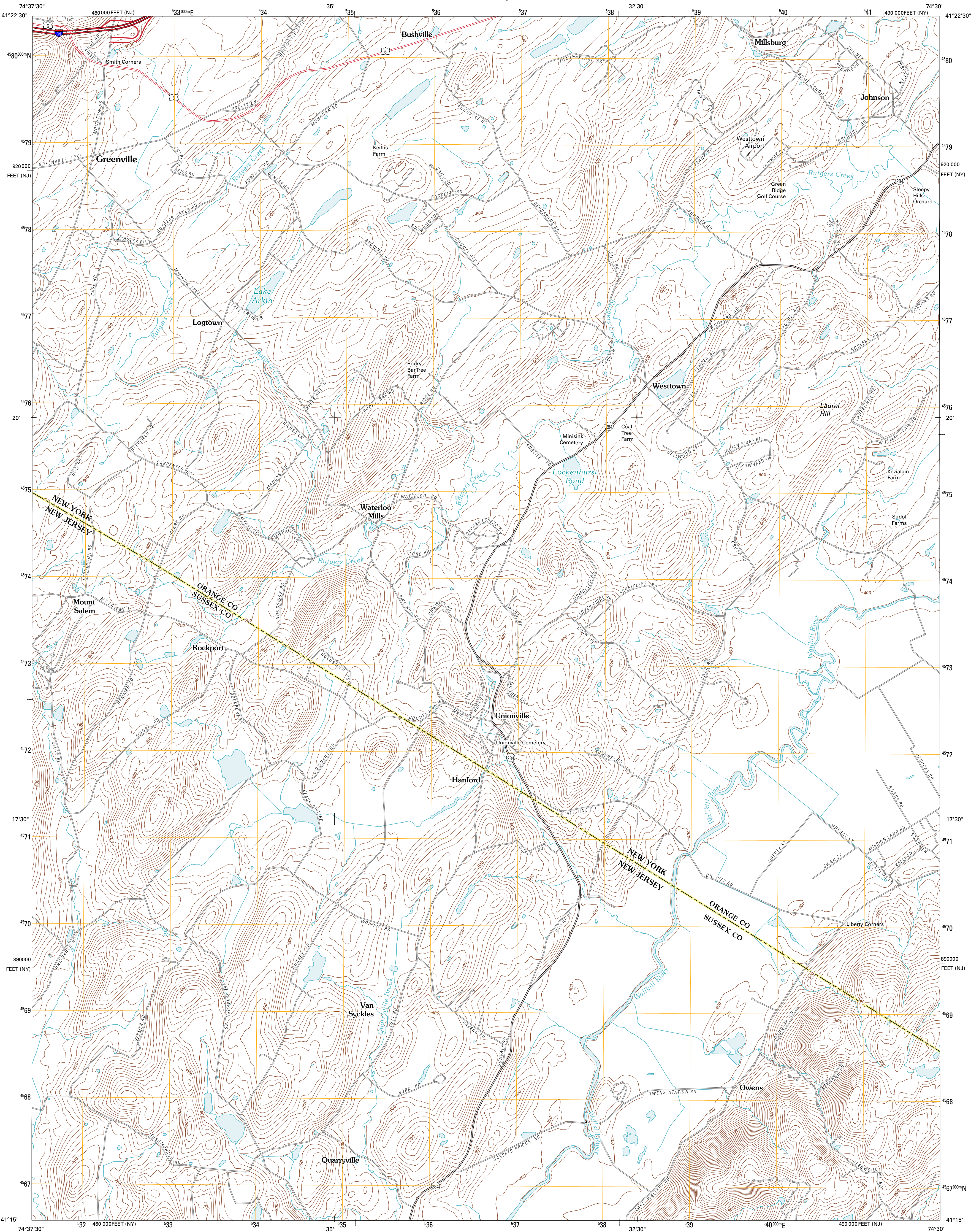




U.S. DEPARTMENT OF THE INTERIOR  
U. S. GEOLOGICAL SURVEY



UNIONVILLE QUADRANGLE  
NEW YORK-NEW JERSEY  
7.5-MINUTE SERIES

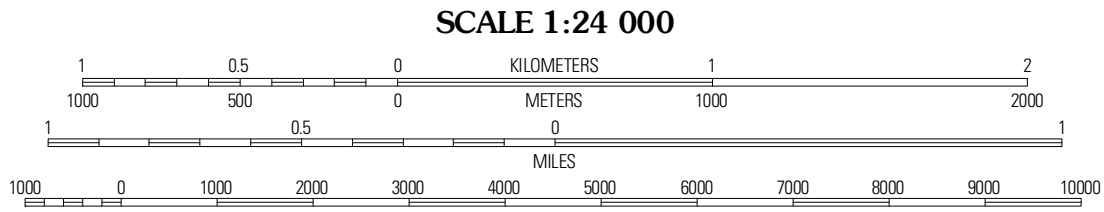


Produced by the United States Geological Survey  
North American Datum of 1983 (NAD83)  
World Geodetic System of 1984 (WGS84). Projection and  
1 000-meter grid: Universal Transverse Mercator, Zone 18T  
10 000-foot ticks: New York Coordinate System of 1983  
(east zone), New Jersey Coordinate System of 1983

Imagery.....State of New Jersey, January 2007  
Other Imagery provided by DE, NY, PA  
Roads.....©2006-2010 Tele Atlas  
Names.....GNIS, 2010  
Hydrography.....National Hydrography Dataset, 2007  
Contours.....National Elevation Dataset, 2000  
Boundaries.....Census, IBWC, IBC, USGS, 1972 - 2010

UTM GRID AND 2011 MAGNETIC NORTH  
DECLINATION AT CENTER OF SHEET

U.S. National Grid 100,000-m Square ID
WL
Grid Zone Designation 18T



CONTOUR INTERVAL 20 FEET  
NORTH AMERICAN VERTICAL DATUM OF 1988

This map was produced to conform with version 0.5.10  
of the USGS US Topo Product Standard.  
A metadata file associated with this product is draft version 0.5.15.NJ



Port Jervis North	Ossipee	Middletown
Port Jervis South	Unionville	Pine Island
Branchville	Hamburg	Wawayanda

ROAD CLASSIFICATION  
Interstate Route  
US Route  
Ramp  
State Route  
Local Road  
4WD  
Interstate Route  
US Route  
State Route

UNIONVILLE, NY-NJ  
2011