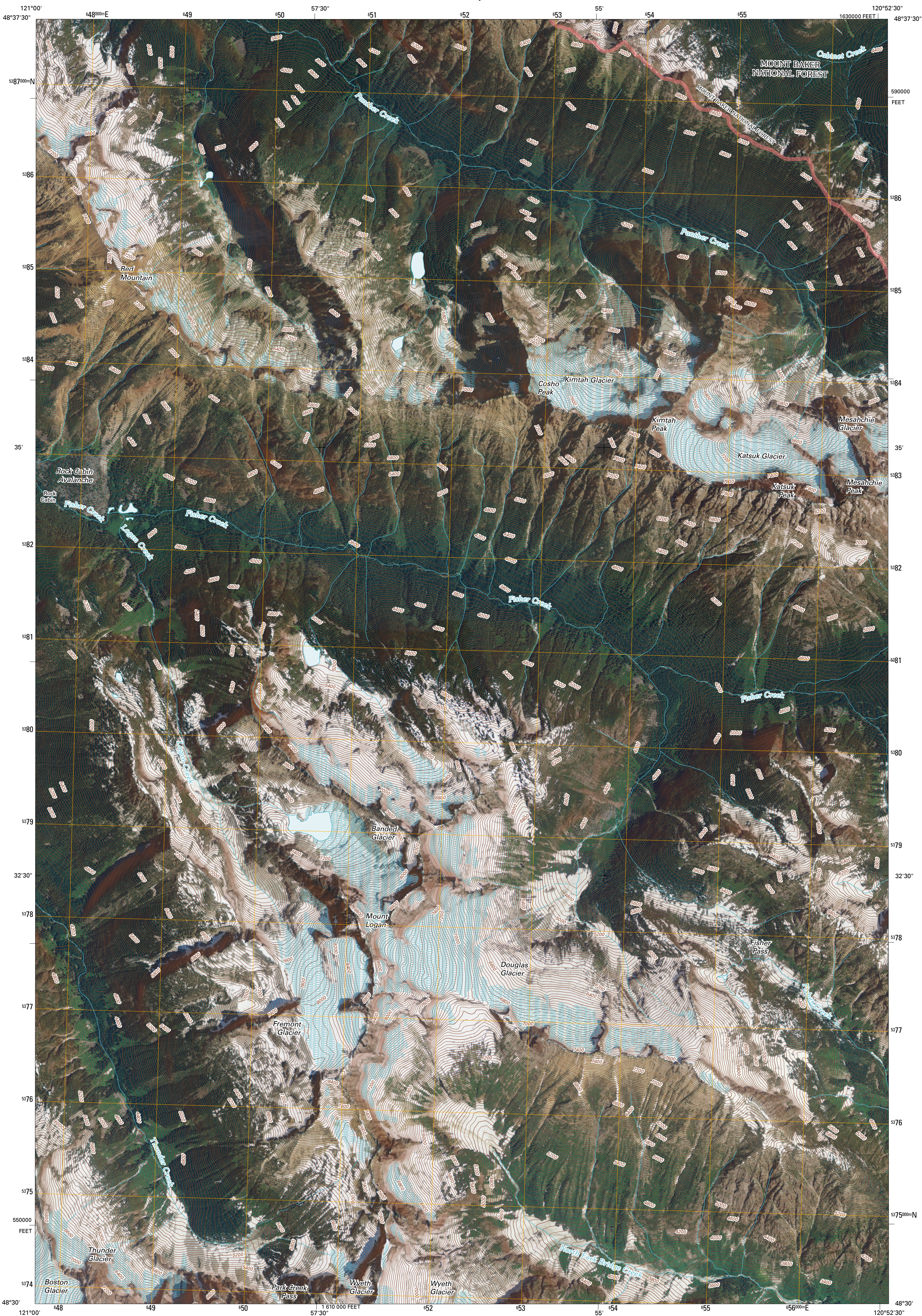




U.S. DEPARTMENT OF THE INTERIOR  
U. S. GEOLOGICAL SURVEY



MOUNT LOGAN QUADRANGLE  
WASHINGTON  
7.5-MINUTE SERIES

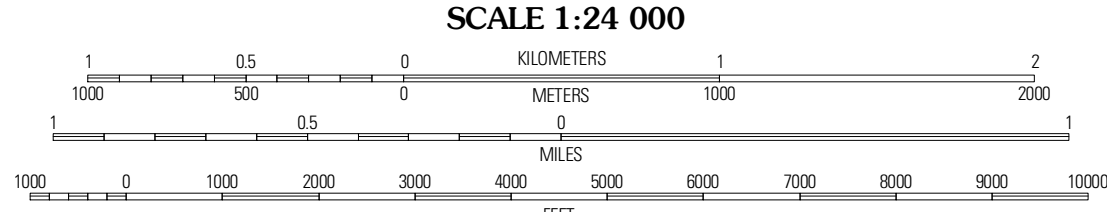


Produced by the United States Geological Survey  
North American Datum of 1983 (NAD83)  
World Geodetic System of 1984 (WGS84), Projection and  
1 000-meter grid: Universal Transverse Mercator, Zone 10U  
10 000-foot ticks: Washington Coordinate System of 1983  
(north zone)

Imagery.....NAIP, July 2009 - August 2009  
Roads.....©2006-2010 Tele Atlas  
Roads within US Forest Service Lands.....FS Topo Data  
with limited Forest Service updates, 2009  
Names.....GNIS, 2009  
Hydrography.....National Hydrography Dataset, 2009  
Contours.....National Elevation Dataset, 1999

UTM GRID AND 2011 MAGNETIC NORTH  
DECLINATION AT CENTER OF SHEET  
1° 33' N  
27 MILS

U.S. National Grid  
100 000-m Square ID  
FJ  
Grid Zone Designation  
10U



CONTOUR INTERVAL 40 FEET  
NORTH AMERICAN VERTICAL DATUM OF 1988

This map was produced to conform with version 0.5.10 of the  
draft USGS Standards for 7.5-Minute Quadrangle Maps.  
A metadata file associated with this product is draft version 0.5.13



QUADRANGLE LOCATION		
Ross Dam	Crater Mountain	Azurite Peak
Forbidden Peak	Mount Logan	Mount Arrows
Cascade Pass	Goode Mountain	McGregor Mountain

ADJOINING 7.5' QUADRANGLES

**ROAD CLASSIFICATION**

Interstate Route	State Route
US Route	Local Road
Ramp	4WD

Legend symbols for road types: Interstate Route (thick red line), US Route (red line), Ramp (red line with blue triangle), State Route (thin red line), Local Road (black line), 4WD (dashed black line).

Legend symbols for other features: FS Primary Route (blue line), FS Passenger Route (blue line with cross-ticks), FS High Clearance Route (blue line with cross-ticks and a circle).

Check with local Forest Service unit  
for current travel conditions and restrictions.

MOUNT LOGAN, WA  
2011