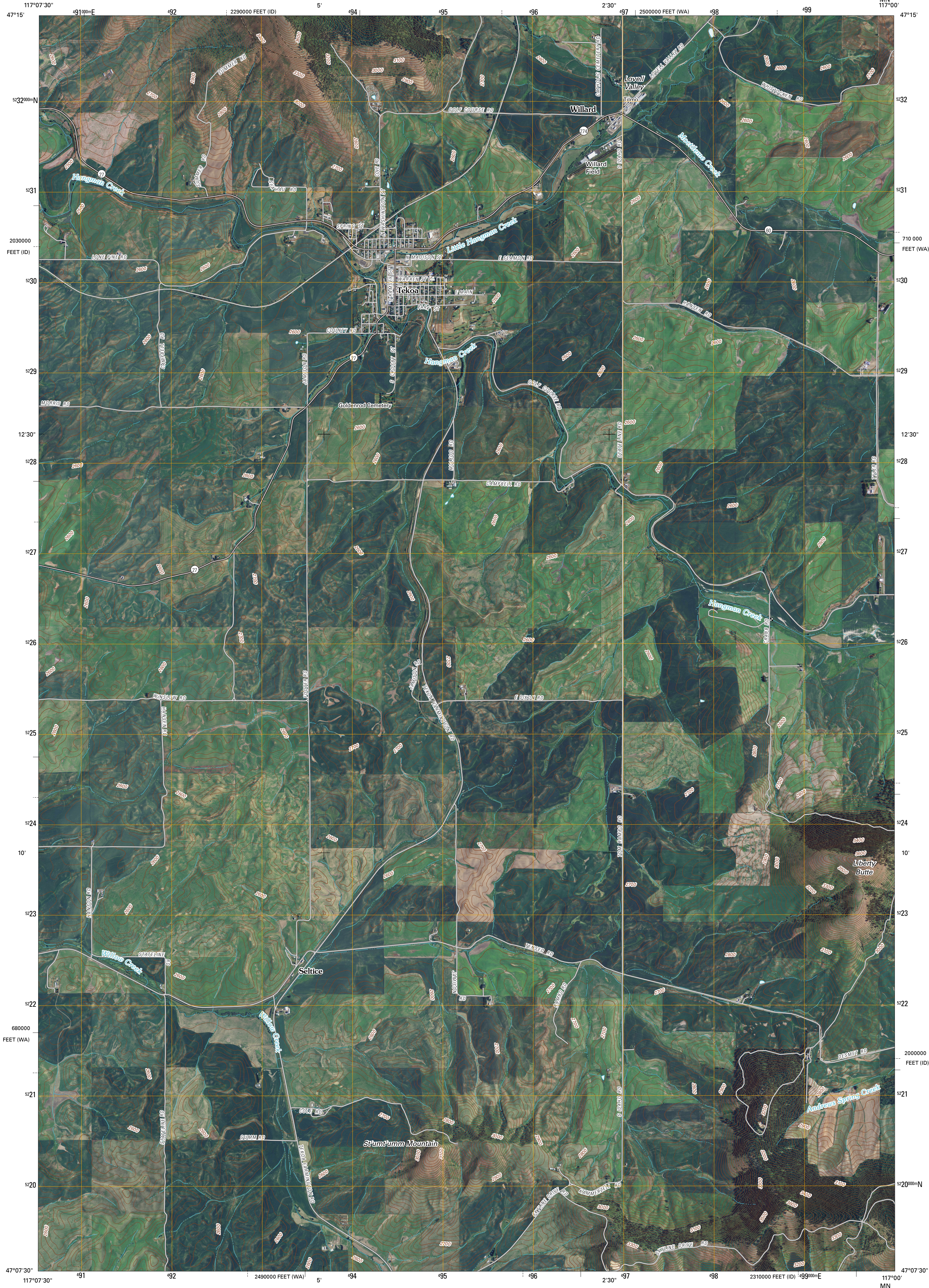




U.S. DEPARTMENT OF THE INTERIOR
U. S. GEOLOGICAL SURVEY

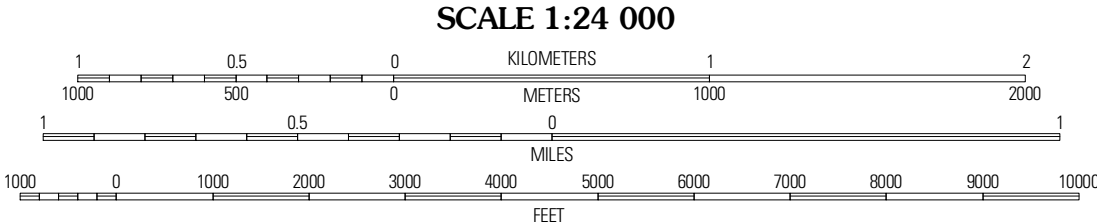
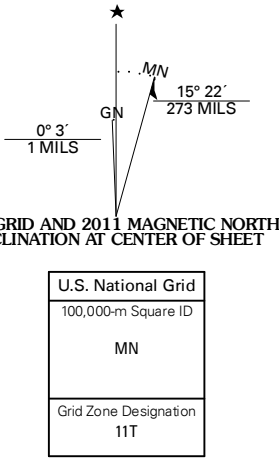


TEKOA QUADRANGLE
WASHINGTON-IDAHO
7.5-MINUTE SERIES



Produced by the United States Geological Survey
North American Datum of 1983 (NAD83)
World Geodetic System of 1984 (WGS84). Projection and
1 000-meter grid: Universal Transverse Mercator, Zone 11T
10 000-foot ticks: Washington Coordinate System of 1983
(south zone) and Idaho Coordinate System of 1983
(west zone)

Imagery.....NAIP, June 2009
Roads.....2006-2010 Tele Atlas
Names.....GNIS, 2009
Hydrography.....National Hydrography Dataset, 2009
Contours.....National Elevation Dataset, 2001



CONTOUR INTERVAL 20 FEET
NORTH AMERICAN VERTICAL DATUM OF 1988

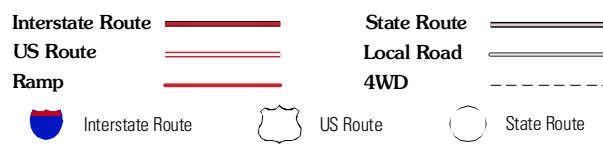
This map was produced to conform with version 0.5.10 of the
draft USGS Standards for 7.5-Minute Quadrangle Maps.
A metadata file associated with this product is draft version 0.5.11



| QUADRANGLE LOCATION | | |
|---------------------|----------------|------------------|
| Latah | Tekoa Mountain | Plummer |
| Oakesdale | Tekoa | Tensed |
| Garfield | Farmington | Mission Mountain |

ADJOINING 7.5 QUADRANGLES

ROAD CLASSIFICATION



TEKOA, WA-ID
2011