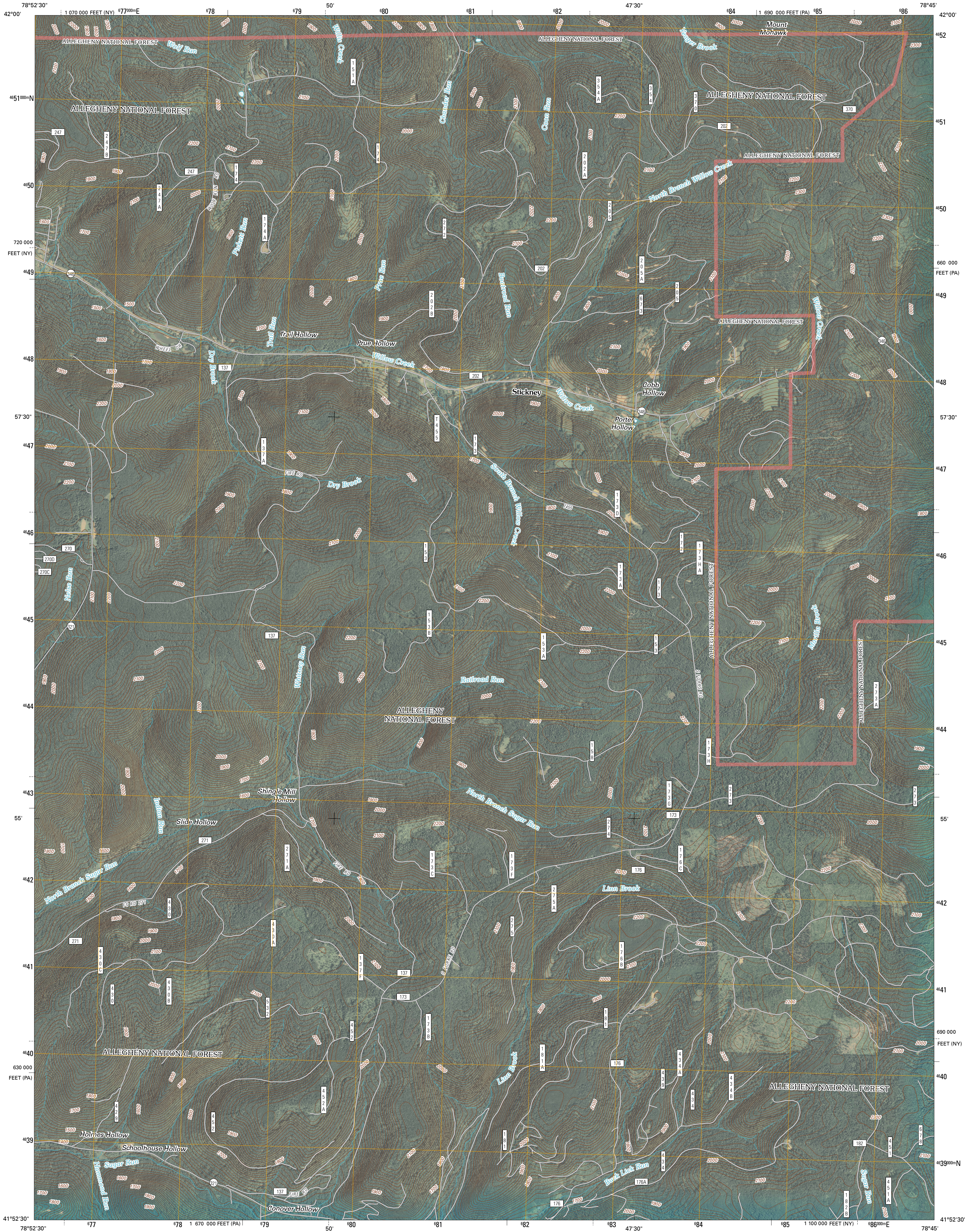




U.S. DEPARTMENT OF THE INTERIOR  
U. S. GEOLOGICAL SURVEY

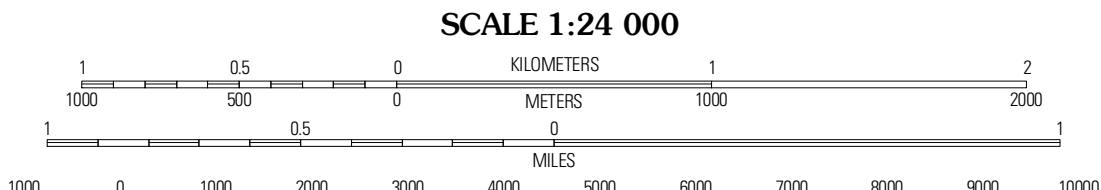
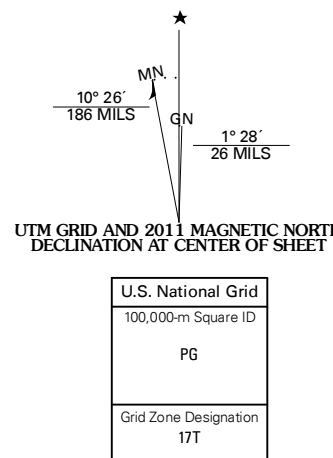


STICKNEY QUADRANGLE  
PENNSYLVANIA-NEW YORK  
7.5-MINUTE SERIES



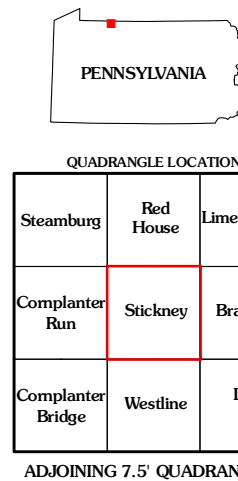
Produced by the United States Geological Survey  
North American Datum of 1983 (NAD83)  
World Geodetic System of 1984 (WGS84). Projection and  
1 000-meter grid: Universal Transverse Mercator, Zone 17T  
10 000-foot ticks: Pennsylvania Coordinate System of 1983  
(north zone)  
and New York Coordinate System of 1983  
(west zone)

Imagery:.....NAP, August 2008  
Roads:.....2006-2010 Tele Atlas  
Roads within US Forest Service Lands:.....FS Topo Data  
with limited Forest Service updates, 2009  
Names:.....GNS, 2009  
Hydrography:.....National Hydrography Dataset, 2008  
Contours:.....National Elevation Dataset, 2000



CONTOUR INTERVAL 20 FEET  
NORTH AMERICAN VERTICAL DATUM OF 1988

This map was produced to conform with version 0.5.10 of the  
draft USGS Standards for 7.5-Minute Quadrangle Maps.  
A metadata file associated with this product is draft version 0.5.13



ROAD CLASSIFICATION  
Interstate Route  
US Route  
Ramp  
FS Primary Route  
State Route  
Local Road  
4WD  
US Route  
FS Passenger Route  
FS High Clearance Route  
Check with local Forest Service unit  
for current travel conditions and restrictions.

STICKNEY, PA-NY  
2011