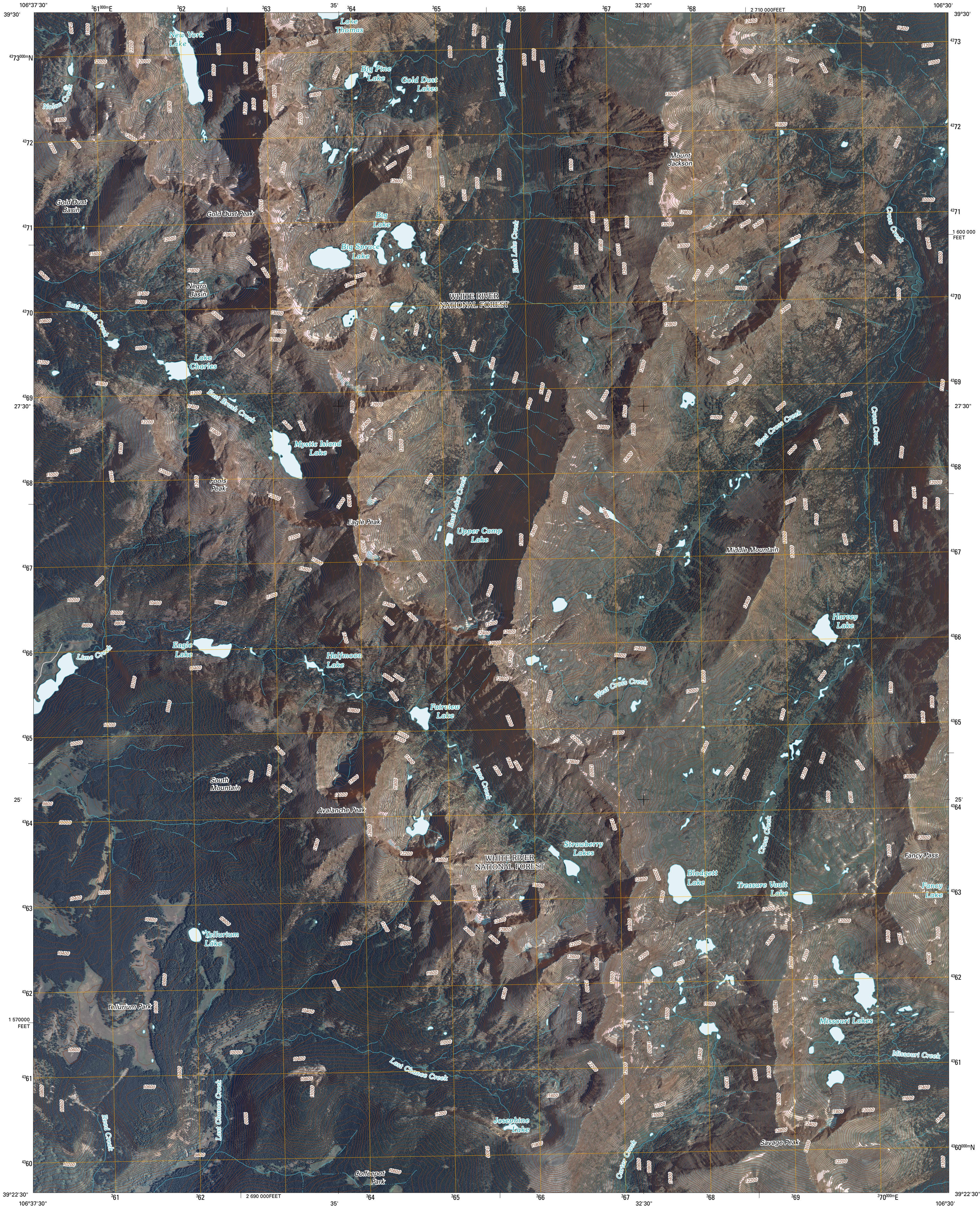




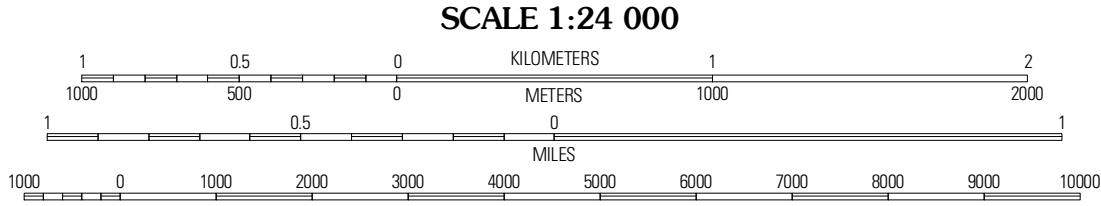
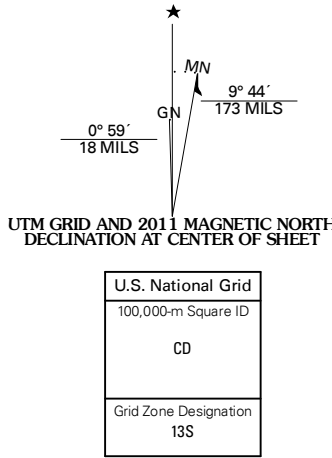
U.S. DEPARTMENT OF THE INTERIOR
U. S. GEOLOGICAL SURVEY



MOUNT JACKSON QUADRANGLE
COLORADO
7.5-MINUTE SERIES

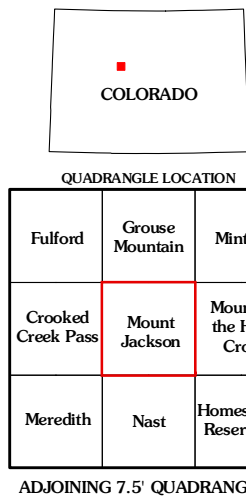


Produced by the United States Geological Survey
North American Datum of 1983 (NAD83)
Roads within US Forest Service Lands.....FS Topo Data
with limited Forest Service updates, 2009
Names.....National Hydrography Dataset, 2009
Contours.....National Elevation Dataset, 1999



CONTOUR INTERVAL 40 FEET
NORTH AMERICAN VERTICAL DATUM OF 1988

This map was produced to conform with version 0.5.10 of the
draft USGS Standards for 7.5-Minute Quadrangle Maps.
A metadata file associated with this product is draft version 0.5.13



ROAD CLASSIFICATION
Interstate Route
US Route
Ramp
State Route
Local Road
4WD
Check with local Forest Service unit
for current travel conditions and restrictions.

MOUNT JACKSON, CO
2011