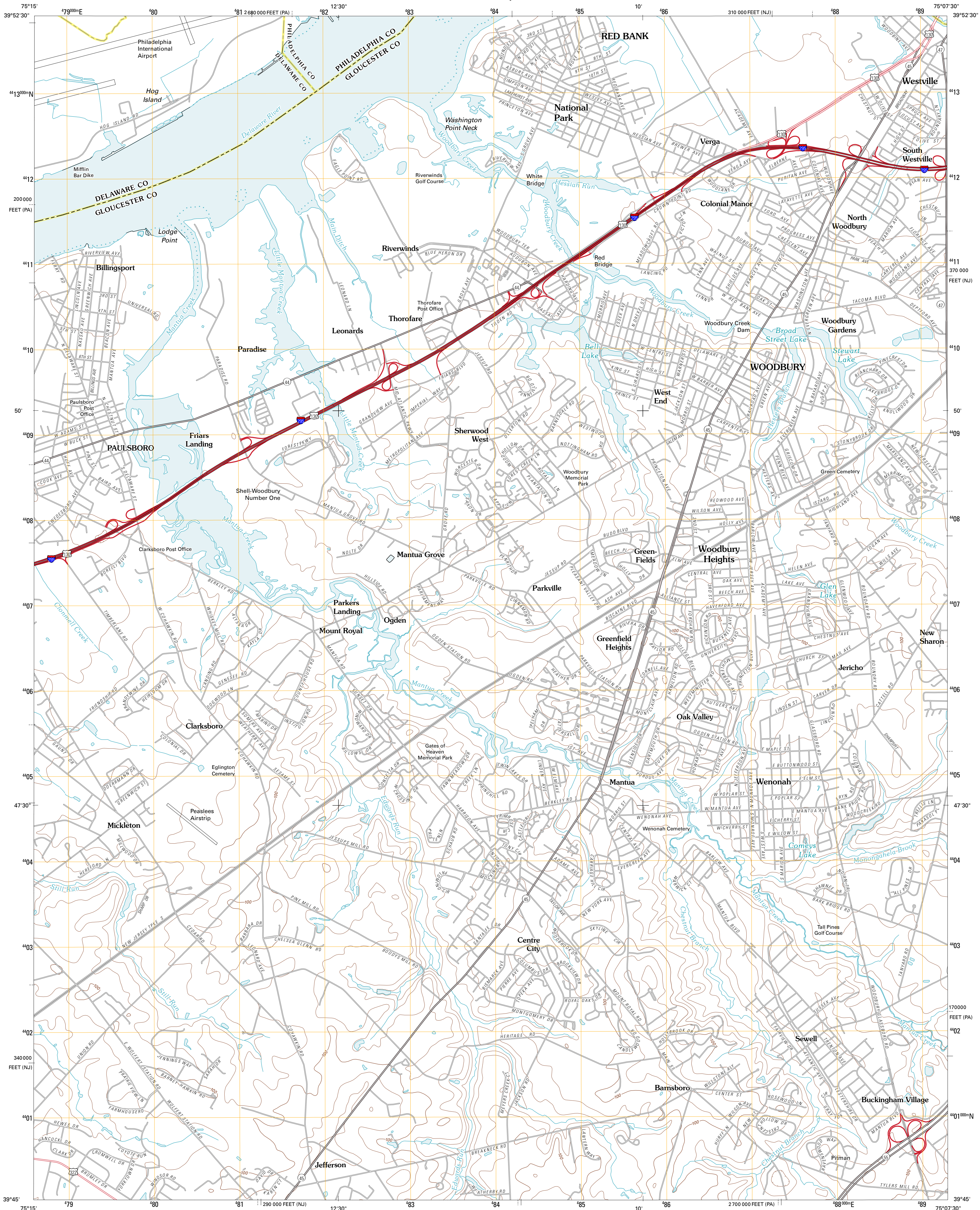




U.S. DEPARTMENT OF THE INTERIOR  
U. S. GEOLOGICAL SURVEY



WOODBURY QUADRANGLE  
NEW JERSEY-PENNSYLVANIA  
7.5-MINUTE SERIES

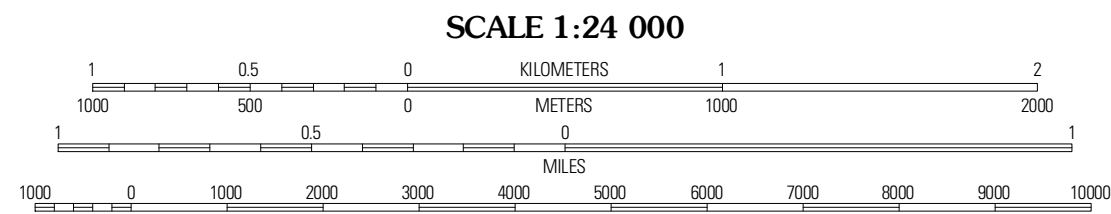


Produced by the United States Geological Survey  
North American Datum of 1983 (NAD83)  
World Geodetic System of 1984 (WGS84). Projection and  
1 000-meter grid: Universal Transverse Mercator, Zone 18S  
10 000-foot ticks: New Jersey Coordinate System of 1983,  
Pennsylvania Coordinate System of 1983 (south zone)

Imagery...State of New Jersey, January 2007 - January 2008  
Other imagery provided by DE, NY, PA  
Roads...©2006-2010 Tele Atlas  
Names...GNIS, 2010  
Hydrography...National Hydrography Dataset, 2007  
Contours...National Elevation Dataset, 2002  
Boundaries...Census, IBWC, IBC, USGS, 1972 - 2010

UTM GRID AND 2011 MAGNETIC NORTH  
DECLINATION AT CENTER OF SHEET

|                       |
|-----------------------|
| U.S. National Grid    |
| 100,000m Square ID    |
| VK                    |
| Grid Zone Designation |
| 18S                   |



CONTOUR INTERVAL 20 FEET  
NORTH AMERICAN VERTICAL DATUM OF 1988  
This map was produced to conform with version 0.5.10  
of the USGS US Topo Product Standard.  
A metadata file associated with this product is draft version 0.5.15.NJ



| QUADRANGLE LOCATION |              |             |
|---------------------|--------------|-------------|
| Lansdowne           | Philadelphia | Camden      |
| Bridgeport          | Woodbury     | Rummedale   |
| Woodstown           | Pitman West  | Pitman East |

| ROAD CLASSIFICATION |             |             |
|---------------------|-------------|-------------|
| Interstate Route    | State Route | Local Road  |
| Ramp                | 4WD         |             |
| Interstate Route    | US Route    | State Route |

WOODBURY, NJ-PA  
2011