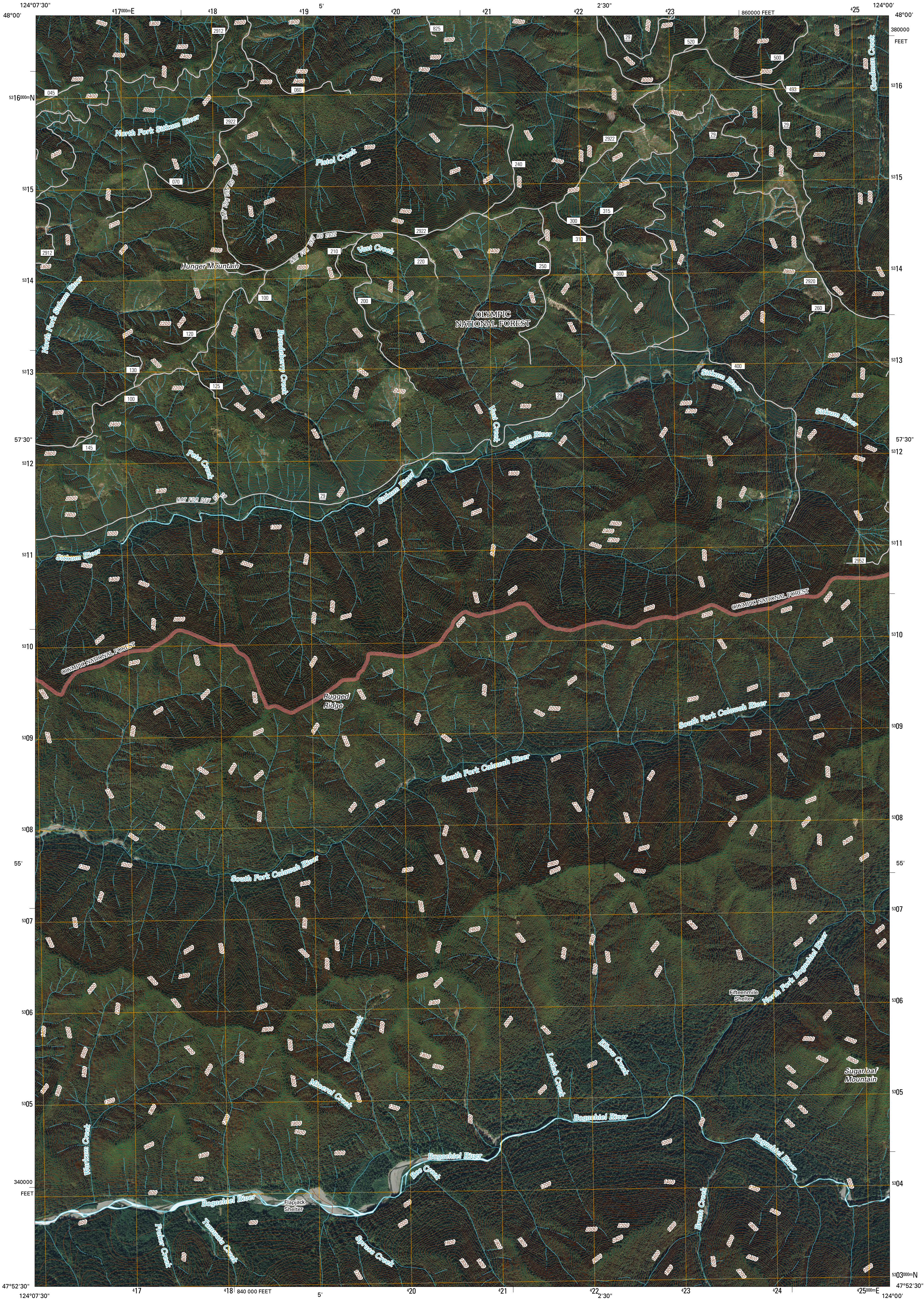




U.S. DEPARTMENT OF THE INTERIOR
U. S. GEOLOGICAL SURVEY

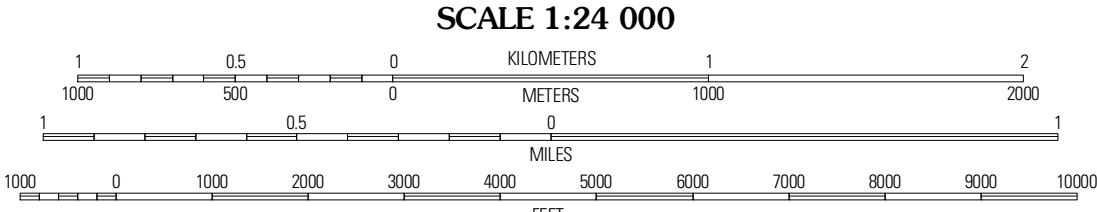
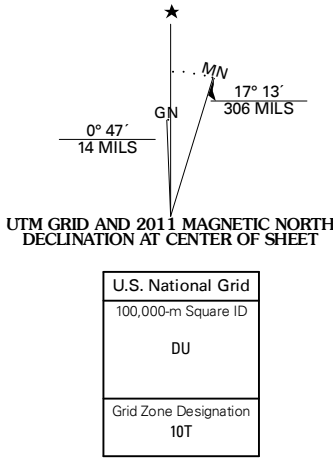


HUNGER MOUNTAIN QUADRANGLE
WASHINGTON
7.5-MINUTE SERIES



Produced by the United States Geological Survey
North American Datum of 1983 (NAD83)
World Geodetic System of 1984 (WGS84) Projection and
1 000-meter grid: Universal Transverse Mercator, Zone 10T
10 000-foot ticks: Washington Coordinate System of 1983
(north zone)

Imagery.....NAIP, August 2009 - September 2009
Roads.....2006-2010 Tele Atlas
Roads within US Forest Service Lands.....FS Topo Data
with limited Forest Service updates, 2009
Name.....GNIS, 2009
Hydrography.....National Hydrography Dataset, 2009
Contours.....National Elevation Dataset, 1999



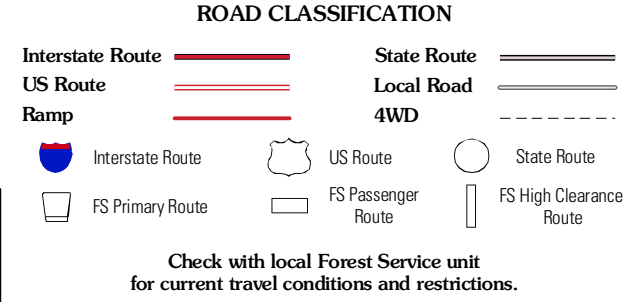
CONTOUR INTERVAL 40 FEET
NORTH AMERICAN VERTICAL DATUM OF 1988

This map was produced to conform with version 0.5.10 of the
draft USGS Standards for 7.5-Minute Quadrangle Maps.
A metadata file associated with this product is draft version 0.5.13



QUADRANGLE LOCATION		
Deadman Hill	Snyder Peak	Mount Muller
Indian Pass	Hunger Mountain	Slide Peak
Winfield Creek	Spruce Mountain	Owl Mountain

ADJOINING 7.5' QUADRANGLES



Check with local Forest Service unit
for current travel conditions and restrictions.

HUNGER MOUNTAIN, WA
2011