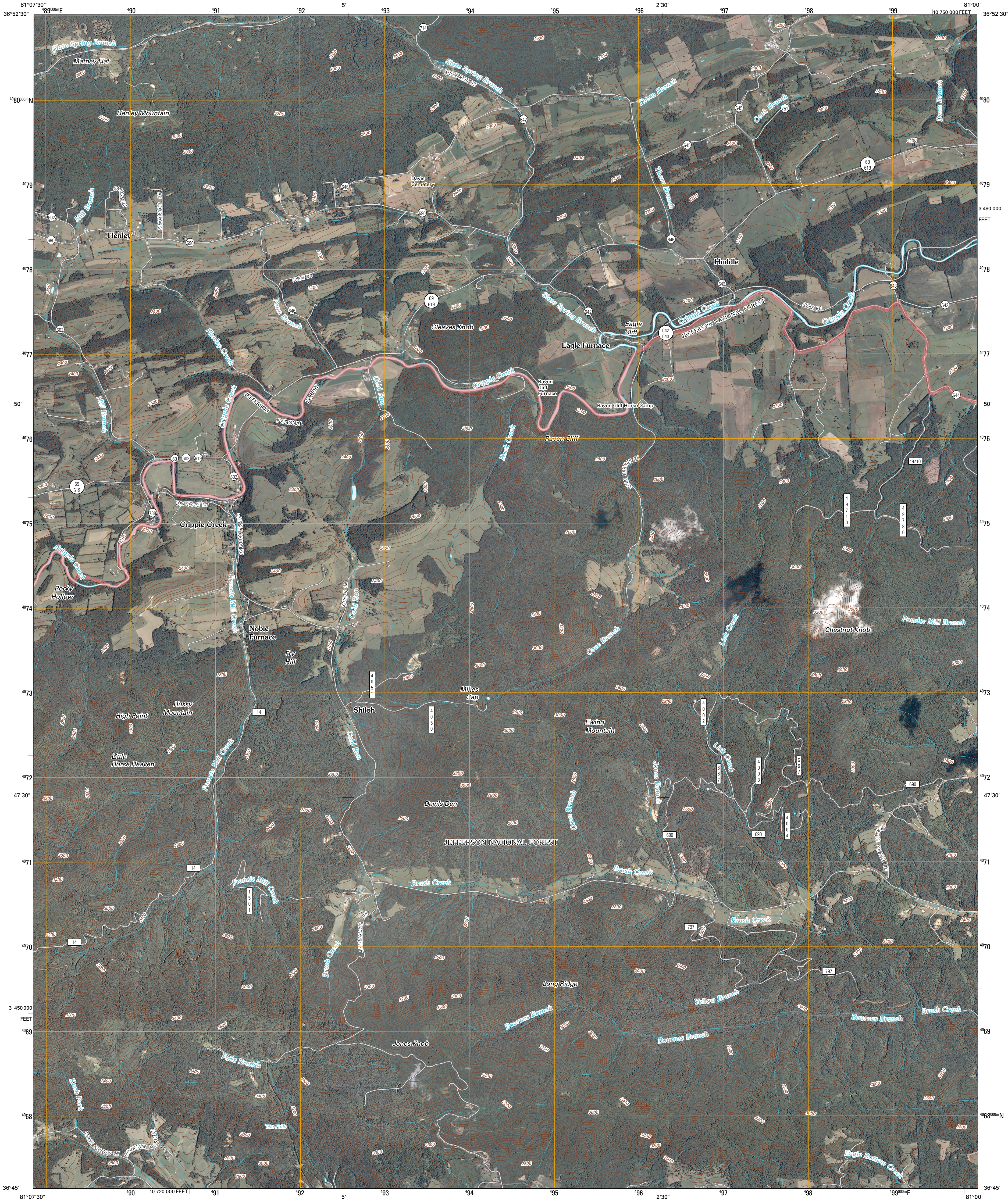




U.S. DEPARTMENT OF THE INTERIOR
U. S. GEOLOGICAL SURVEY

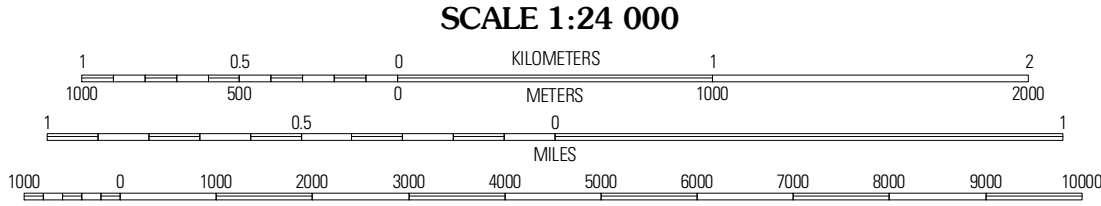
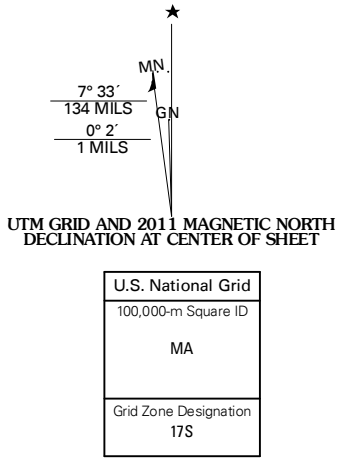


CRIPPLE CREEK QUADRANGLE
VIRGINIA
7.5-MINUTE SERIES



Produced by the United States Geological Survey
North American Datum of 1983 (NAD83)
World Geodetic System of 1984 (WGS84) Projection and
1 000-meter grid; Universal Transverse Mercator, Zone 17S
10 000-foot ticks; Virginia Coordinate System of 1983
(south zone)

Imagery.....NAIP, June 2009 - July 2009
Roads.....2006-2010 Tele Atlas
Roads within US Forest Service Lands.....FS Topo Data
with limited Forest Service updates, 2009
Names.....GNIS, 2009
Hydrography.....National Hydrography Dataset, 2009
Contours.....National Elevation Dataset, 2001



CONTOUR INTERVAL 40 FEET
NORTH AMERICAN VERTICAL DATUM OF 1988
This map was produced to conform with version 0.5.10 of the
draft USGS Standards for 7.5-Minute Quadrangle Maps.
A metadata file associated with this product is draft version 0.5.13



QUADRANGLE LOCATION		
Crocket	Wytheville	Max Meadows
Speedwell	Cripple Creek	Austinville
Elk Creek	Briarpatch Mountain	Galax

ROAD CLASSIFICATION
Interstate Route
US Route
Ramp
FS Primary Route
State Route
Local Road
4WD
FS Passenger Route
FS High Clearance Route
Check with local Forest Service unit
for current travel conditions and restrictions.

CRIPPLE CREEK, VA
2011