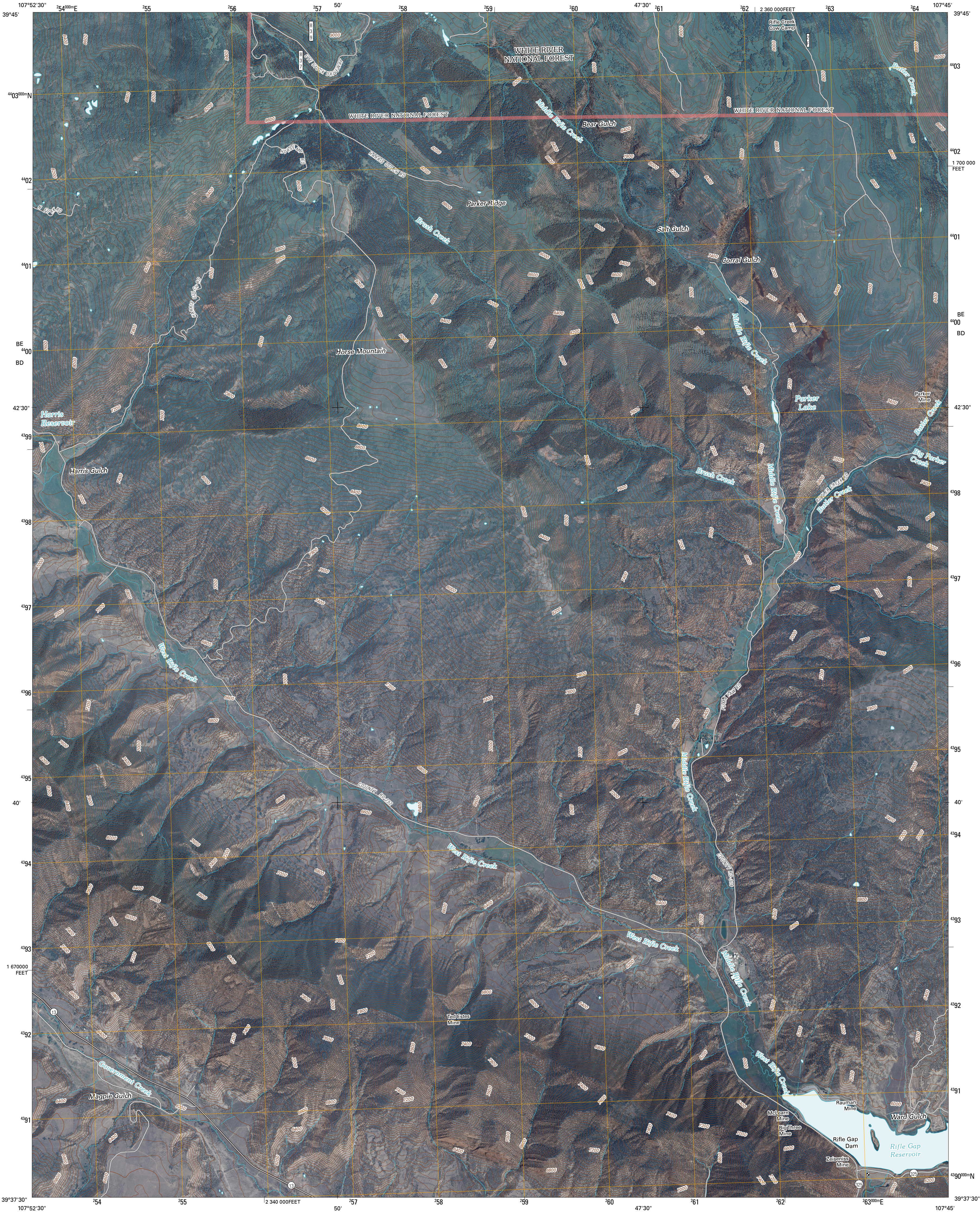




U.S. DEPARTMENT OF THE INTERIOR  
U. S. GEOLOGICAL SURVEY

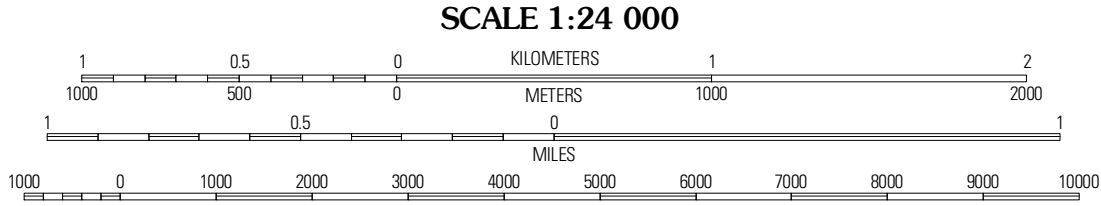
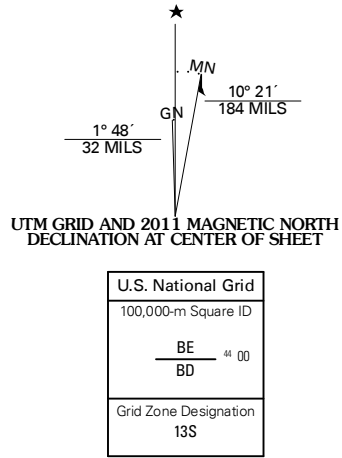


HORSE MOUNTAIN QUADRANGLE  
COLORADO  
7.5-MINUTE SERIES



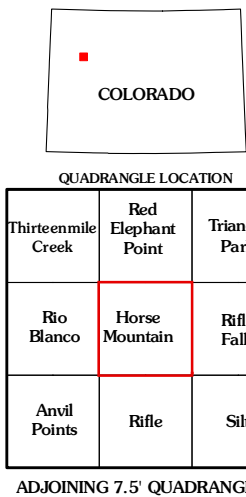
Produced by the United States Geological Survey  
North American Datum of 1983 (NAD83)  
World Geodetic System of 1984 (WGS84). Projection and  
1 000-meter grid: Universal Transverse Mercator, Zone 13S  
10 000-foot ticks: Colorado Coordinate System of 1983  
(central zone)

Imagery.....NAIP, July 2009  
Roads.....52006-2010 Tele Atlas  
Roads within US Forest Service Lands.....FS/Topo Data  
with limited Forest Service updates, 2009  
Names.....GNIS, 2009  
Hydrography.....National Hydrography Dataset, 2009  
Contours.....National Elevation Dataset, 2004



CONTOUR INTERVAL 40 FEET  
NORTH AMERICAN VERTICAL DATUM OF 1988

This map was produced to conform with version 0.5.10 of the  
draft USGS Standards for 7.5-Minute Quadrangle Maps.  
A metadata file associated with this product is draft version 0.5.13



**ROAD CLASSIFICATION**

Interstate Route	State Route
US Route	Local Road
Ramp	4WD

Check with local Forest Service unit  
for current travel conditions and restrictions.

HORSE MOUNTAIN, CO  
2011