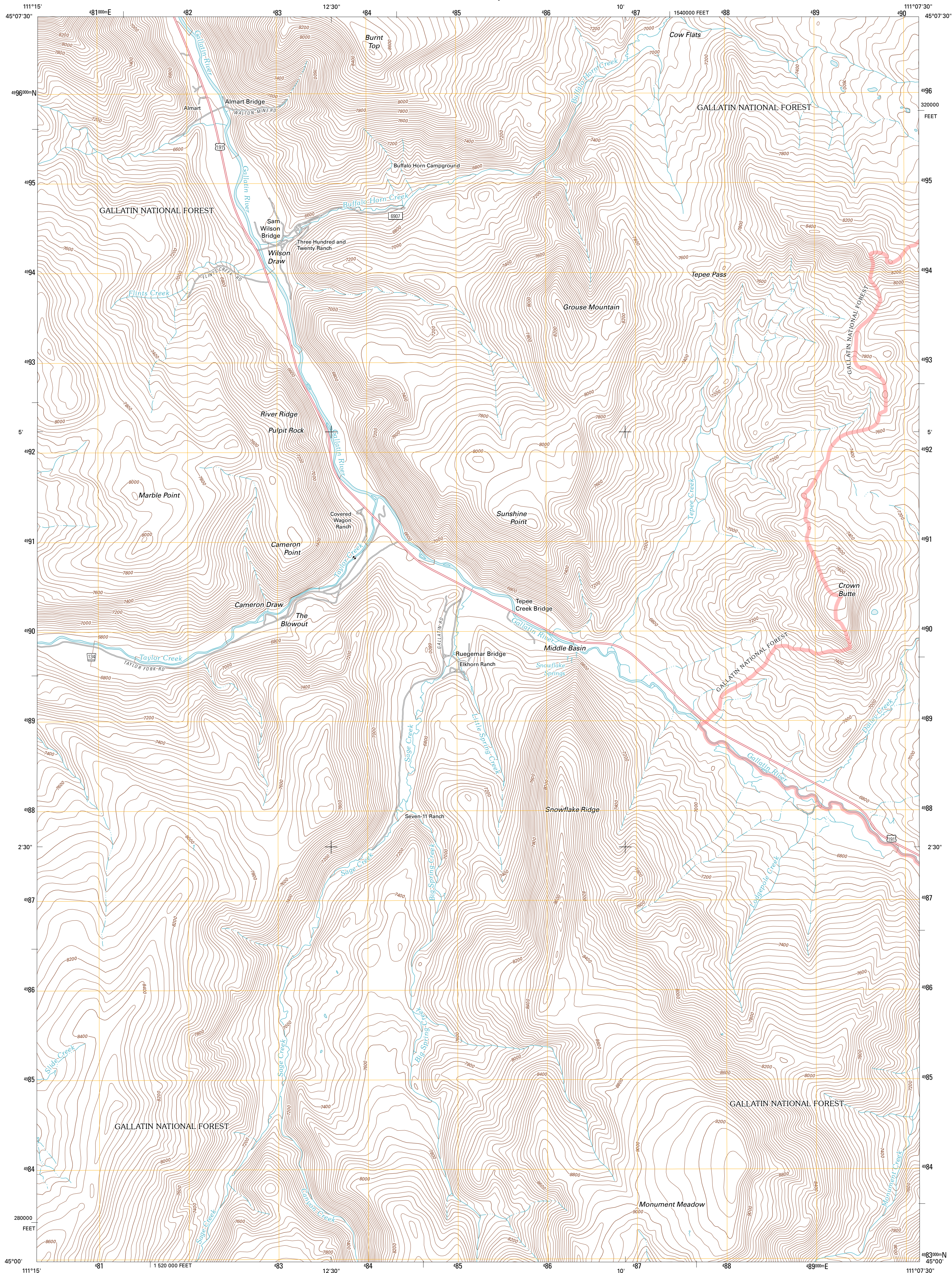




U.S. DEPARTMENT OF THE INTERIOR
U. S. GEOLOGICAL SURVEY

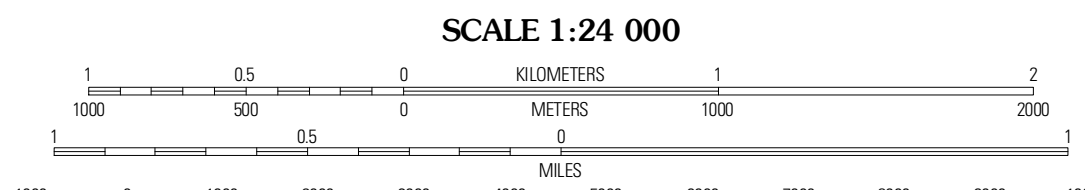
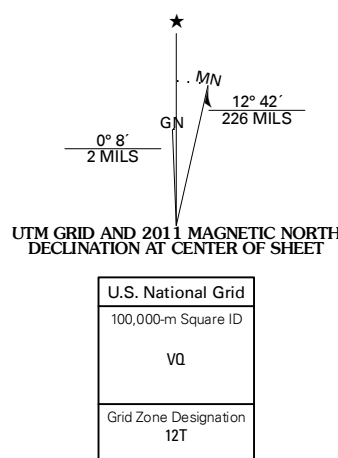


SUNSHINE POINT QUADRANGLE
MONTANA-GALLATIN CO.
7.5-MINUTE SERIES



Produced by the United States Geological Survey
North American Datum of 1983 (NAD83)
World Geodetic System of 1984 (WGS84), Projection and
1 000-meter grid: Universal Transverse Mercator, Zone 12T
10 000-foot ticks: Montana Coordinate System of 1983

Imagery.....NAP, June 2009
Roads.....©2006-2010 Tele Atlas
Roads within US Forest Service Lands.....FSTopo Data
with limited Forest Service updates, 2009
Names.....GNIS, 2010
Hydrography.....National Hydrography Dataset, 2009
Contours.....National Elevation Dataset, 2000
Boundaries.....Census, IBWC, IBC, USGS, 1972 - 2010



CONTOUR INTERVAL 40 FEET
NORTH AMERICAN VERTICAL DATUM OF 1988

This map was produced to conform with version 0.5.10
of the USGS US Topo Product Standard.
A metadata file associated with this product is draft version 0.5.16

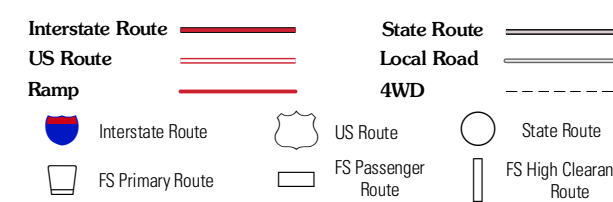


QUADRANGLE LOCATION

Quail Falls	Lone Indian Peak	Ramhorn Peak
Lincoln Mountain	Sunshine Point	Bq Horn Peak
Pika Point	Upper Tepee Basin	Diode Lake

ADJOINING 7.5 QUADRANGLES

ROAD CLASSIFICATION



Check with local Forest Service unit
for current travel conditions and restrictions.

SUNSHINE POINT, MT
2011