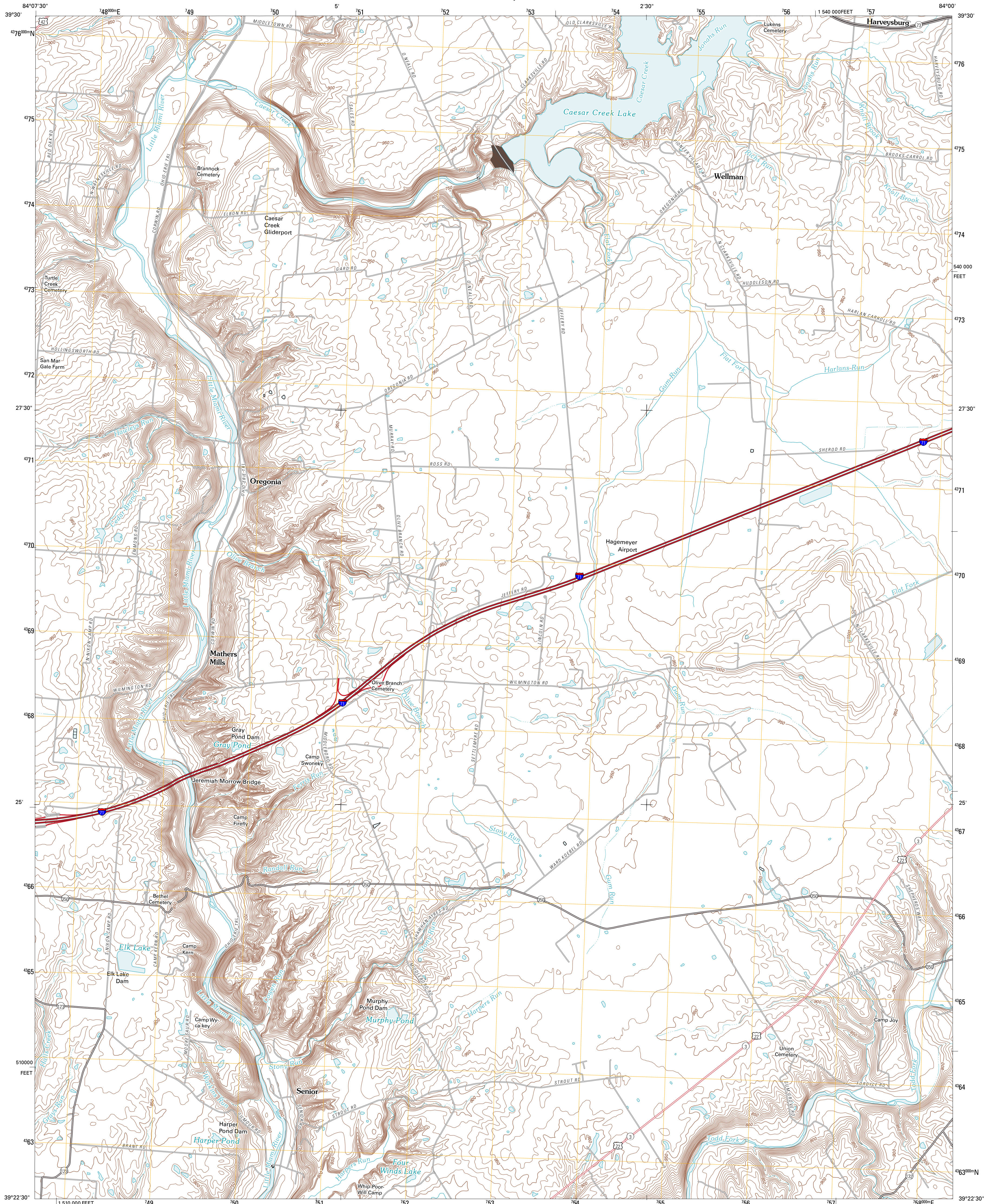




U.S. DEPARTMENT OF THE INTERIOR
U. S. GEOLOGICAL SURVEY

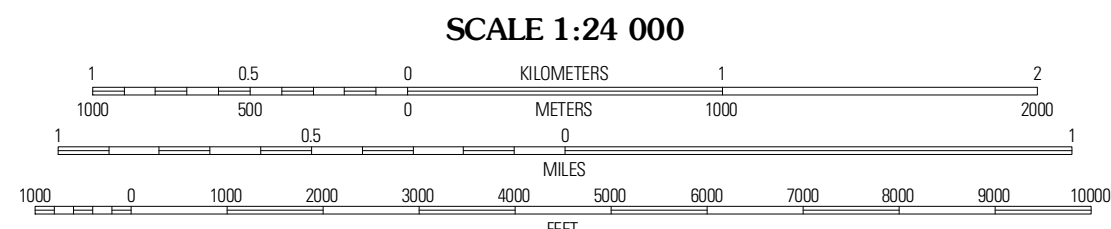
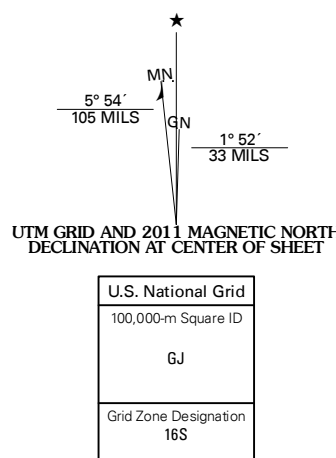


OREGONIA QUADRANGLE
OHIO
7.5-MINUTE SERIES



Produced by the United States Geological Survey
North American Datum of 1983 (NAD83)
World Geodetic System of 1984 (WGS84). Projection and
1 000-meter grid: Universal Transverse Mercator, Zone 16S
10 000-foot ticks: Ohio Coordinate System of 1983 (south
zone)

Imagery.....NAIP, May 2010 - June 2010
Roads.....©2006-2010 Tele Atlas
Names.....©2006-2010 Tele Atlas
Hydrography.....National Hydrography Dataset, 2010
Contours.....National Elevation Dataset, 2004



CONTOUR INTERVAL 10 FEET
NORTH AMERICAN VERTICAL DATUM OF 1988
This map was produced to conform with version 0.5.10 of the
draft USGS Standards for 7.5-Minute Quadrangle Maps.
A metadata file associated with this product is draft version 0.5.11



QUADRANGLE LOCATION		
Springboro	Waynesville	New Burlington
Lebanon	Oregonia	Clarksville
South Lebanon	Pleasant Plain	Blanchester

ROAD CLASSIFICATION		
Interstate Route	State Route	Local Road
US Route	US Route	4WD
Ramp	Interstate Route	State Route

OREGONIA, OH
2011