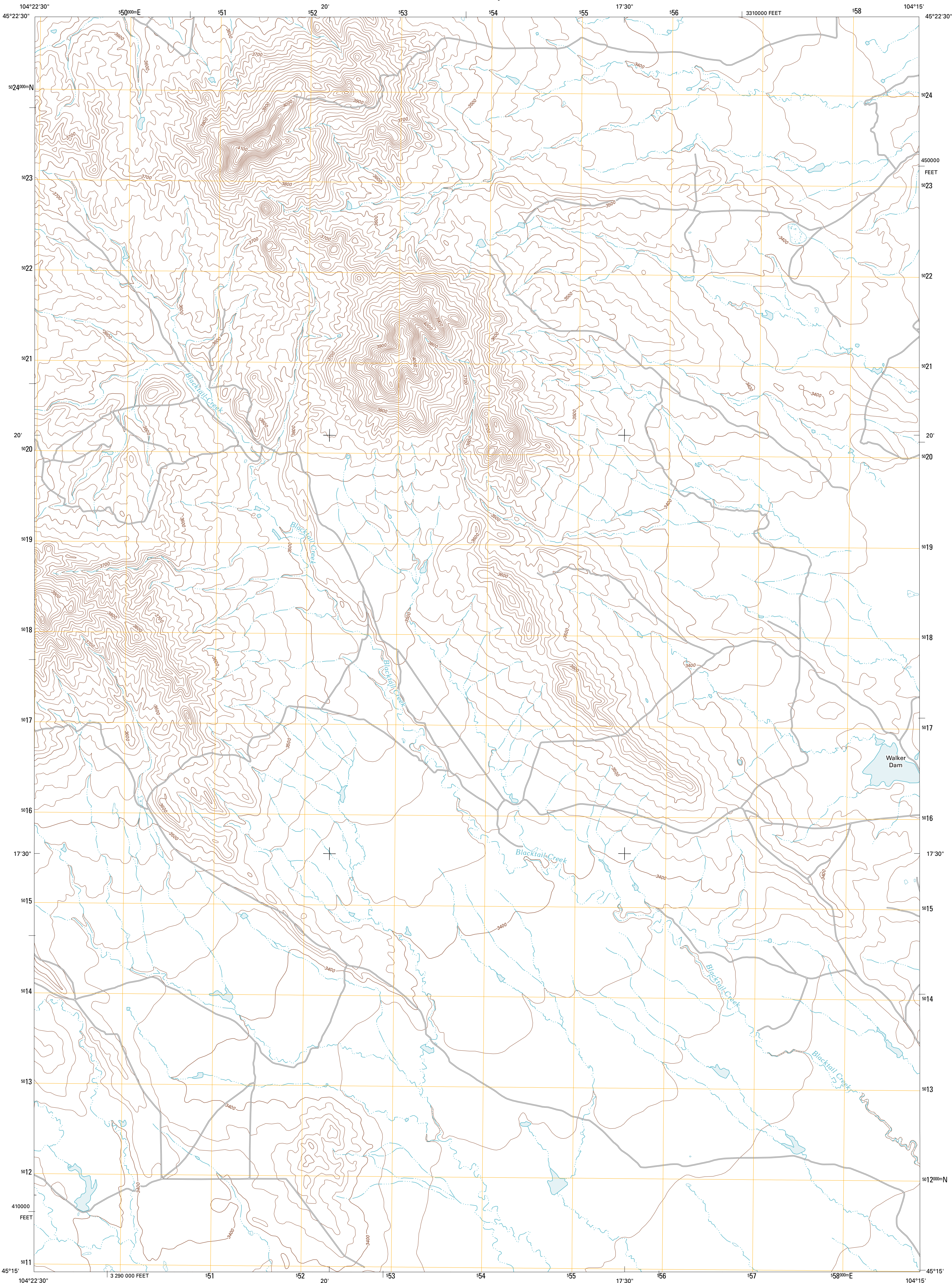




U.S. DEPARTMENT OF THE INTERIOR
U. S. GEOLOGICAL SURVEY

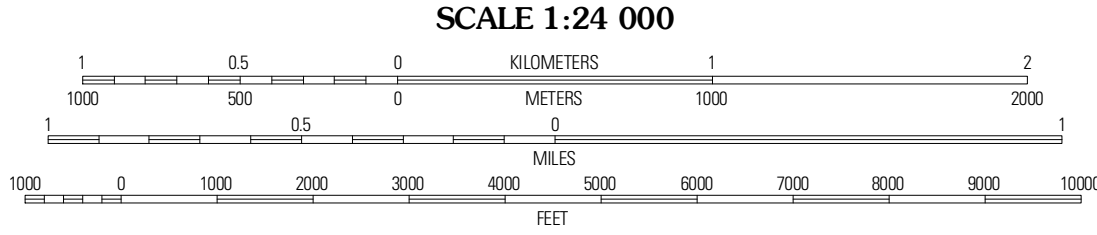
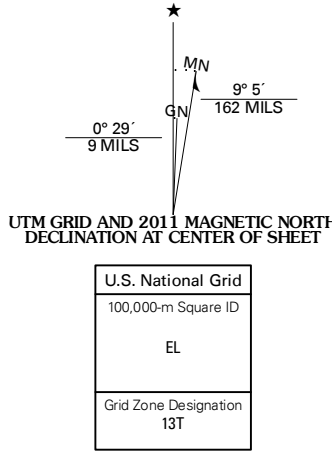


FINGER BUTTES EAST QUADRANGLE
MONTANA-CARTER CO.
7.5-MINUTE SERIES



Produced by the United States Geological Survey
North American Datum of 1983 (NAD83)
World Geodetic System of 1984 (WGS84). Projection and
1 000 meter grid: Universal Transverse Mercator, Zone 13T
10 000-foot ticks: Montana Coordinate System of 1983

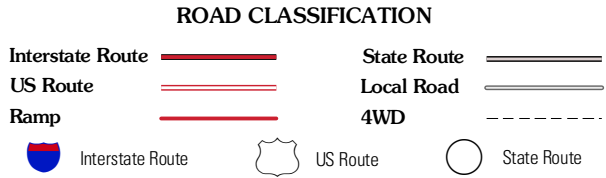
Imagery.....NAIP, July 2009
Roads.....©2006-2010 Tele Atlas
Names.....CNS, 2010
Hydrography.....National Hydrography Dataset, 2009
Contours.....National Elevation Dataset, 2009
Boundaries.....Census, IBWC, IBC, USGS, 1972 - 2010



CONTOUR INTERVAL 20 FEET
NORTH AMERICAN VERTICAL DATUM OF 1988
This map was produced to conform with version 0.5.10
of the USGS US Topo Product Standard.
A metadata file associated with this product is draft version 0.5.16



ADJOINING 7.5' QUADRANGLES		
Prairie Dog Creek	Lone Tree Creek	Capital NW
Finger Buttes West	Finger Buttes East	Cactus Creek West
Alzada NW	Albion	Elkhorn Creek West



FINGER BUTTES EAST, MT
2011