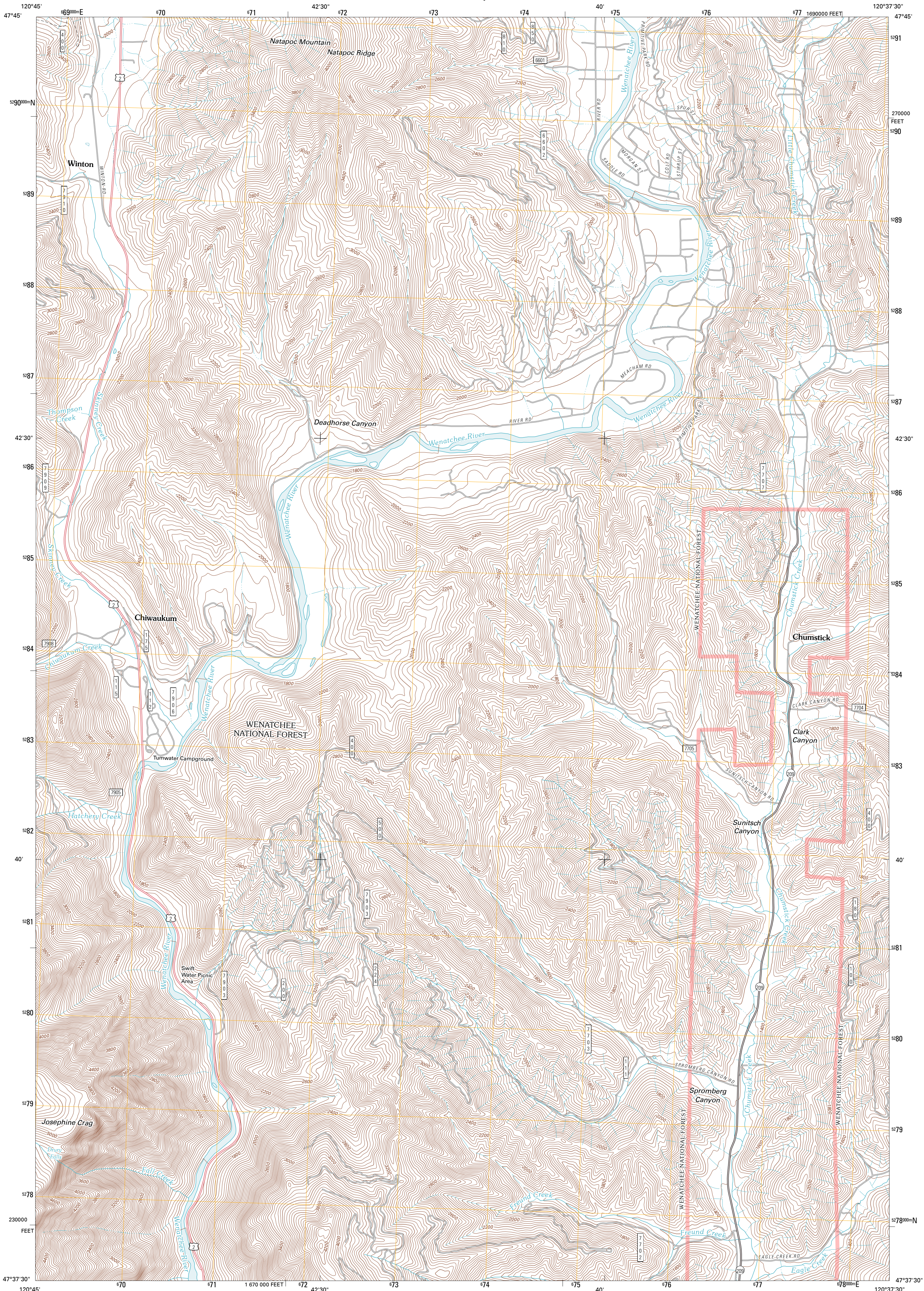




U.S. DEPARTMENT OF THE INTERIOR
U. S. GEOLOGICAL SURVEY

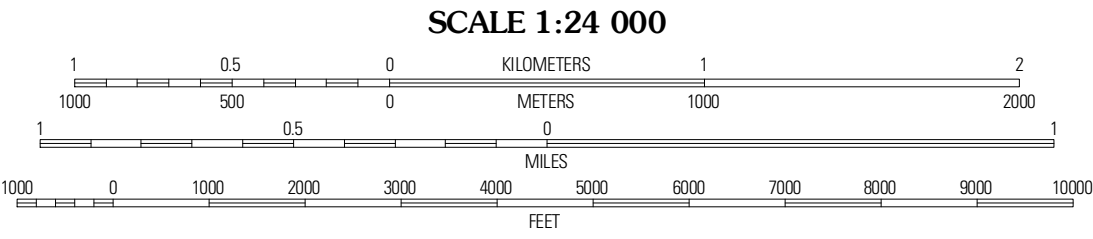
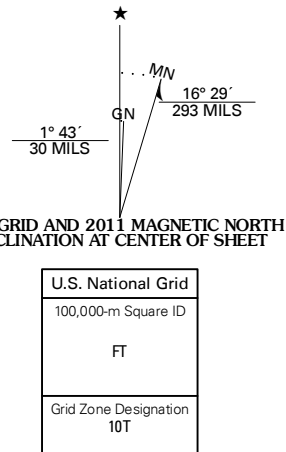


WINTON QUADRANGLE
WASHINGTON
7.5-MINUTE SERIES



Produced by the United States Geological Survey
North American Datum of 1983 (NAD83)
World Geodetic System of 1984 (WGS84). Projection and
1 000-meter grid: Universal Transverse Mercator, Zone 10T
10 000-foot ticks: Washington Coordinate System of 1983
(north zone)

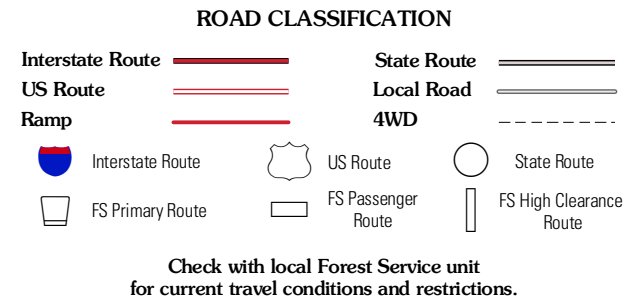
Imagery.....NAP, July 2009
Roads.....2006-2010 Tele Atlas
Roads within US Forest Service Lands.....FS Topo Data
with limited Forest Service updates, 2009
Names.....National Hydrography Dataset, 2010
Hydrography.....National Hydrography Dataset, 2009
Contours.....National Elevation Dataset, 1999



CONTOUR INTERVAL 40 FEET
NORTH AMERICAN VERTICAL DATUM OF 1988
This map was produced to conform with version 0.5.10 of the
draft USGS Standards for 7.5-Minute Quadrangle Maps.
A metadata file associated with this product is draft version 0.5.12



QUADRANGLE LOCATION		
Lake Wenatchee	Plain	Sugarloaf Peak
Big Jim Mountain	Winton	Van Creek
Cashmere Mountain	Leavenworth	Peshastin



Check with local Forest Service unit
for current travel conditions and restrictions.

WINTON, WA
2011

ADJOINING 7.5' QUADRANGLES