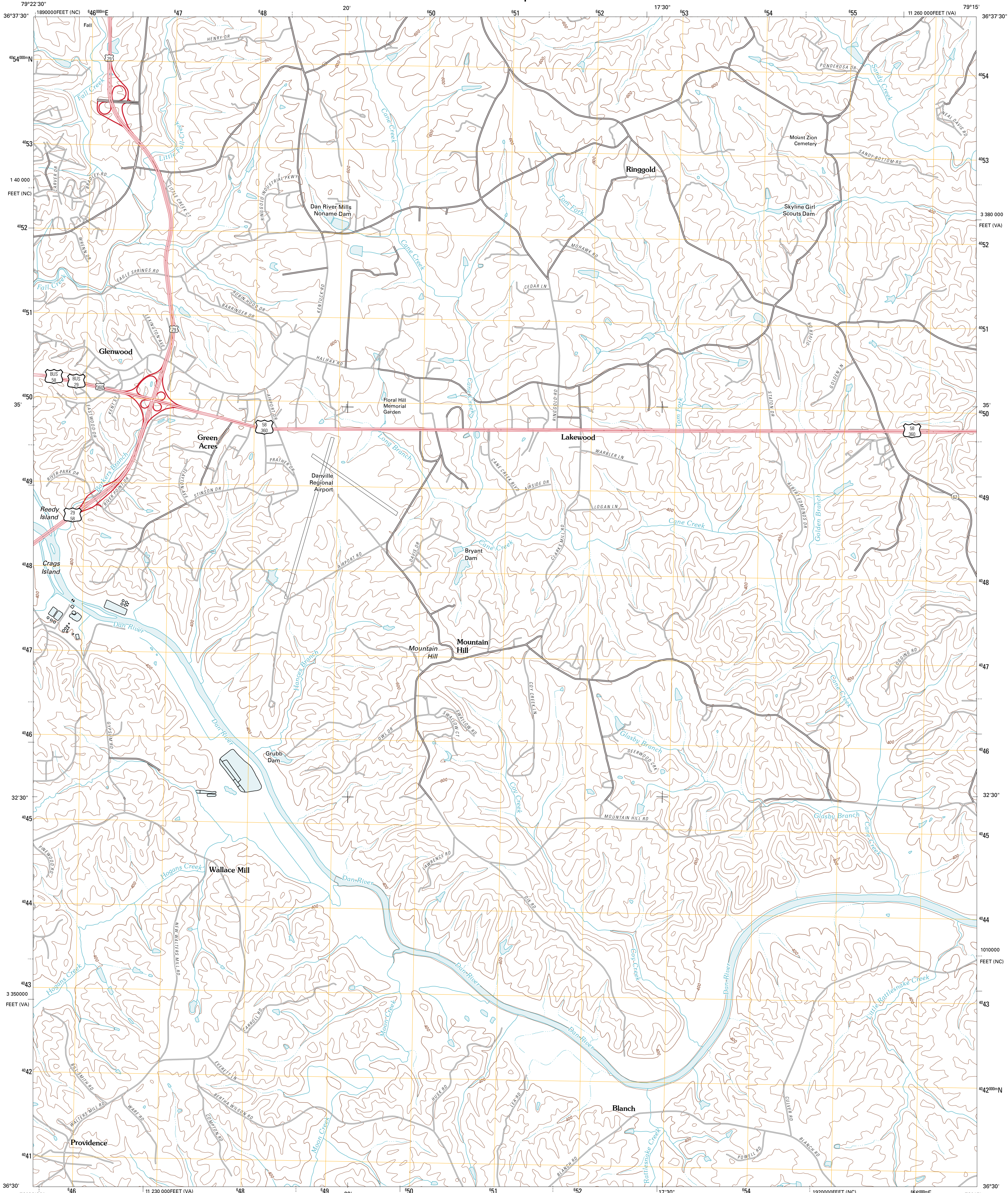




U.S. DEPARTMENT OF THE INTERIOR  
U. S. GEOLOGICAL SURVEY

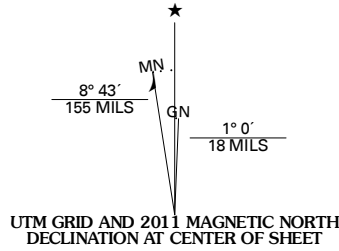


RINGGOLD QUADRANGLE  
VIRGINIA-NORTH CAROLINA  
7.5-MINUTE SERIES

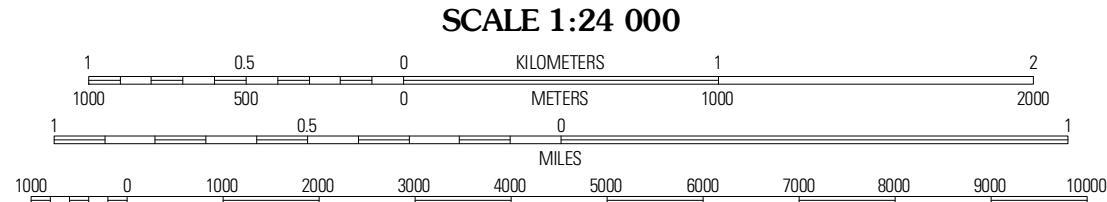


Produced by the United States Geological Survey  
North American Datum of 1983 (NAD83)  
World Geodetic System of 1984 (WGS84). Projection and  
1 000-meter grid: Universal Transverse Mercator, Zone 17S  
10 000-foot ticks: Virginia Coordinate System of 1983 (south  
zone), North Carolina Coordinate System of 1983

Imagery.....NAP, July 2009  
Roads.....©2006-2010 Tele Atlas  
Names.....GNIS, 2010  
Hydrography.....National Hydrography Dataset, 2009  
Contours.....National Elevation Dataset, 1999



U.S. National Grid
100,000-m Square ID
PA
Grid Zone Designation
17S



CONTOUR INTERVAL 40 FEET  
NORTH AMERICAN VERTICAL DATUM OF 1988  
This map was produced to conform with version 0.5.10 of the  
draft USGS Standards for 7.5-Minute Quadrangle Maps.  
A metadata file associated with this product is draft version 0.5.11



Mount Hermon	Blairs	Ingram
Danville	Ringgold	Milton
Park Spring	Yanceyville	Leansburg

ADJOINING 7.5' QUADRANGLES

ROAD CLASSIFICATION			
Interstate Route	State Route	Local Road	4WD
US Route			
Ramp			
Interstate Route	US Route	State Route	

RINGGOLD, VA-NC  
2011