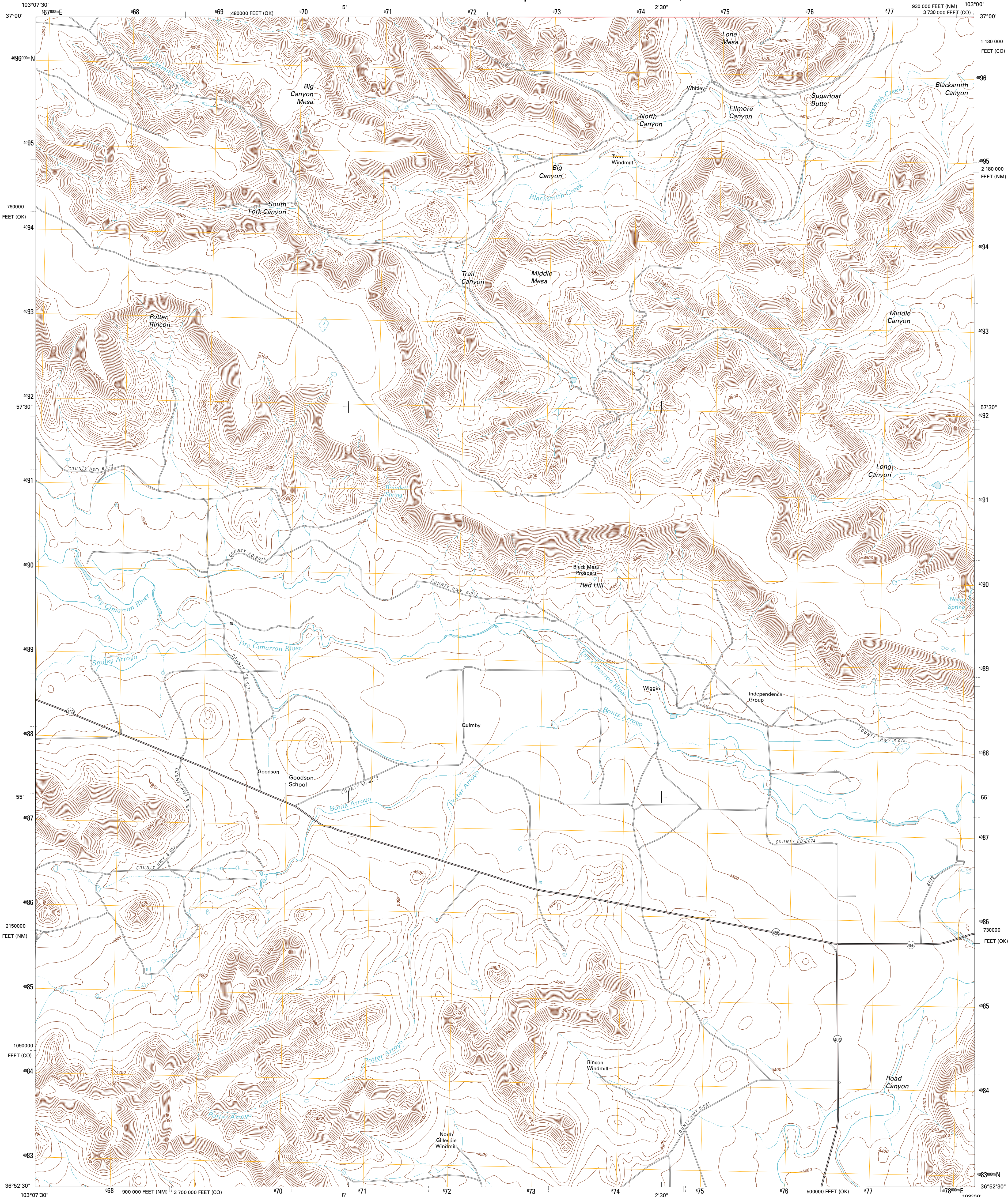




U.S. DEPARTMENT OF THE INTERIOR
U. S. GEOLOGICAL SURVEY



GOODSON SCHOOL QUADRANGLE
NEW MEXICO-OKLAHOMA-COLORADO
7.5-MINUTE SERIES

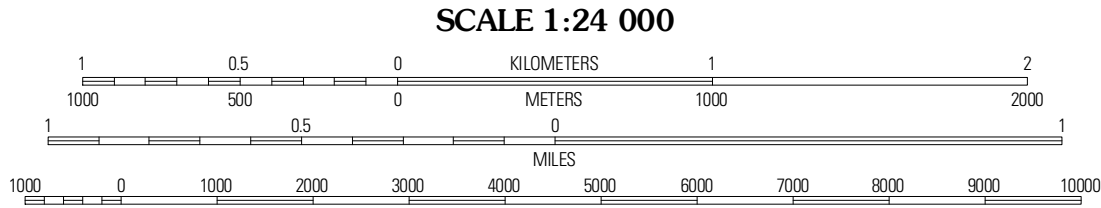


Produced by the United States Geological Survey
North American Datum of 1983 (NAD83)
World Geodetic System of 1984 (WGS84). Projection and
10 000-foot ticks: New Mexico Coordinate System of 1983
(east zone), Oklahoma Coordinate System of 1983 (north
zone), Colorado Coordinate System of 1983 (south zone)

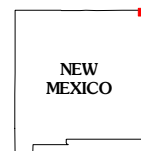
Imagery:.....NAIP, May 2009 - June 2009
Roads:.....©2006-2010 Tele Atlas
Roads within US Forest Service Lands:.....FS Topo Data
with limited Forest Service updates, 2009
Names:.....GNIS, 2010
Hydrography:.....National Hydrography Dataset, 2009
Contours:.....National Elevation Dataset, 2002

UTM GRID AND 2011 MAGNETIC NORTH
DECLINATION AT CENTER OF SHEET

U.S. National Grid
100,000m Square ID
FA
Grid Zone Designation
13S



CONTOUR INTERVAL 20 FEET
NORTH AMERICAN VERTICAL DATUM OF 1988
This map was produced to conform with version 0.5.10 of the
draft USGS Standards for 7.5-Minute Quadrangle Maps.
A metadata file associated with this product is draft version 0.5.12



Furnish Canyon West	Furnish Canyon East	Big Hole Canyon
Wedding Cake Butte	Goodson School	Kenton
Alamito	Greendulky Canyon	Kenton SW

ADJOINING 7.5' QUADRANGLES

ROAD CLASSIFICATION

Interstate Route	State Route
US Route	Local Road
Ramp	4WD

Interstate Route: US Route: Ramp: State Route: Local Road: 4WD:

Check with local Forest Service unit
for current travel conditions and restrictions.

GOODSON SCHOOL, NM-OK-CO
2011