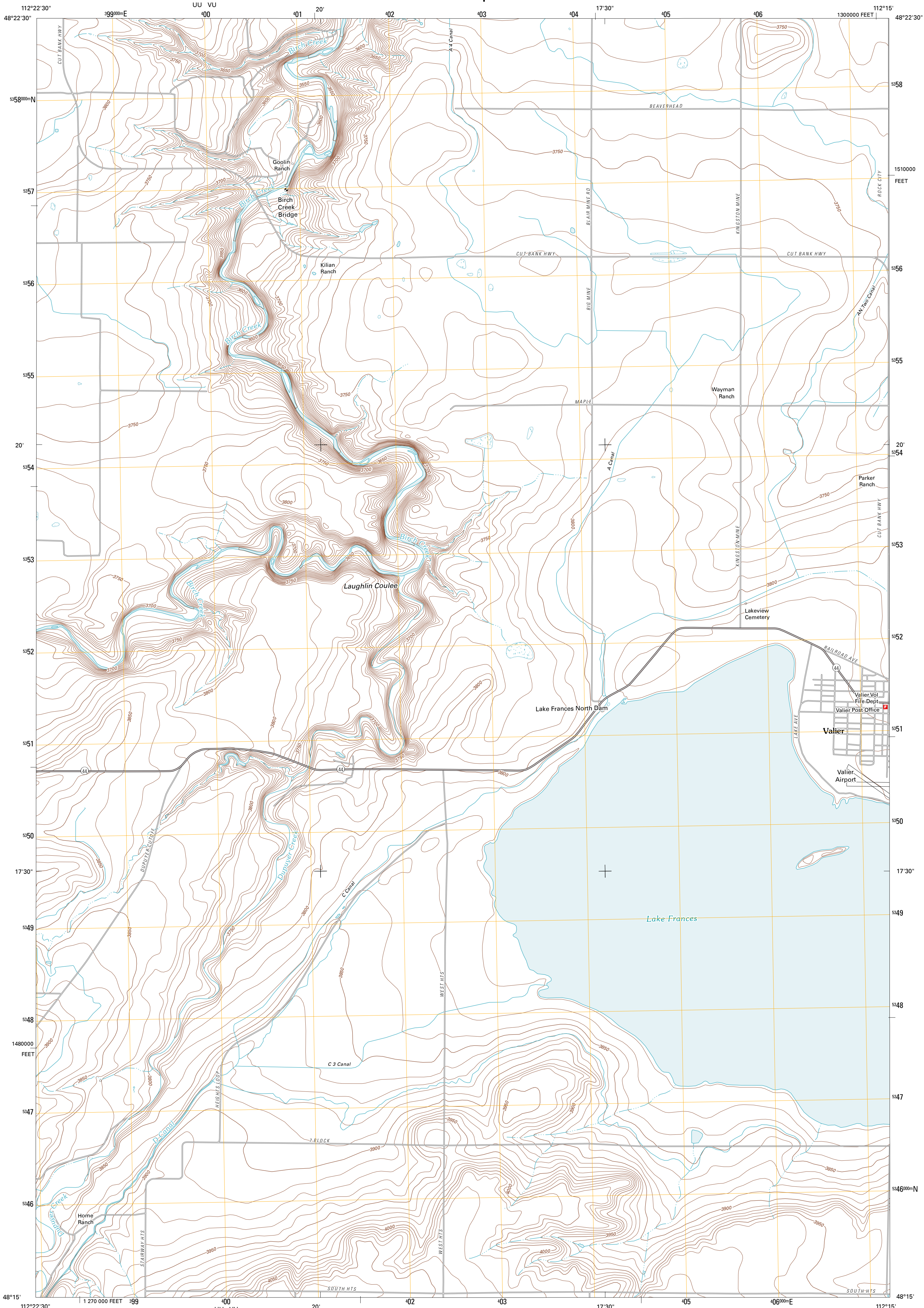




U.S. DEPARTMENT OF THE INTERIOR  
U. S. GEOLOGICAL SURVEY



VALIER WEST QUADRANGLE  
MONTANA-PONDERA CO.  
7.5-MINUTE SERIES

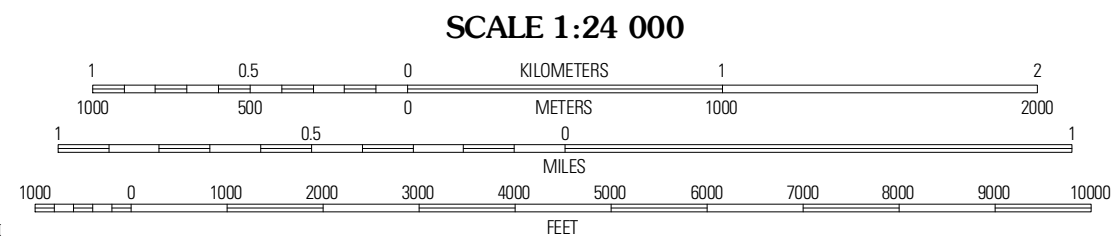


Produced by the United States Geological Survey  
North American Datum of 1983 (NAD83)  
World Geodetic System of 1984 (WGS84). Projection and  
1 000-meter grid: Universal Transverse Mercator, Zone 12U  
10 000-foot ticks: Montana Coordinate System of 1983

Imagery.....NAP, July 2009  
Roads.....©2006-2010 Tele Atlas  
Names.....GNIS, 2010  
Hydrography.....National Hydrography Dataset, 2009  
Contours.....National Elevation Dataset, 2008  
Boundaries.....Census, IBWC, IBWC, USGS, 1972 - 2010

UTM GRID AND 2011 MAGNETIC NORTH  
DECLINATION AT CENTER OF SHEET

|  |
|--|
| U.S. National Grid<br>100,000m Square ID<br>100<br>UU VU |
| Grid Zone Designation<br>12U                             |



CONTOUR INTERVAL 10 FEET  
NORTH AMERICAN VERTICAL DATUM OF 1988

This map was produced to conform with version 0.5.10  
of the USGS US Topo Product Standard.  
A metadata file associated with this product is draft version 0.5.16



|               |                      |                      |
|---------------|----------------------|----------------------|
| Flag Butte    | Rock City            | Albott Lake          |
| Kake Crossing | Valier West          | Valier East          |
| Depue East    | Lone Man Coulee West | Lone Man Coulee East |

ADJOINING 7.5 QUADRANGLES

| ROAD CLASSIFICATION |             |
|---------------------|-------------|
| Interstate Route    | State Route |
| US Route            | Local Road  |
| Ramp                | 4WD         |
| Interstate Route    | US Route    |
|                     | State Route |

VALIER WEST, MT  
2011