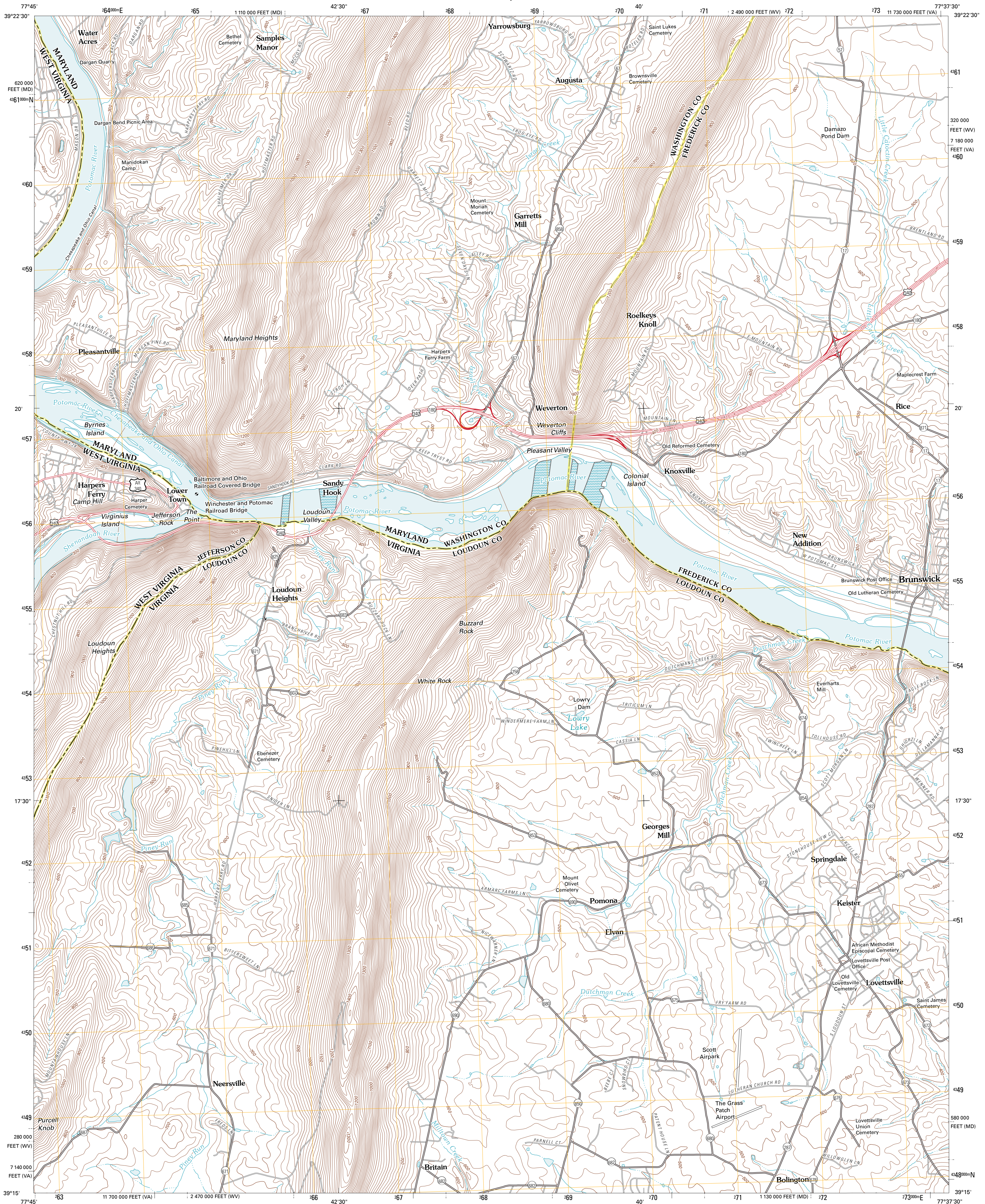




U.S. DEPARTMENT OF THE INTERIOR
U. S. GEOLOGICAL SURVEY

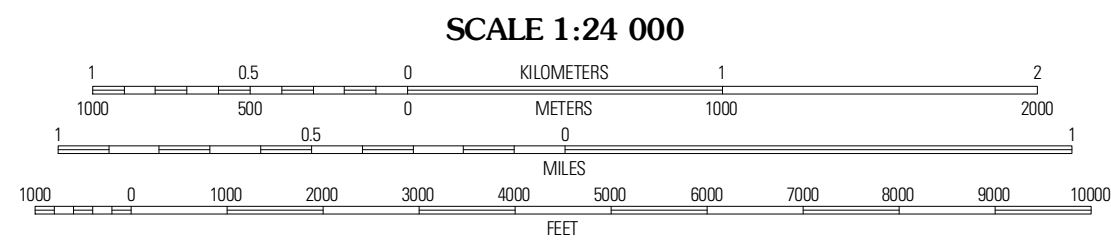
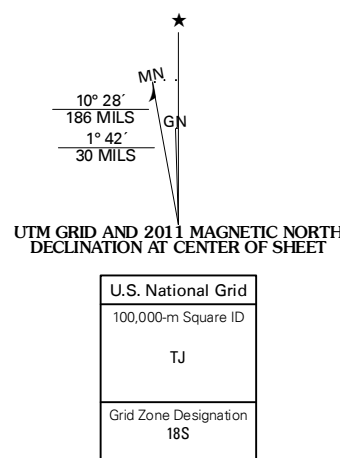


HARPERS FERRY QUADRANGLE
WEST VIRGINIA-VIRGINIA-MARYLAND
7.5-MINUTE SERIES

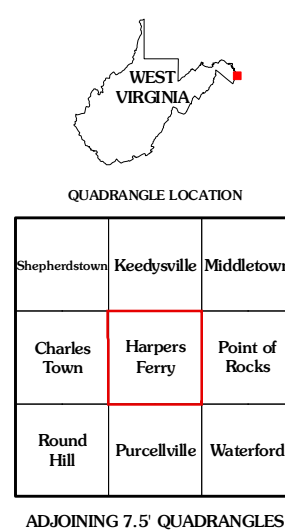


Produced by the United States Geological Survey
North American Datum of 1983 (NAD83)
World Geodetic System of 1984 (WGS84). Projection and
1 000-meter grid. Universal Transverse Mercator, Zone 18S
10 000-foot ticks. Virginia Coordinate System of 1983 (north
zone), Maryland Coordinate System of 1983, West Virginia
Coordinate System of 1983 (north zone)

Imagery.....NAIP, August 2009 - October 2009
Roads.....©2006-2010 Tele Atlas
Names.....GNS, 2010
Hydrography.....National Hydrography Dataset, 2009
Contours.....National Elevation Dataset, 2006
Boundaries.....Census, IBWC, IBC, USGS, 1972 - 2010



CONTOUR INTERVAL 20 FEET
NORTH AMERICAN VERTICAL DATUM OF 1988
This map was produced to conform with version 0.5.10
of the USGS US Topo Product Standard.
A metadata file associated with this product is draft version 0.5.15



ROAD CLASSIFICATION
Interstate Route
State Route
US Route
Local Road
Ramp
4WD
Interstate Route
US Route
State Route

HARPERS FERRY, WV-VA-MD
2011