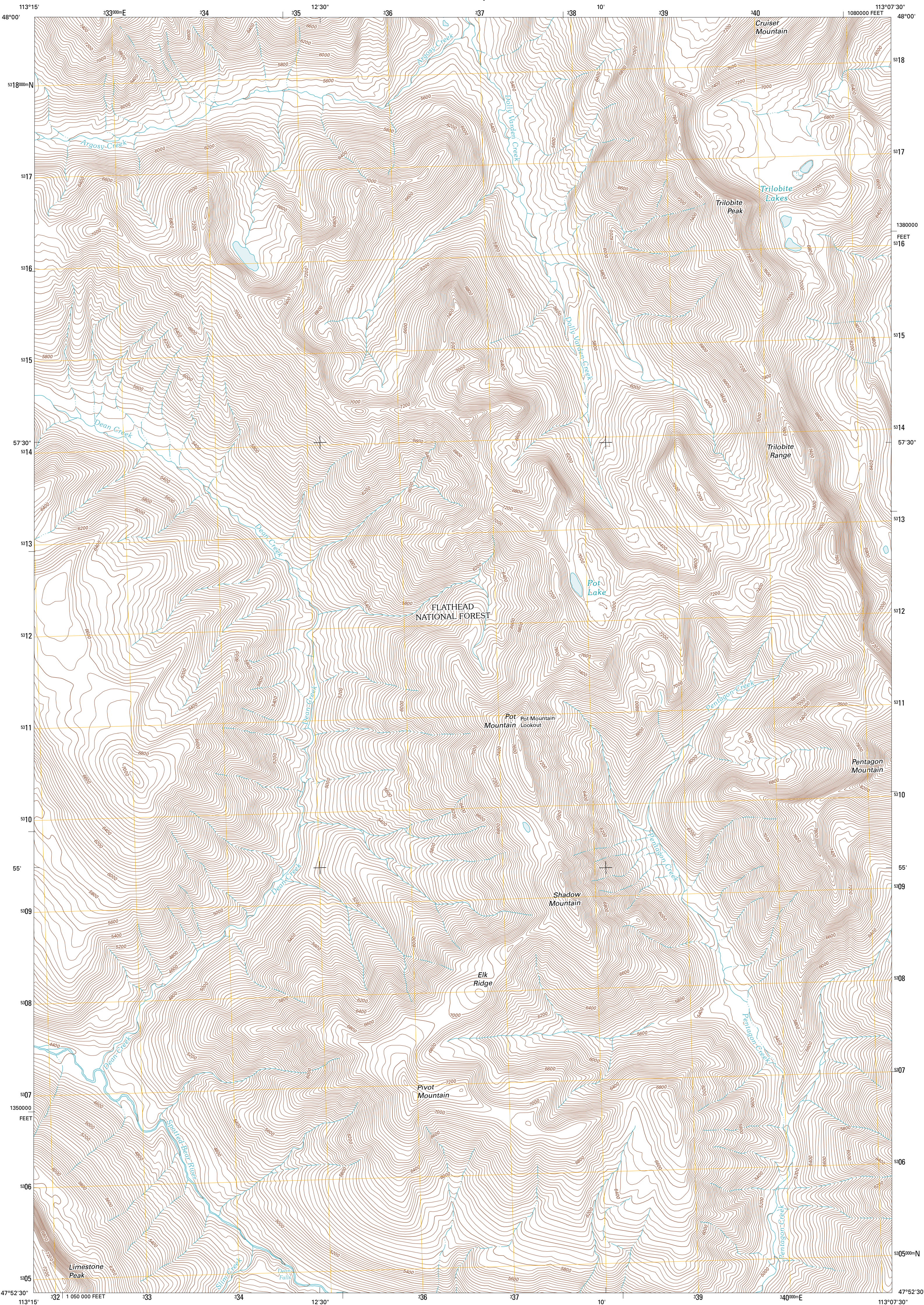




U.S. DEPARTMENT OF THE INTERIOR
U. S. GEOLOGICAL SURVEY

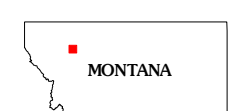
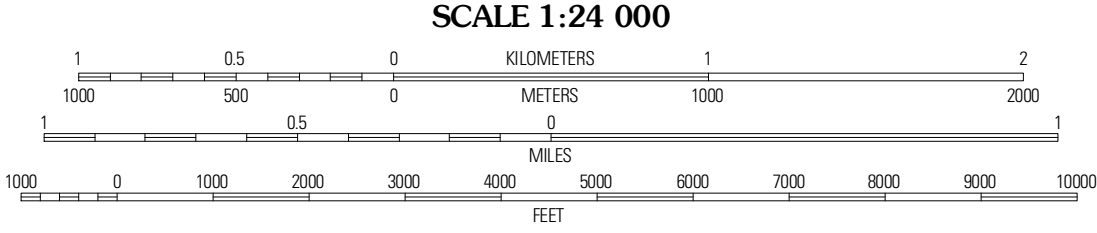
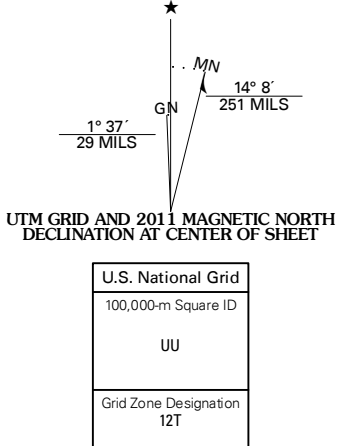


TRILOBITE PEAK QUADRANGLE
MONTANA-FLATHEAD CO.
7.5-MINUTE SERIES



Produced by the United States Geological Survey
North American Datum of 1983 (NAD83)
World Geodetic System of 1984 (WGS84). Projection and
1 000-meter grid: Universal Transverse Mercator, Zone 12T
10 000-foot ticks: Montana Coordinate System of 1983

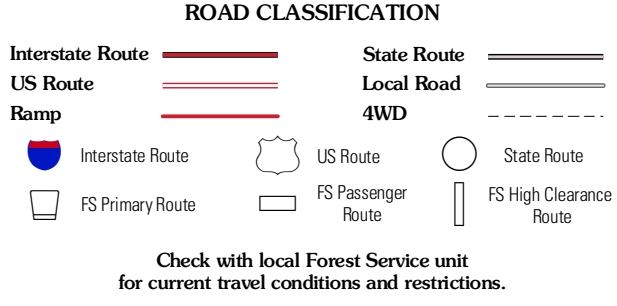
Imagery.....NAP, July 2009
Roads.....5/2006-2010 Tele Atlas
Roads within US Forest Service Lands.....FSTopo Data
with limited Forest Service updates, 2009
Names.....National Hydrography Dataset, 2010
Hydrography.....National Hydrography Dataset, 2009
Contours.....National Elevation Dataset, 2005
Boundaries.....Census, IBC, USGS, 1972 - 2010



QUADRANGLE LOCATION

Capital Mountain	Gable Peaks	Goodberry Park
Whitcomb Peak	Trilobite Peak	Pentagon Mountain
Cathedral Peak	Bungalow Mountain	Three Sisters

ADJOINING 7.5 QUADRANGLES



TRILOBITE PEAK, MT
2011